

**Lori Brenneke, Division Director (573) 751-6080**

Stacy Kempker, Executive Assistant

**Operations Director & OFABS  
(573) 526-0219**

Maddie Starnes, Chief  
Christine Knight, Lead Support

**Center for Local Public Health Services  
(573) 751-6170**

Tiffany Bayer, Director  
Jackie McCoy, Lead Support

**Maternal Child Health Leadership  
(573) 751-6435**

Martha Smith, Director  
Kyle Jenkins, Lead Support

**Melinda Laughlin, Deputy Director (573) 751-6080**

**Jonathan Garoutte,  
Assistant Deputy  
(573) 751-6080**

Dawn Wall, Disease  
Control and Environmental  
Operations Manager

**Bureau of Communicable  
Disease Control and  
Prevention (CDCP)  
(573) 751-6268**

John Bos, Chief  
Sandy Betros, Lead  
Support

**Bureau of Environmental  
Epidemiology (BEE)  
(573) 526-4911**

Jeff Wenzel, Chief  
Cynthia Brown, Lead  
Support

**Bureau of Environmental  
Health Services (BEHS)  
(573) 751-2483**

Dusty Johnson, Chief  
Charlene Smith, Lead  
Support

**Healthcare Associated  
Infections/Antimicrobial  
Resistance Program  
(HAI/AR)  
(573) 751-6268**

Amy Pierce, Coordinator  
Sandy Betros, Lead  
Support

**Venkata Garikapaty,  
Assistant Deputy  
(573) 522-2808**

**Bureau of Health  
Care Analysis and  
Data Dissemination  
(BHCADD)  
(573) 522-2808**

Andrew Hunter, Chief  
Tara Snellen, Lead  
Support

**Bureau of Data  
Modernization &  
Interoperability  
(BDMI)  
(573) 522-2808**

Zach Kempf, Chief  
Tara Snellen, Lead  
Support

**Office of  
Epidemiology (OOE)  
(573) 751-6272**

Vacant, Chief  
Kelsi Kimbrel, Lead  
Support

**Alicia Jenkins, Deputy Director (573) 522-2806**

**Vacant, Assistant  
Deputy  
(573) 751-6475**

**Office of Minority  
Health and Health  
Equity (OMHHE)  
800-877-3180**

Angel Surdin, Chief  
Mark Hernandez, Lead  
Support

**Bureau of HIV, STI and  
Hepatitis (HSH)  
(573) 751-6475**

Dustin Hampton, Chief  
Renee Luebbering,  
Lead Support

**Bureau of  
Community Food  
and Nutrition  
Assistance (CFNA)  
(573) 751-6269**

Sarah Walker, Chief  
Larissa Wehmeir,  
Lead Support

**Bureau of WIC and  
Nutrition Services  
(WICNS)  
(573) 751-6265**

Angie Oesterly,  
Chief  
Dora Crawford, Lead  
Support

**Pat Simmons, Assistant  
Deputy  
(573) 522-2806**

**Bureau of Cancer and  
Chronic Disease Control  
(CCDC) (573) 522-2806**

Sandy Hentges, Chief  
Angela Hammen, Lead Support

**Bureau of Community Health  
and Wellness (CHW)  
(573) 522-2820**

Valerie Howard Chief  
Susan Demsko, Lead Support

**Bureau of Genetics and  
Healthy Childhood (GHC)  
(573) 751-6266**

Jami Kiesling, Chief  
Dee Distler, Lead Support

**Office of Dental Health (ODH)  
(573) 751-5874**

Dr. Jacqueline Miller, Director  
Dione Snitker, Lead Support

**Office of Rural Health and  
Primary Care (ORHPC)  
(573) 751-6441**

Vacant, Chief  
Rain Davis, Lead Support

**Office on Women's Health  
(OWH) (573) 522-2806**

Sarah Ehrhard Reid, Chief  
Angela Hammen, Lead Support

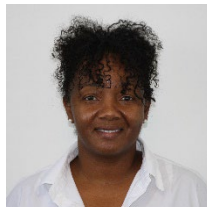
**Lori Brenneke, Division Director**



**Mindy Laughlin, Deputy Division Director**



**Alicia Jenkins, Deputy Division Director**



**Jonathan Garoutte, Assistant Deputy**



**Venkata Garikapaty, Assistant Deputy**



**Pat Simmons, Assistant Deputy**



**Vacant, Assistant Deputy**

**Dr. George Turabelidze, State Epidemiologist**



**Stacy Kempker, Executive Assistant**



**Christine Knight, Operations Assistant**



**Division Operations Unit**

**Maddie Starnes, Chief**

**Office of Financial and Budget Services**

Purchasing

Payment Processing

Timekeeping (DELTA) Oversight

Training on Fiscal Management Leadership and Oversight of fiscal management systems



**DCPH Special Projects Unit**

Continuity of Operations

Fiscal Estimates for Legislation (Fiscal Notes)

Preparation of Annual State Budget Request

Legislative Proposals



**Public Health Information Network (PHIN)**

Collaborates with stakeholders to develop interoperability connections

Ensure IT project completion

**Maternal Child Health Leadership**

**Martha Smith**

Family & Community Engagement & Partnership

Fetal and Infant Mortality Review (FIMR)

Health, CYSHCN, & Cross-cutting MCH

Leadership & Oversight of Overarching State MCH Efforts, Programming and Initiatives

Maternal Mortality Prevention Plan (MMPP)

Medical Home

MCH Learning Community

MCH Needs Assessment

MCH State Action Planning: Women & Maternal Health, Perinatal & Infant Health, Child Health, Adolescent, CYSHCN and Cross-cutting MCH

MCH Systems

MCH Workforce

MO Maternal Health Action Network

MO MCH Alliance

MO Title V MCH Services Block Grant Program

Public Health Nursing (DHSS Liaison with MPHA Section for Public Health Nursing)

State Adolescent Health Leader & Youth Voices



## **Disease Control and Environmental Operations Manager**

**[Dawn Wall](#)**



## **Healthcare Associated Infections/Antimicrobial Resistance Program (HAI/AR) (573) 751-6268**

**[Amy Pierce](#), Coordinator**

Antimicrobial Stewardship

Infection Prevention and Response

Infection Control Breaches and Outbreaks

Multi-drug resistant organisms



## **Center for Local Public Health Services (CLPHS) (573) 751-6170**

**[Tiffany Bayer](#), Director**

CHIP H.S.I.

Core Participation Agreements

New LPHA Administrator and Board of

Health Administrator Orientation

PHIG Grant

Technical Assistance and Linkage for LPHAs



## **Office of Dental Health (ODH) (573) 751-5874**

**[Dr. Jacqueline Miller](#), State Dental Director**

Community Water Fluoridation – Education, Training & Support

Dental Health Education

Dental Health Workforce Issues

Elks Mobile Dental and Donated Dental Program

Improving Oral Health Outcomes

Schools Preventive Services Program and Dental

Sealant Program for MO Children

Teledentistry



## **Office of Epidemiology (OOE) (573) 751-6272**

**Vacant, Chief**

Epidemiology Teams:

- Chronic Disease
- Maternal Child Health
- Communicable Disease
- Cancer and Infrastructure

Surveillance Systems:

- Behavioral Risk Factor Surveillance System (BRFSS)
- County Level Study (CLS)
- Missouri Cancer Registry (MCR)
- National Violent Death Reporting System (NVDRS)
- Pregnancy Risk Assessment Monitoring System (PRAMS)

- Youth Risk Behavior Surveillance System (YRBS)

Surveillance and Reporting of:

- HIV, STDs and TB
- Maternal Mortality / Morbidity
- Other Communicable Diseases
- Vaccine Preventable Diseases
- Zoonotic Diseases

**Office of Minority Health and Health Equity (OMHHE) 800-877-3180**

**Angel Surdin, Chief**

Minority Infant Mortality Prevention Initiative  
Obesity Prevention  
Promoting Healthy Minority Communities



**Office of Rural Health and Primary Care (573) 751-6441**

**Vacant, Chief**

Community-Based Faculty Preceptor Tax Credit Program  
Delta Region Community Health Systems Development Program  
Health Professional Loan Repayment Program (HPLRP)  
Health Professional Shortage Areas (HPSAs) and Provider Management  
J-1 Visa and National Interest Waivers  
Missouri Graduate Medical Education (GME) Grant Program  
Missouri Health Professional Placement Services (MHPPS) Program  
Medicare Rural Hospital Flexibility Program  
Rural Health Care Provider Transition Project  
Rural Health Promotion and Blog  
Rural Primary Care Physician Grant Program  
Rural Recruitment and Retention Programs (3RNET)  
Small Rural Hospital Improvement Program  
State Office of Primary Care  
State Office of Rural Health  
Student Loan Repayment Program (SLRP)

**Office on Women's Health (573) 522-2806**

**Sarah Ehrhard Reid, Chief**

Baby and Me Tobacco Free Program-Telehealth  
Cora Faith Walker Doula Training Program  
Doula Services of Springfield  
Extended Women's Health Services  
Maternal Autopsy Reimbursement  
Maternal Mortality / PAMR / Perinatal Quality Collaborative  
Maternal Neonatal Levels of Care  
Pregnancy Assistance Information  
Prenatal Care Clinic in Kansas City  
Sexual Assault Forensic Exams via Telehealth Statewide Network (SAFE-T Network)  
Sexual Violence Prevention  
Women's Health Council  
Women's Health Initiatives





**Bureau of Cancer and Chronic Disease Control (CCDC) (573) 522-2806**

**Sandy Hentges, Chief**

ALS

Alzheimer's Prevention

Arthritis and Osteoporosis

Asthma Prevention and Control

Comprehensive Cancer Control

Diabetes Prevention and Control

Heart Disease

Organ Donor Program

Show-Me Healthy Women (Breast and Cervical Cancer Control)

WISEWOMAN



**Bureau of Communicable Disease Control and Prevention (CDCP) (573) 751-6268**

**John Bos, Chief**

Communicable Disease Investigation and Control

Tuberculosis Elimination Program

Zoonotic Diseases Program



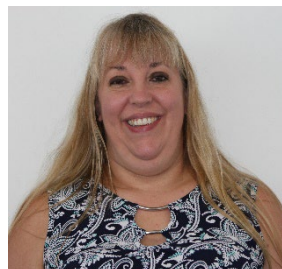
**Bureau of Community Food and Nutrition Assistance (CFNA) (573) 751-6269**

**Sarah Walker, Chief**

Child & Adult Care Food Program (CACFP)

Commodity Supplemental Food Program (CSFP)

Summer Food Service Program (SFSP)



**Bureau of Community Health and Wellness (CHW) (573) 522-2820**

**Valerie Howard, Chief**

Adolescent and School Health Program

- Personal Responsibility Education Program
- Positive Youth Development
- Sexual Risk Avoidance
- Tate School Nurse Consultant

Building Communities for Better Health

Injury and Overdose Prevention and Response

- OD2A
- MO-CORP
- Cannabis grant program
- Harm Reduction
- Safe Kids Coalition

MCH Services Program

Missouri Tobacco Prevention and Control Program

Physical Activity and Nutrition Program

Worksite Wellness



**Bureau of Data Modernization & Interoperability (DMI) (573) 522-2808**

**Zach Kempf, Chief**

Data Governancy / Infrastructure  
Data Systems Enhancements / Upgrades  
Develop interoperability within DCPH Systems  
Electronic Case Reporting  
Electronic Lab Reporting  
EpiTrax  
Immunization Information Systems  
Monitoring Reporting Compliance  
Show MeVax  
ShowMe WorldCare  
WebSurv



**Bureau of Environmental Epidemiology (BEE) (573) 526-4911**

**Jeff Wenzel, Chief**

Environmental Surveillance  
Environmental Public Health Tracking (EPHT)  
Health and Risk Assessment Program (HRAP)  
Healthy Indoor Environments

- Childhood Lead Poisoning Prevention Program (CLPPP)

Healthy Drinking Water Unit

- Get the Lead out of Schools (GLOS)
- Private Drinking Water program

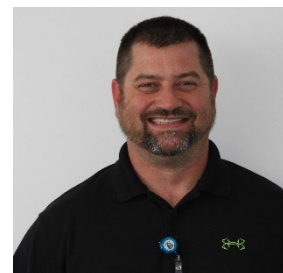
Lead Licensing Program  
Wastewater Surveillance Program



**Bureau of Environmental Health Services (BEHS) (573) 751-2483**

**Dusty Johnson, Chief**

Emergency Response to Natural Disasters and Emergency Situations  
Environmental Child Care Sanitation Inspections  
Environmental Investigations for Communicable Diseases  
Legionella Control and Prevention Assessments  
Lodging Licensing and Health/Safety Inspections  
Manufactured Food Facility Safety Inspections  
On-Site Waste Water Treatment Training and Evaluations  
Retail Food Safety Training and Inspections



**Bureau of Genetics and Healthy Childhood (GHC) (573) 751-6266**

**Jami Kiesling, Chief**

Adult Genetics (Cystic Fibrosis, Hemophilia, and Sickle Cell Anemia)  
Genetic Services  
Metabolic Formula Distribution  
Newborn Health  
Newborn Hearing Screening  
Newborn Blood Spot Screening  
Prenatal Hepatitis B Prevention and Case Management  
Prenatal Substance Use Prevention  
Sexual Assault Forensic Examination and Child Abuse Resource and Education (SAFE-CARE)  
Sickle Cell Anemia  
SIDS Autopsy Reimbursement  
TEL-LINK



**Bureau of Health Care Analysis and Data Dissemination (BHCADD) (573) 522-2808**

**Andrew Hunter, Chief**

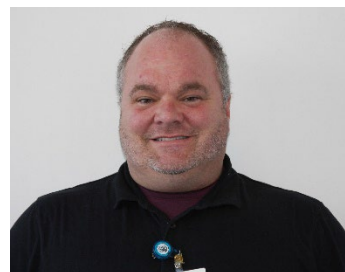
Birth Defects Surveillance  
Drug Overdose Surveillance  
Healthcare-Associated Infection Reporting  
Inpatient and Outpatient Data  
MOPHIMS (MICA and Community Data Profiles)  
Syndromic Surveillance (ESSENCE)  
Vital Statistics (Birth, Death, Marriage, Abortion)



**Bureau of HIV, STI and Hepatitis (BHSB) (573) 751-6475**

**Dustin Hampton, Chief**

AIDS Drug Assistance Program (ADAP)  
Ending the HIV Epidemic Initiatives (EHE) – Consider listing as “EHE Initiatives”  
Hepatitis C Prevention, Testing and Health Education  
HIV/STD Screening, Testing and Prevention Services  
Housing Opportunities for Persons with AIDS (HOPWA) Program – Consider listing as “HOPWA Program”  
Medicaid AIDS Waiver  
Pre-exposure Prophylaxis (PrEP) Coordination – Consider listing as “PrEP Coordination”  
Ryan White HIV Case Management



**Bureau of Immunizations (BI) (573) 751-6124**

**Lynelle Paro, Chief**

Immunizations / Vaccines  
Immunizations Quality Improvement for Providers (IQIP)  
School & Child Care Survey Reporting  
Section 317 Vaccine  
ShowMeVax (Immunization Registry)  
Vaccines for Children



**Bureau of Vital Records (BVR) (573) 526-0348**

**Dylan Bryant, Chief & State Registrar**

Adoptions  
Births  
Deaths  
Delayed Births  
Dissolutions of Marriage  
Foreign Born Adoptions  
Induced Termination of Pregnancies (ITOPs)  
Legitimations  
Applications/Reports of Marriage  
Missouri Adoptee Rights Act (Pre-Adoptive Requests)  
Paternity Affidavits  
Presumptive Deaths  
Putative Father Registry  
Reports of Fetal Death  
Statements of Single Status  
Surrogacies





**Bureau of WIC and Nutrition Services (WICNS) (573) 751-6265**

**[Angie Oesterly](#), Chief**

Breastfeeding Peer Counseling

Breastfeeding Program

Supplemental Nutrition Program for

Women, Infants and Children (WIC)

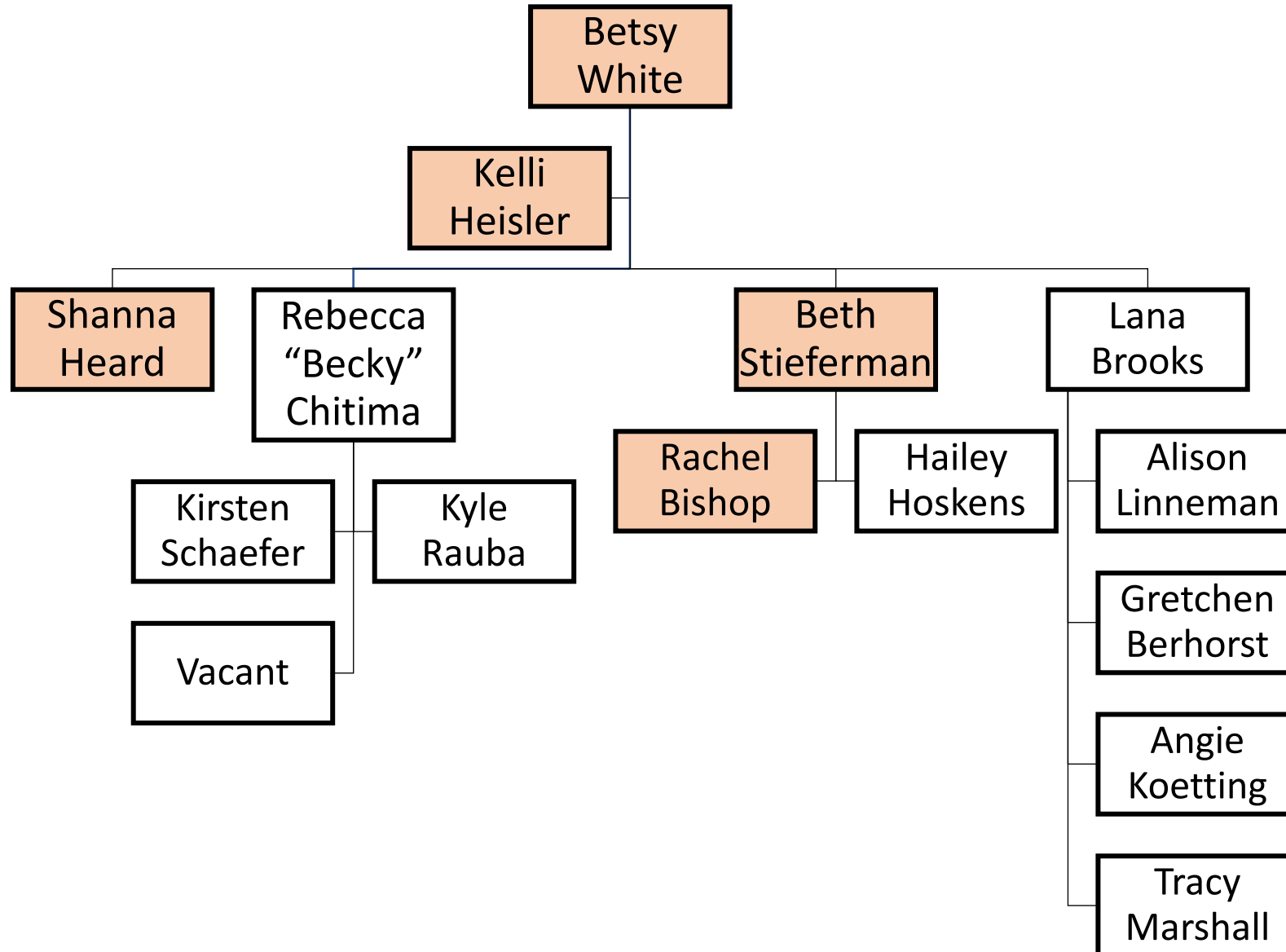


# Division of Senior and Disability Services (DSDS)

Updated July 2023

<div>DSDS DIRECTOR'S OFFICE</div> <div>MELANIE HIGHLAND: DIRECTOR</div> <div>JAKE LUEBBERING: DEPUTY DIRECTOR</div> <div>KIM TOEBBEN: DEPUTY DIRECTOR</div> <div>KIM GILBERT EXECUTIVE ASSISTANT</div> <div>573.526.3626</div>	<div>OFFICE OF CONSTITUENT &amp; EMERGENCY SERVICES (OCES)</div> <div>WENDY BRUEMMER: MANAGER 573.526.3625</div> <div><ul style="list-style-type: none"><li>Constituent Services for the Division</li><li>Legislative &amp; Media Contact Liaison</li><li>Continuity of Operations (COOP)</li><li>Emergency Preparedness/Response Coordination &amp; Training for staff, external partners and AAA's</li><li>Promotional Activities and Initiatives (OAM, WEAAD, Caregiver of the Year)</li><li>Public Education and Outreach (Website, publications, presentations) Design, Coordination and Tracking</li><li>MO Silver Haired Legislature (SHL)</li><li>Senior Day at the State Fair</li><li>Show-Me State Games Volunteers</li><li>MO State Employee Charitable Campaign (MSECC)</li></ul></div>	<div>OFFICE OF ORGANIZATIONAL ADVANCEMENT</div> <div>JOSEPH SALTER: 573.526.2075</div> <div>TERRY BLACK: 573.526.8574</div> <div><ul style="list-style-type: none"><li>Statewide CQI</li><li>Team Member Engagement</li><li>Initiatives</li><li>Telecommuting</li><li>DSDS Heroes at Work</li></ul></div> <div>DSDS Business Systems Director</div> <div>TRAVIS WEST: 573.522.1214</div>	<div>BUREAU OF SENIOR PROGRAMS (BSP)</div> <div>MINDY ULSTAD: CHIEF 573.526.4542</div> <div><ul style="list-style-type: none"><li>Alzheimer Services</li><li>Area Agencies on Aging including: Congregate Meals, Family Caregiver, Home Delivered Meals, Home Modifications, Homemaker Services, Information and Assistance, Medicare Part D Sign-up, Personal Care, Respite, Senior Nutrition, State Plan, Transportation</li><li>Disease and falls Prevention &amp; Wellness Promotion</li><li>Grant Development and Oversight</li><li>Legal Services Developer, including Senior Legal Helpline</li><li>Senior Independent Living Programs (SILP) Formerly NORC's</li><li>Senior Community Service</li><li>Employment Program</li><li>Senior Immigrants &amp; Refugees</li></ul></div>	<div>OFFICE OF THE LONG-TERM CARE OMBUDSMAN (LTCO)</div> <div>JENNY HOLLANDSWORTH: STATE OMBUDSMAN 573.526.0727</div> <div><ul style="list-style-type: none"><li>Advocate for Residents' Rights</li><li>Assist with questions and complaints from residents and their families regarding "Rights Issues"</li><li>Coordinate with the ten regional Ombudsman offices comprised of staff and volunteers</li><li>Trainings and Presentations regarding topics related to Long-Term Care Facility issues</li></ul></div>	<div>FINANCIAL SERVICES UNIT (FSU)</div> <div>SHYRA DOUGHERTY: CHIEF 573.522.9037</div> <div><ul style="list-style-type: none"><li>Accounts Payable</li><li>Budget</li><li>Employee Expense Accounts</li><li>Financial Issues</li><li>Fiscal Notes</li><li>Grant Oversight</li><li>Legislative Oversight</li><li>Payments (DH-59's)</li><li>Purchasing</li><li>RTF's, COA's and Salary Justifications</li><li>Time accounting</li><li>Fixed Asset Tracking</li></ul></div>						
<div>SECTION FOR ADULT PROTECTIVE SERVICES (APS)</div> <div>TIM JACKSON: SECTION ADMINISTRATOR</div> <div>SARA AVERY: LEAD SUPPORT</div> <div>573.472.6695</div>	<div>CENTRAL REGISTRY UNIT (CRU)</div> <div>ADULT ABUSE, NEGLECT AND FINANCIAL EXPLOITATION HOTLINE: 800.392.0210</div> <div>ONLINE REPORT SUBMISSIONS 24/7: <a href="https://health.mo.gov/safety/abuse">HTTPS://HEALTH.MO.GOV/SAFETY/ABUSE</a></div> <div>Register reports alleging abuse, neglect, bullying and financial exploitation of eligible adults (adults with disabilities age 18 to 59 and seniors age 60 and over) in home and community based settings or residing in or receiving services from: DHSS Licensed Long-Term Care Facilities; Home Health Agencies; Hospice Agencies and Hospitals; Medicaid-funded In-Home Service providers and Consumer Directed Service (CDS) vendors; Missouri Medicaid Audit and Compliance (MMAC); Missouri Department of Mental Health; Missouri Veteran's Homes and VA Hospitals</div> <div><ul style="list-style-type: none"><li>Register Shared Care Tax credit Participants</li></ul></div>		<div>BUREAU OF ADULT PROTECTIVE SERVICES &amp; SUPPORTS (APSS)</div> <div>NICOLE (NIKI) GATLIN: CHIEF 573.526.0714</div> <div><ul style="list-style-type: none"><li>APS Policy &amp; Procedures, Forms and Manuals, National Trends</li><li>Staff Development &amp; Training</li><li>Abuse, Neglect &amp; Exploitation (ANE) Presentations</li><li>Custodian of Records Requests</li><li>Information Technology Projects</li><li>Case Compass (Online APS Data Collection System)</li><li>Data Collection and Analysis</li></ul></div>	<div>BUREAU OF PROTECTIVE SERVICES</div> <div>KRISTI SILER: CHIEF 573.624.8243</div> <div><ul style="list-style-type: none"><li>Conduct Investigations into Abuse, Neglect and Exploitation</li><li>Provide protective services interventions to vulnerable adults ensuring safety &amp; protection from risks</li><li>Completes initial response to all reports of Abuse, Neglect, and/or Exploitation.</li><li>Refers cases involving criminal components to SIU for investigative follow-up.</li><li>Coordinates efforts with external agencies to ensure wrap-around services for victims of Abuse, Neglect, and/or Exploitation.</li><li>Provides training/education to community members and partners.</li></ul></div>							
<div>SECTION FOR HOME AND COMMUNITY BASED SERVICES (HCBS)</div> <div>KIM TOEBBEN: DEPUTY DIRECTOR</div> <div>Evelyn Burton LEAD SUPPORT</div> <div>573.522.6987</div>	<div>HCBS ASSESSMENTS, CARE PLANNING &amp; SERVICE COORDINATION</div> <div>HCBS PROGRAMMATIC SUPPORTS – JESSICA SCHAEFER- HCBS PROGRAMMATIC DIRECTOR</div> <table><tr><td><div>HCBS INTAKE AND PERSON CENTERED CARE PLANNING UNIT (PCCP)</div><div>JANA ANDERSON: CHIEF 573.341.1737</div><div><ul style="list-style-type: none"><li>Operate customer service center that receives referrals for HCBS</li><li>Operate a customer service center that receives requests for intermittent care plan changes.</li></ul></div></td><td><div>BUREAU OF HCBS FIELD OPERATIONS</div><div>MATTHEW HOERR –CHIEF 573.522.3333</div><div><ul style="list-style-type: none"><li>Conduct initial assessments and annual reassessments to determine nursing facility level of care for HCBS</li><li>Develop care plans and coordinate care to meet unmet needs to remain in the least restrictive environment</li><li>Provider Reassessor Unit</li></ul></div></td><td><div>SPECIALITY CARE SECTION</div><div>VENICE WOOD: CHIEF 573.751.6246</div><div><ul style="list-style-type: none"><li>Special Health Care Needs</li><li>Adult and Traumatic Brain Injury Program</li><li>Family Partnership</li><li>Children and Youth with SHCN Program</li><li>Healthy Children and Youth Program</li><li>Medically Fragile Adult Waiver</li><li>Show Me Home</li><li>Constituent Services</li><li>No Wrong Door</li></ul></div></td><td><div>HCBS SYSTEMS AND DATA REPORTING (SADR)</div><div>ERICA KELLER: CHIEF 573.290.5163</div><div><ul style="list-style-type: none"><li>HCBS Reporting</li><li>Systems Oversight/ Development</li><li>Research &amp; Special Projects</li><li>Field Assignments</li><li>Resolution of billing and authorization issues.</li><li>Provider Enrollment, Termination, and Revalidation Monitoring</li></ul></div></td><td><div>QUALITY IMPROVEMENT QUALITY ASSURANCE UNIT</div><div>VERONICA JAMESON: SUPERVISOR 573.840.9587</div><div><ul style="list-style-type: none"><li>Evaluation of consistency and accuracy of assessments and care plans</li><li>Programmatic improvement initiatives</li></ul></div><div>FEDERAL PROGRAMS</div><div>JESSICA SCHAEFER – HCBS PROGRAMMATIC DIRECTOR</div></td><td><div>BUREAU OF LONG TERM SERVICES AND SUPPORTS (BLTSS)</div><div>RENA COX: CHIEF 816.889.3050</div><div><ul style="list-style-type: none"><li>State Plan and Federal Waiver Oversight</li><li>Statute, regulation, policy, and forms development and oversight</li><li>Research and special projects</li><li>Coordination with other state agencies</li><li>Training Unit</li><li>HIPAA Compliance</li><li>Hearings Unit</li><li>Stakeholder and provider presentations and outreach</li><li>Resolution of billing and authorization issues</li></ul></div></td></tr></table>					<div>HCBS INTAKE AND PERSON CENTERED CARE PLANNING UNIT (PCCP)</div> <div>JANA ANDERSON: CHIEF 573.341.1737</div> <div><ul style="list-style-type: none"><li>Operate customer service center that receives referrals for HCBS</li><li>Operate a customer service center that receives requests for intermittent care plan changes.</li></ul></div>	<div>BUREAU OF HCBS FIELD OPERATIONS</div> <div>MATTHEW HOERR –CHIEF 573.522.3333</div> <div><ul style="list-style-type: none"><li>Conduct initial assessments and annual reassessments to determine nursing facility level of care for HCBS</li><li>Develop care plans and coordinate care to meet unmet needs to remain in the least restrictive environment</li><li>Provider Reassessor Unit</li></ul></div>	<div>SPECIALITY CARE SECTION</div> <div>VENICE WOOD: CHIEF 573.751.6246</div> <div><ul style="list-style-type: none"><li>Special Health Care Needs</li><li>Adult and Traumatic Brain Injury Program</li><li>Family Partnership</li><li>Children and Youth with SHCN Program</li><li>Healthy Children and Youth Program</li><li>Medically Fragile Adult Waiver</li><li>Show Me Home</li><li>Constituent Services</li><li>No Wrong Door</li></ul></div>	<div>HCBS SYSTEMS AND DATA REPORTING (SADR)</div> <div>ERICA KELLER: CHIEF 573.290.5163</div> <div><ul style="list-style-type: none"><li>HCBS Reporting</li><li>Systems Oversight/ Development</li><li>Research &amp; Special Projects</li><li>Field Assignments</li><li>Resolution of billing and authorization issues.</li><li>Provider Enrollment, Termination, and Revalidation Monitoring</li></ul></div>	<div>QUALITY IMPROVEMENT QUALITY ASSURANCE UNIT</div> <div>VERONICA JAMESON: SUPERVISOR 573.840.9587</div> <div><ul style="list-style-type: none"><li>Evaluation of consistency and accuracy of assessments and care plans</li><li>Programmatic improvement initiatives</li></ul></div> <div>FEDERAL PROGRAMS</div> <div>JESSICA SCHAEFER – HCBS PROGRAMMATIC DIRECTOR</div>	<div>BUREAU OF LONG TERM SERVICES AND SUPPORTS (BLTSS)</div> <div>RENA COX: CHIEF 816.889.3050</div> <div><ul style="list-style-type: none"><li>State Plan and Federal Waiver Oversight</li><li>Statute, regulation, policy, and forms development and oversight</li><li>Research and special projects</li><li>Coordination with other state agencies</li><li>Training Unit</li><li>HIPAA Compliance</li><li>Hearings Unit</li><li>Stakeholder and provider presentations and outreach</li><li>Resolution of billing and authorization issues</li></ul></div>
<div>HCBS INTAKE AND PERSON CENTERED CARE PLANNING UNIT (PCCP)</div> <div>JANA ANDERSON: CHIEF 573.341.1737</div> <div><ul style="list-style-type: none"><li>Operate customer service center that receives referrals for HCBS</li><li>Operate a customer service center that receives requests for intermittent care plan changes.</li></ul></div>	<div>BUREAU OF HCBS FIELD OPERATIONS</div> <div>MATTHEW HOERR –CHIEF 573.522.3333</div> <div><ul style="list-style-type: none"><li>Conduct initial assessments and annual reassessments to determine nursing facility level of care for HCBS</li><li>Develop care plans and coordinate care to meet unmet needs to remain in the least restrictive environment</li><li>Provider Reassessor Unit</li></ul></div>	<div>SPECIALITY CARE SECTION</div> <div>VENICE WOOD: CHIEF 573.751.6246</div> <div><ul style="list-style-type: none"><li>Special Health Care Needs</li><li>Adult and Traumatic Brain Injury Program</li><li>Family Partnership</li><li>Children and Youth with SHCN Program</li><li>Healthy Children and Youth Program</li><li>Medically Fragile Adult Waiver</li><li>Show Me Home</li><li>Constituent Services</li><li>No Wrong Door</li></ul></div>	<div>HCBS SYSTEMS AND DATA REPORTING (SADR)</div> <div>ERICA KELLER: CHIEF 573.290.5163</div> <div><ul style="list-style-type: none"><li>HCBS Reporting</li><li>Systems Oversight/ Development</li><li>Research &amp; Special Projects</li><li>Field Assignments</li><li>Resolution of billing and authorization issues.</li><li>Provider Enrollment, Termination, and Revalidation Monitoring</li></ul></div>	<div>QUALITY IMPROVEMENT QUALITY ASSURANCE UNIT</div> <div>VERONICA JAMESON: SUPERVISOR 573.840.9587</div> <div><ul style="list-style-type: none"><li>Evaluation of consistency and accuracy of assessments and care plans</li><li>Programmatic improvement initiatives</li></ul></div> <div>FEDERAL PROGRAMS</div> <div>JESSICA SCHAEFER – HCBS PROGRAMMATIC DIRECTOR</div>	<div>BUREAU OF LONG TERM SERVICES AND SUPPORTS (BLTSS)</div> <div>RENA COX: CHIEF 816.889.3050</div> <div><ul style="list-style-type: none"><li>State Plan and Federal Waiver Oversight</li><li>Statute, regulation, policy, and forms development and oversight</li><li>Research and special projects</li><li>Coordination with other state agencies</li><li>Training Unit</li><li>HIPAA Compliance</li><li>Hearings Unit</li><li>Stakeholder and provider presentations and outreach</li><li>Resolution of billing and authorization issues</li></ul></div>						

# Home Visiting - Team Members



# Quality Programs - Team Members

