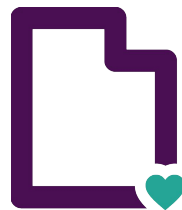
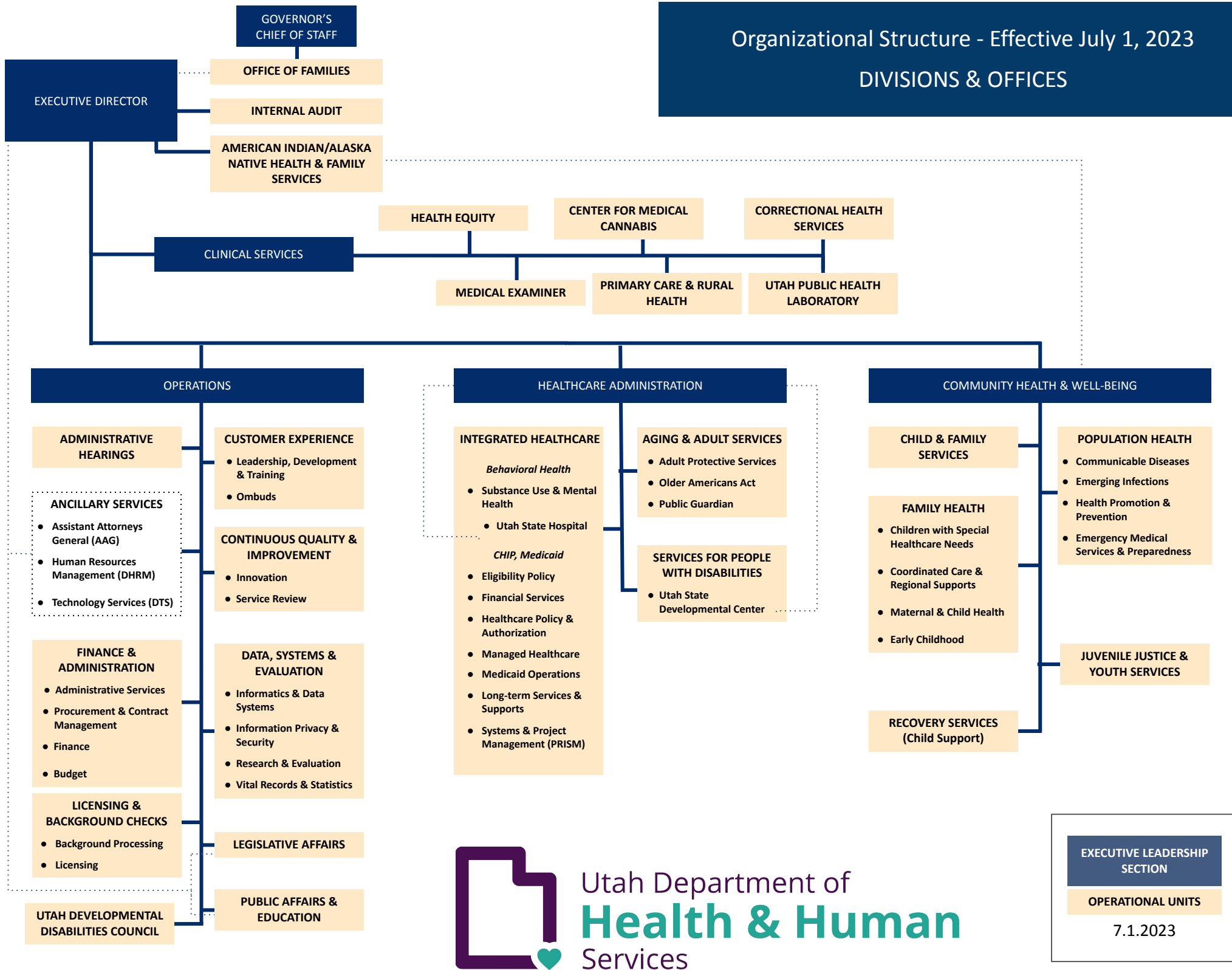


## DIVISIONS & OFFICES

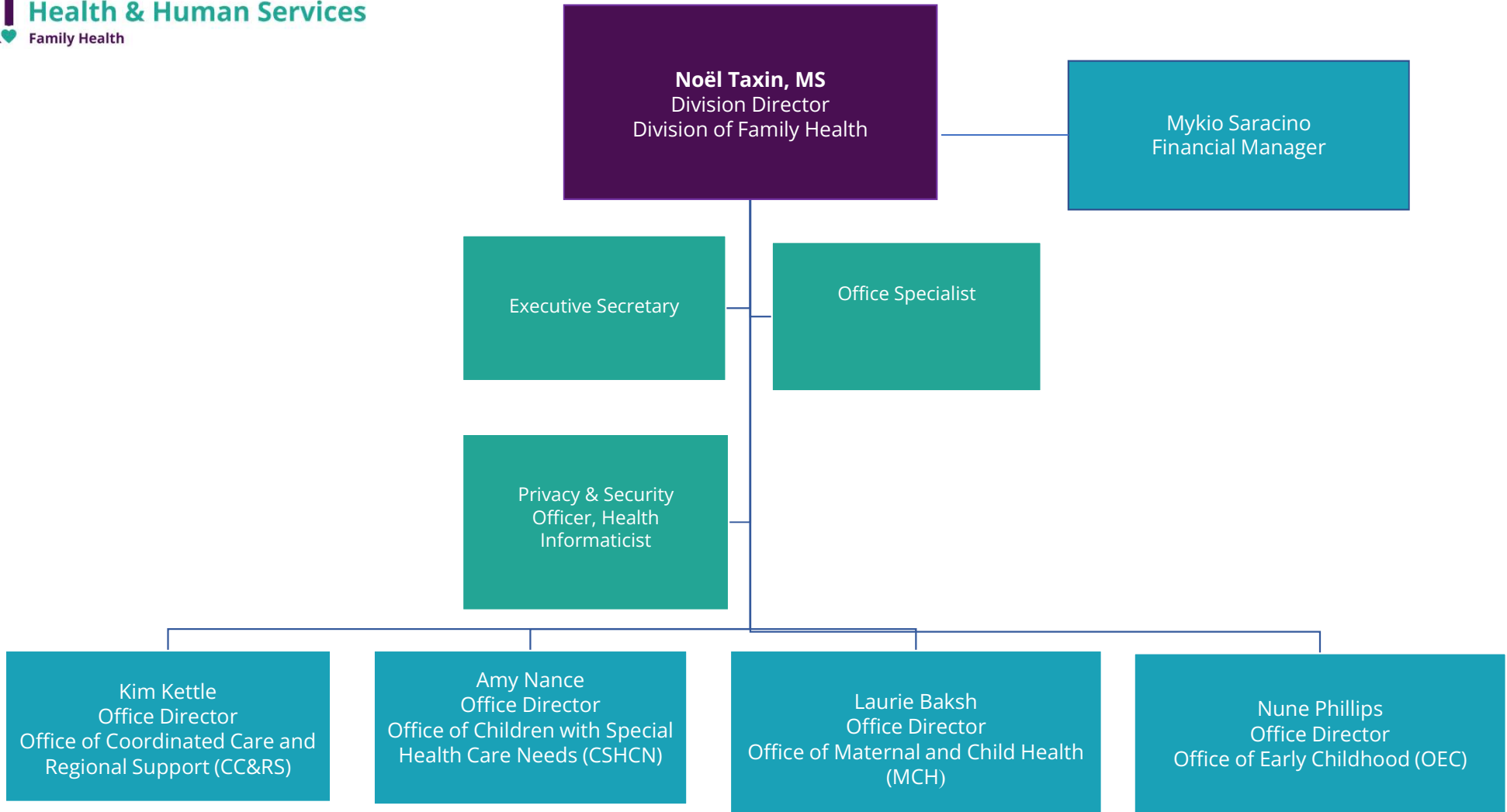


Utah Department of  
**Health & Human**  
Services

**EXECUTIVE LEADERSHIP SECTION**

**OPERATIONAL UNITS**

7.1.2023



## Children with Special Health Care Needs

**Amy Nance**  
Director  
Office of Children with Special Health Care  
Needs  
(CSHCN)

Executive Secretary

**Contracted**

Joey Hanna  
(Program Director)  
Family to Family/Utah Family Voices

Autism System Development Program  
Adult Autism Treatment Account  
Kurt Oscarson Children's Organ  
Transplant Fund Allyson Gamble  
Organ Donation Fund  
& Division Quality Assurance

Children's Hearing Programs  
Children's Hearing Aid Program  
(CHAP)  
Cytomegalovirus (CMV)  
Early Hearing Detection &  
Intervention (EHDI)

Utah Birth Defect Network  
(UBDN)  
Critical Congenital Heart  
Defect (CCHD)

Integrated Services Program

Fostering Healthy Children  
(FHCP)

## Maternal & Child Health (MCH)

**Laurie Baksh**  
Office Director  
Office of Maternal and Child Health  
(MCH)

Executive Assistant

Data Resource Program  
Epidemiologist Manager

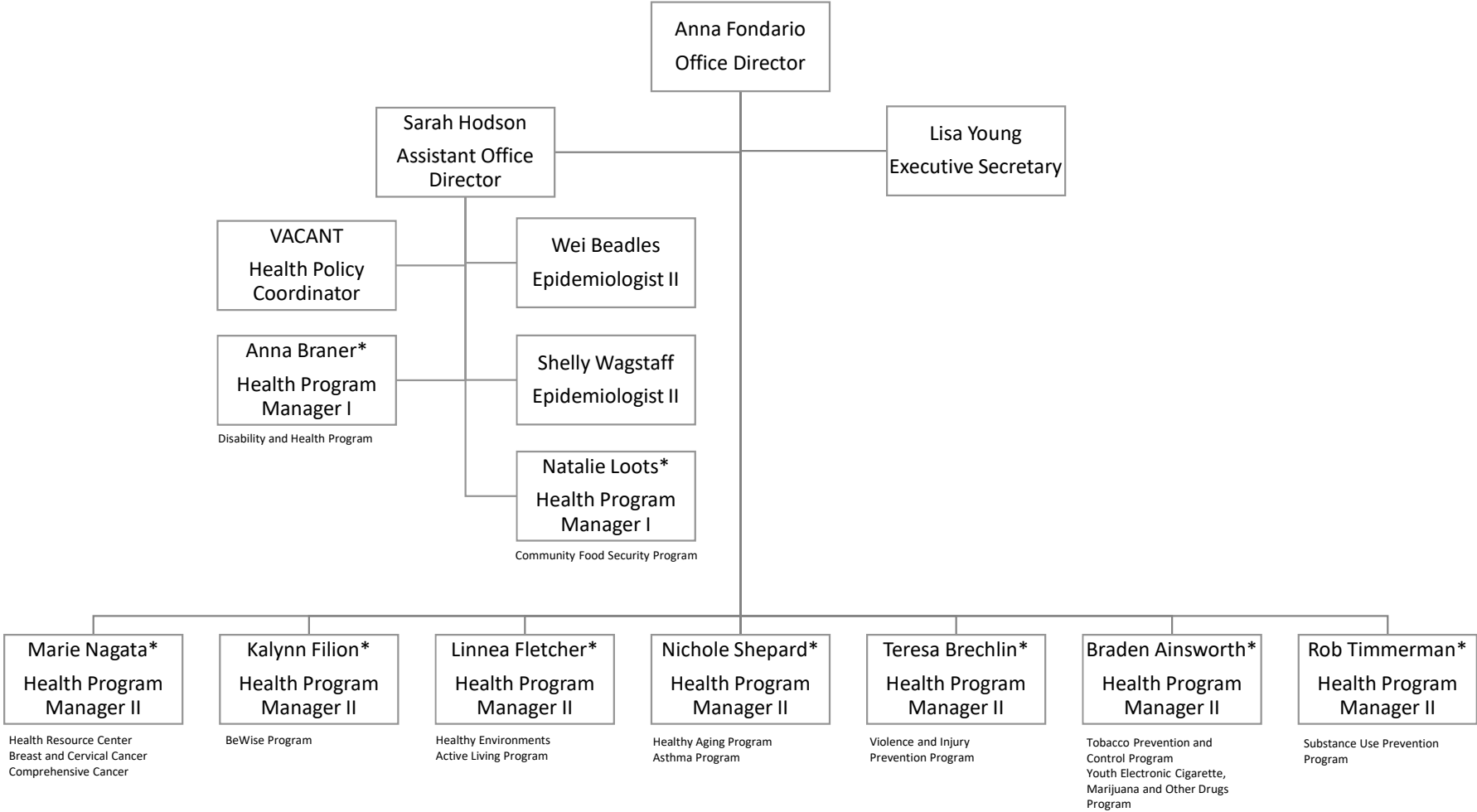
Maternal Infant Health

Women, Infant, & Children  
(WIC)

Adolescent Health Program

Utah Women and  
Newborns Quality  
Collaborative

Utah Department of Health and Human Services  
Community Health and Well-Being Section  
Division of Population Health  
Office of Health Promotion and Prevention



\*Additional program org chart