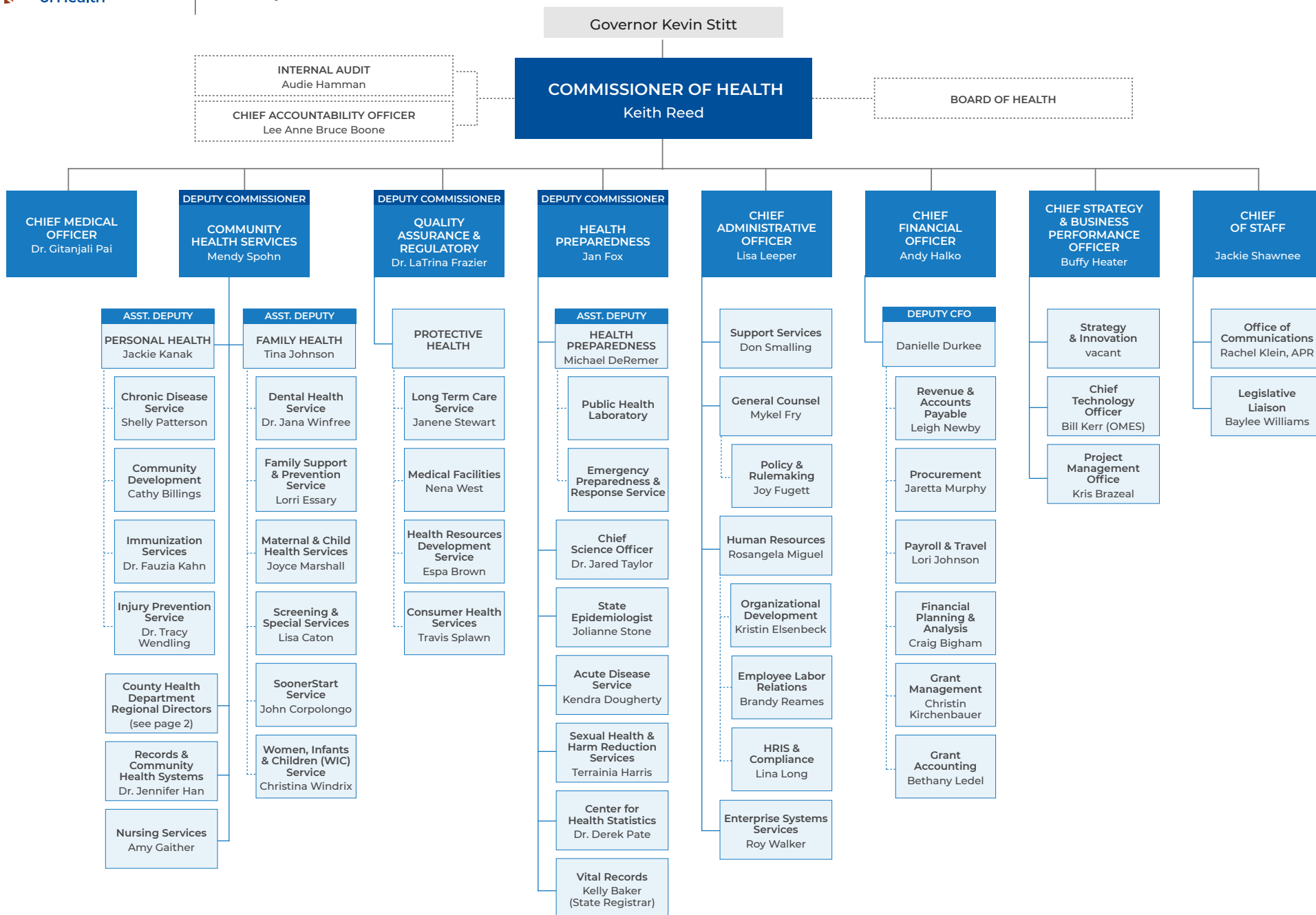


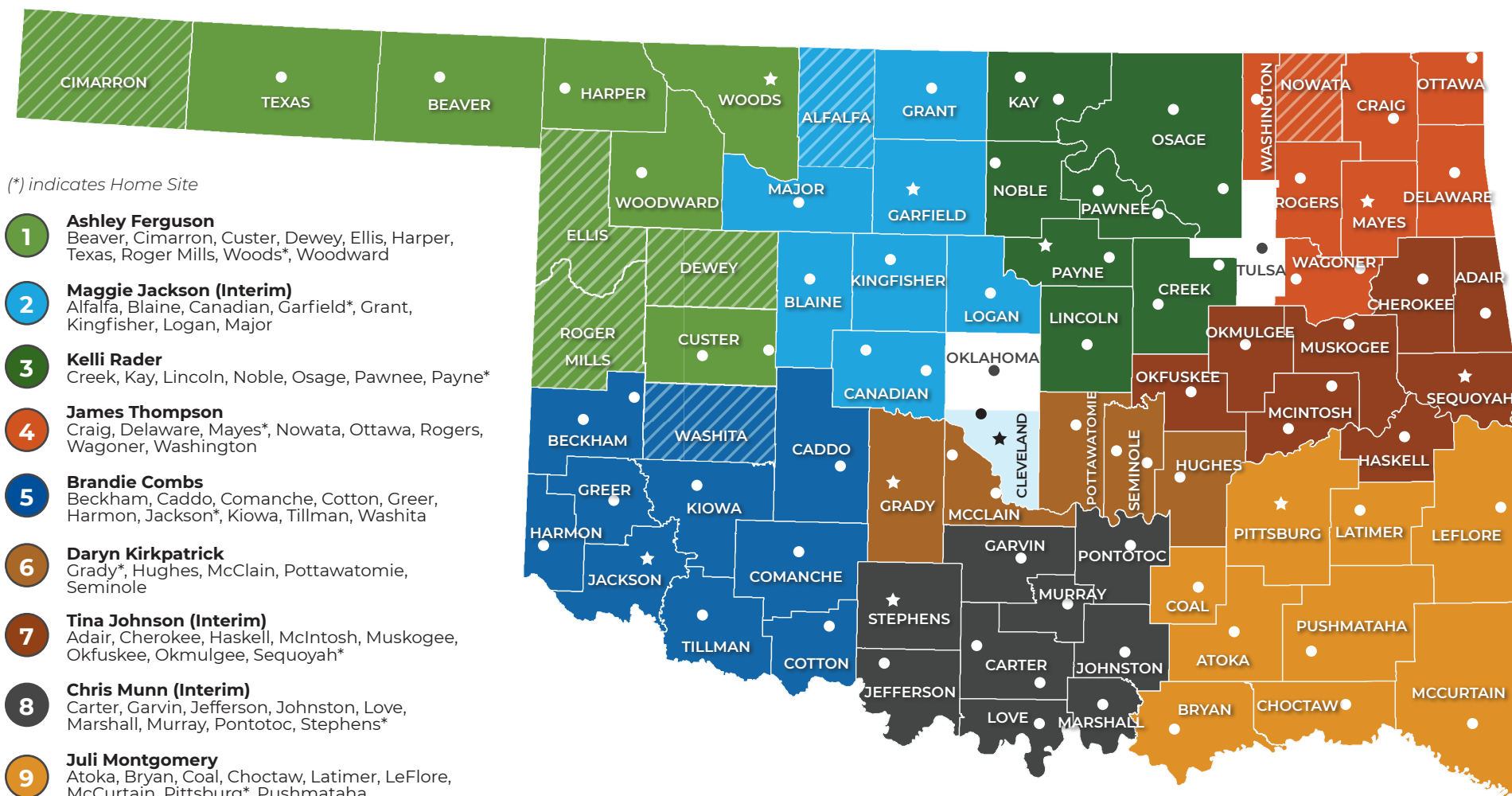
# ORGANIZATION

as of July 12, 2022



## ORGANIZATION

as of July 12, 2022



(\*) indicates Home Site

- 1 Ashley Ferguson**  
Beaver, Cimarron, Custer, Dewey, Ellis, Harper, Texas, Roger Mills, Woods\*, Woodward
- 2 Maggie Jackson (Interim)**  
Alfalfa, Blaine, Canadian, Garfield\*, Grant, Kingfisher, Logan, Major
- 3 Kelli Rader**  
Creek, Kay, Lincoln, Noble, Osage, Pawnee, Payne\*
- 4 James Thompson**  
Craig, Delaware, Mayes\*, Nowata, Ottawa, Rogers, Wagoner, Washington
- 5 Brandie Combs**  
Beckham, Caddo, Comanche, Cotton, Greer, Harmon, Jackson\*, Kiowa, Tillman, Washita
- 6 Daryn Kirkpatrick**  
Grady\*, Hughes, McClain, Pottawatomie, Seminole
- 7 Tina Johnson (Interim)**  
Adair, Cherokee, Haskell, McIntosh, Muskogee, Okfuskee, Okmulgee, Sequoyah\*
- 8 Chris Munn (Interim)**  
Carter, Garvin, Jefferson, Johnston, Love, Marshall, Murray, Pontotoc, Stephens\*
- 9 Juli Montgomery**  
Atoka, Bryan, Coal, Choctaw, Latimer, LeFlore, McCurtain, Pittsburg\*, Pushmataha
- 10 Jackie Kanak**  
Cleveland\*

- Independent Counties**  
Oklahoma City County Health Department  
Tulsa County Health Department
- Counties without a local health department**  
Alfalfa, Cimarron, Dewey, Ellis, Nowata, Roger Mills, Washita

- ★ Regional Director's Home Site
- County Health Department Site

**MATERNAL AND CHILD HEALTH SERVICE**  
**August 2022 (35 Employees) (Working Titles W/ PIN Numbers)**

