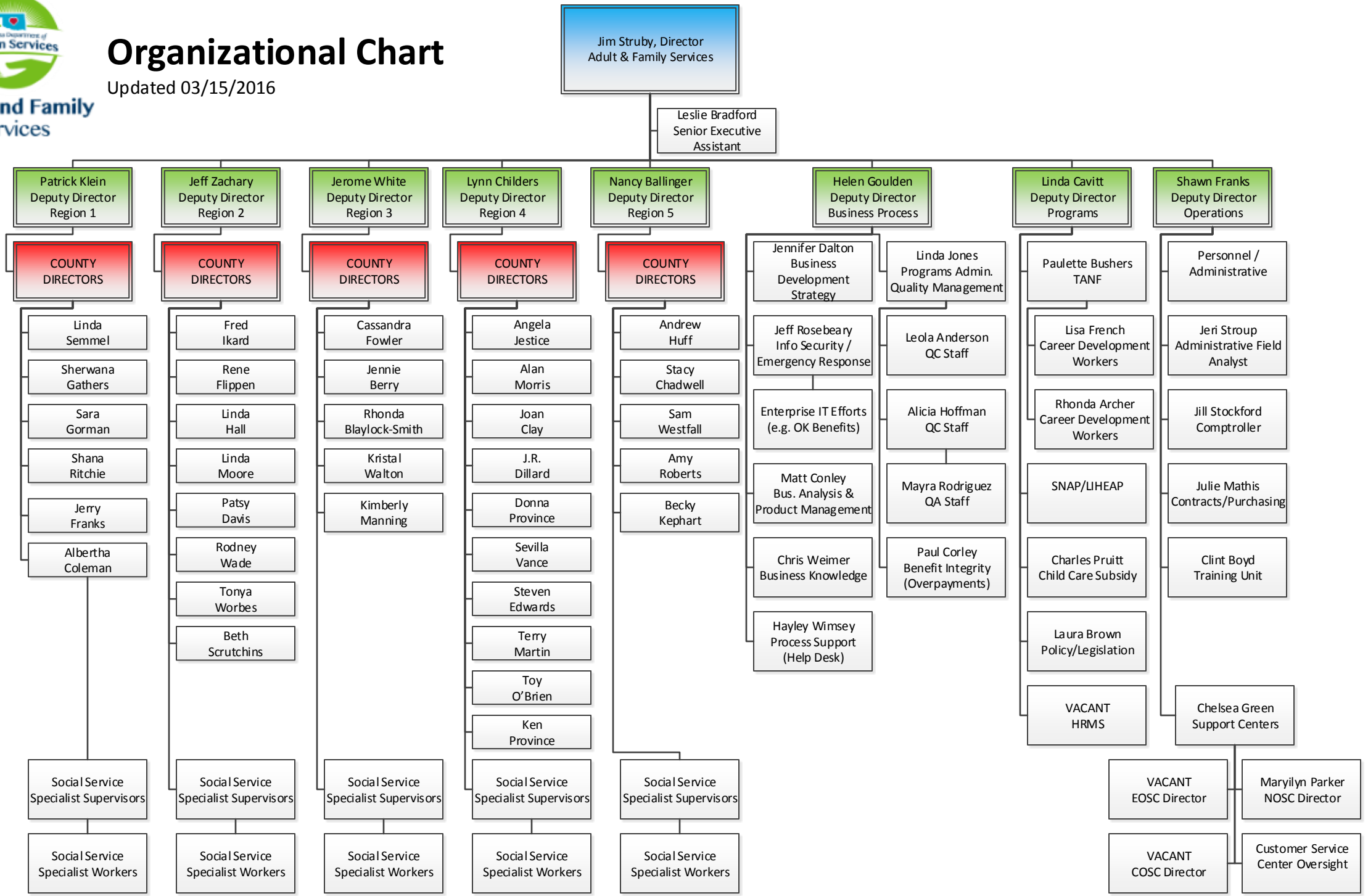




Adult and Family Services

Organizational Chart

Updated 03/15/2016

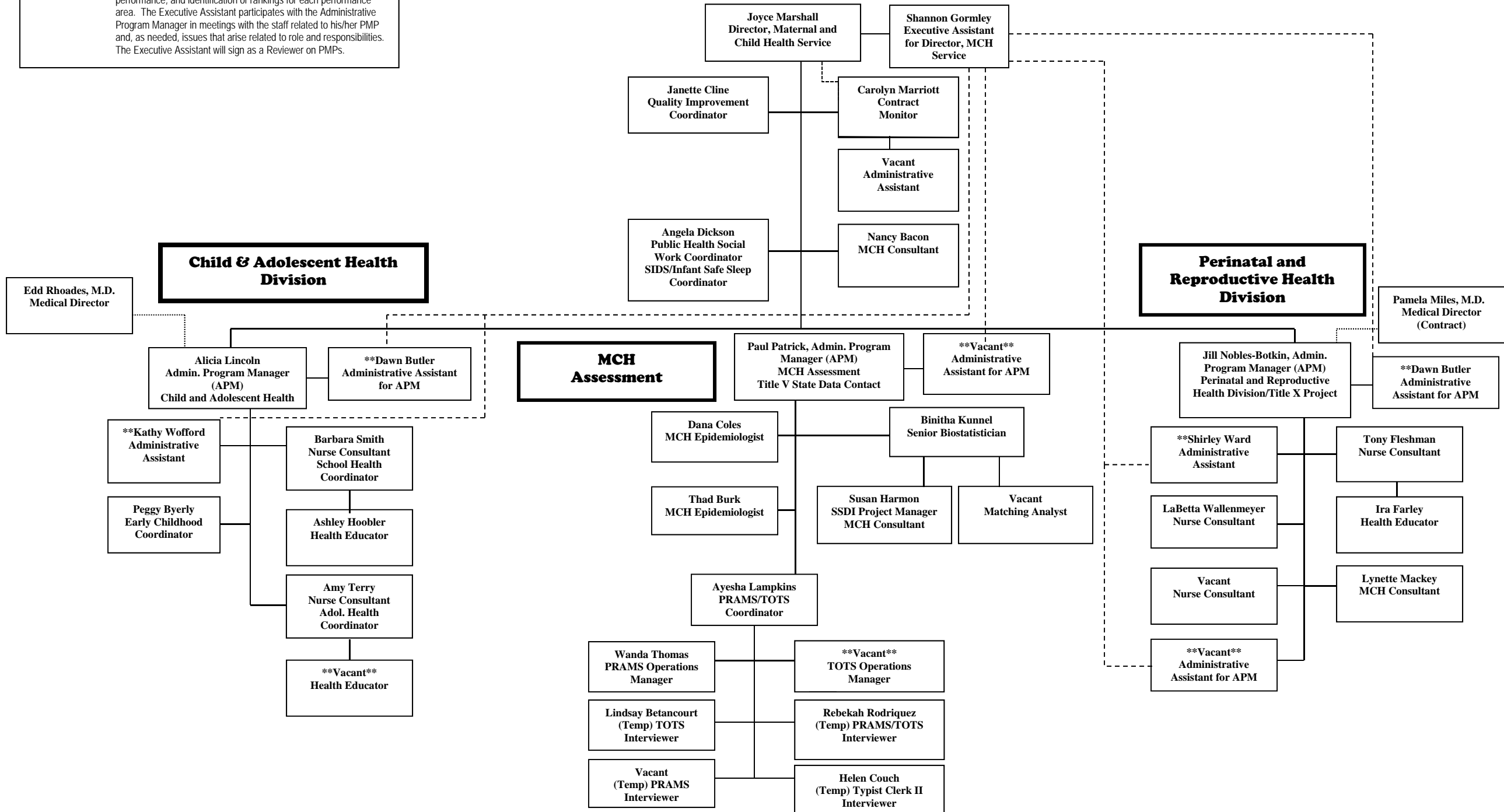


MATERNAL AND CHILD HEALTH SERVICE

April 29, 2016 (37 FTE)

Maternal and Child Health Administration 405-271-4480
Child & Adolescent Health Division 405-271-4471
MCH Assessment 405-271-6761
Perinatal and Reproductive Health Division 405-271-4476

**The Executive Assistant serves as technical supervisor and mentor to the Administrative Assistants. The Executive Assistant works directly with the Administrative Program Manager of the Division on defining the staff's role and responsibilities, development of Performance Management Process (PMPs), review of performance, and identification of rankings for each performance area. The Executive Assistant participates with the Administrative Program Manager in meetings with the staff related to his/her PMP and, as needed, issues that arise related to role and responsibilities. The Executive Assistant will sign as a Reviewer on PMPs.



Oklahoma State Department of Health Organizational Chart

