

**Lori Brenneke, Division Director (573) 751-6080**

Stacy Kempker, Executive Assistant

<p><b>Operations Director &amp; OFABS</b> (573) 526-0219 <u>Maddie Starnes</u>, Chief <u>Christine Knight</u>, Lead Support</p>	<p><b>Center for Local Public Health Services</b> (573) 751-6170 <u>Tiffany Bayer</u>, Local Public Health Liaison <u>Jackie McCoy</u>, Lead Support</p>	<p><b>Title V MCH Services Block Grant</b> (573) 751-6435 <u>Martha Smith</u>, Director Vacant, Lead Support</p>
---------------------------------------------------------------------------------------------------------------------------------------------	----------------------------------------------------------------------------------------------------------------------------------------------------------------------	------------------------------------------------------------------------------------------------------------------------------

<p><b><u>Melinda Laughlin</u>, Deputy Director (573) 751-6080</b></p>			<p><b><u>Steve Cramer</u>, Deputy Director (573) 522-2806</b></p>		
<p><b>State Epidemiologist</b> <u>Dr. Turabelidze</u>, (314) 877-2826</p> <p><b>Bureau of Vital Records</b> <u>Dylan Bryant</u>, Chief and State Registrar (573) 526-0348 <u>Jonathon Wingate</u>, Lead Support</p> <p><b>Bureau of Immunizations (BI)</b> (573) 526-7688 <u>Lynelle Paro</u>, Chief <u>Beth Ott</u>, Lead Support</p>	<p><b><u>Jonathan Garoutte</u>, Assistant Deputy</b> (573) 751-6080</p> <p><b>Bureau of Communicable Disease Control and Prevention (CDCP)</b> (573) 751-6113 <u>John Bos</u>, Chief <u>Denise Branch</u>, Lead Support</p> <p><b>Bureau of Environmental Epidemiology (BEE)</b> (573) 526-4911 <u>Jeff Wenzel</u>, Chief <u>Cynthia Brown</u>, Lead Support</p> <p><b>Bureau of Environmental Health Services (BEHS)</b> (573) 751-2483 <u>Dusty Johnson</u>, Chief <u>Kayla Snapp</u>, Lead Support</p>	<p><b><u>Venkata Garikapaty</u>, Assistant Deputy</b> (573) 522-2808</p> <p><b>Bureau of Health Care Analysis and Data Dissemination (BHCADD)</b> (573) 522-2808 <u>Andrew Hunter</u>, Chief <u>Tara Snellen</u>, Lead Support</p> <p><b>Data Modernization / Interoperability (DMI)</b> (573) 522-2808 <u>Zach Kempf</u>, Chief <u>Tara Snellen</u>, Lead Support</p> <p><b>Office of Epidemiology (OOE)</b> (573) 751-6272 <u>Katie Long</u> <u>Kelsi Kimbrel</u>, Lead Support</p>	<p><b>Bureau of Community Food and Nutrition Assistance (CFNA)</b> (573) 751-6269 <u>Sarah Walker</u>, Chief <u>Stacey Spencer</u>, Lead Support</p> <p><b>Bureau of WIC and Nutrition Services (WICNS)</b> (573) 751-6265 <u>Angie Oesterly</u>, Chief <u>Dora Crawford</u>, Lead Support</p>	<p><b><u>Alicia Jenkins</u>, Assistant Deputy</b> (573) 751-6475</p> <p><b>Office of Minority Health and Health Equity (OMHHE)</b> 800-877-3180 <u>Angel Surdin</u>, Chief <u>Gloria Henderson</u>, Lead Support</p> <p><b>Bureau of HIV, STD and Hepatitis (HSH)</b> (573) 751-6475 <u>Dustin Hampton</u>, Chief <u>Sherry Tolson</u>, Lead Support</p> <p><b>Opioid Response</b> (573) 526-4862 <u>Lynn Smith</u>, Coordinator</p>	<p><b><u>Pat Simmons</u>, Assistant Deputy</b> (573) 522-2806</p> <p><b>Bureau of Cancer and Chronic Disease Control (CCDC)</b> (573) 522-2806 <u>Sandy Hentges</u>, Chief <u>Angela Hammen</u>, Lead Support</p> <p><b>Bureau of Community Health and Wellness (CHW)</b> (573) 522-2820 <u>Karen Wallace</u>, Chief <u>Susan Demsko</u>, Lead Support</p> <p><b>Bureau of Genetics and Healthy Childhood (GHC)</b> (573) 751-6266 <u>Jami Kiesling</u>, Chief <u>Dee Distler</u>, Lead Support</p> <p><b>Office of Dental Health (ODH)</b> (573) 751-5874 <u>Dr. Jacqueline Miller</u>, Director <u>Dione Snitker</u>, Lead Support</p> <p><b>Office of Rural Health and Primary Care (ORHPC)</b> (573) 751-6441 <u>Sara Davenport</u>, Chief <u>Qurizma St. Clair</u>, Lead Support</p> <p><b>Office on Women's Health (OWH)</b> (573) 522-2806 <u>Sarah Ehrhard Reid</u>, Chief <u>Angela Hammen</u>, Lead Support</p>

**Division Operations Unit**

**Maddie Starnes, Chief**

**Office of Financial and Budget Services**

**Purchasing**

**Payment Processing**

**Timekeeping (DELTA) Oversight**

Training on Fiscal Management Leadership and Oversight of fiscal management systems

**DCPH Special Projects Unit**

Continuity of Operations

Fiscal Estimates for Legislation (Fiscal Notes)

Preparation of Annual State Budget Request

Legislative Proposals

**Public Health Information Network (PHIN)**

Collaborates with stakeholders to develop interoperability connections

Ensure IT project completion

**Center for Local Public Health Services (CLPHS) (573) 751-6170**

**Tiffany Bayer, Chief**

CHIP H.S.I.

Core Participation Agreements

New LPHA Administrator and Board of Health Administrator Orientation

Technical Assistance and Linkage for LPHAs

**Data Modernization / Interoperability (DMI) (573) 522-2808**

**Zach Kempf, Manager**

Data Systems Enhancements / Upgrades

Develop interoperability within DCPH Systems

Electronic Lab Reporting

EpiTrax

Immunization Systems Product Owner

Monitoring Reporting Compliance

ShowMeVax

WebSurv

**Office of Dental Health (ODH) (573) 751-5874**

**Dr. Jacqueline Miller, State Dental Director**

Dental Health Education

Dental Health Workforce Issues

Education, Training & Support for Community Water Fluoridation

Elks Mobile Dental and Donated Dental Program

Improving Oral Health Outcomes

Schools Preventive Services Program and Dental Sealant Program for MO Children

Teledentistry

**Office of Epidemiology (OOE) (573) 751-6272**

**Katie Long, Chief**

Epidemiology Teams:

- Chronic Disease
- Maternal Child Health
- Communicable Disease

Surveillance Systems:

- Behavioral Risk Factor Surveillance System (BRFSS)
- County Level Study (CLS)
- Missouri Cancer Registry (MCR)
- Missouri Child Health Assessment Program Survey (MoCHAPS)
- National Violent Death Reporting System (NVDRS)
- Pregnancy Risk Assessment Monitoring System (PRAMS)
- Youth Risk Behavior Surveillance System (YRBS)

Surveillance and Reporting of:

- HIV, STDs and TB
- Maternal Mortality / Morbidity
- Other Communicable Diseases
- Vaccine Preventable Diseases
- Zoonotic Diseases

**Office of Minority Health and Health Equity (OMHHE) 800-877-3180**

**Angel Surdin, Chief**

Minority Infant Mortality Prevention Initiative

Obesity Prevention

Promoting Healthy Minority Communities

**Office of Rural Health and Primary Care (573) 751-6441**

**Sara Davenport, Chief**

Access to Health Care Services

Delta Region Community Health Systems Development Program

Health Equity

Health Professional Shortage Areas

J-1 Visa

Medicare Rural Hospital Flexibility Program

National Interest Waiver

Primary Care, Dental Care, and Mental Health Workforce Development

Professional Student Loan and Loan Repayment Programs

Rural Health Promotion

Small Rural Hospital Improvement Program

State Office of Primary Care

State Office of Rural Health

Rural Healthcare Provider Transition Project

Rural Health Blog

**Office on Women's Health (573) 522-2806**

**Sarah Ehrhard Reid, Chief**

Extended Women's Health Services

Maternal Mortality / PAMR

Maternal Neonatal Levels of Care

Pregnancy Assistance Information

Sexual Violence Prevention

Women's Health Council

**Bureau of Cancer and Chronic Disease Control (CCDC) (573) 522-2806**

**Sandy Hentges, Chief**

ALS

Arthritis and Osteoporosis

Asthma Prevention and Control

Comprehensive Cancer Control

Diabetes Prevention and Control

Heart Disease

Organ Donor Program

Show-Me Healthy Women (Breast and Cervical Cancer Control)

WISEWOMAN

**Bureau of Communicable Disease Control and Prevention (CDCP) (573) 751-6113**

**John Bos, Chief**

Communicable Disease Investigation and Control

Healthcare-associated Infections Program

Tuberculosis Elimination Program

Zoonotic Disease Program

**Bureau of Community Food and Nutrition Assistance (CFNA) (573) 751-6269**

**Sarah Walker, Chief**

Child & Adult Care Food Program

Commodity Supplemental Food Program (CSFP)

Summer Food Service Program

**Bureau of Community Health and Wellness (CHW) (573) 522-2820**

**Karen Wallace, Chief**

Adolescent Health Program

- Personal Responsibility Education Program
- Sexual Risk Avoidance

Building Communities for Better Health

Injury / Violence Prevention

- Safe Kids Coalition

MCH Services Program

Missouri Tobacco Prevention and Control Program

Physical Activity and Nutrition Program

School Health

Worksite Wellness

**Bureau of Environmental Epidemiology (BEE) (573) 526-4911**

**Jeff Wenzel, Chief**

Environmental Surveillance

Environmental Public Health Tracking (EPHT)

Health and Risk Assessment Program (HRAP)

Healthy Indoor Environments

Lead Licensing Program

**Bureau of Environmental Health Services (BEHS) (573) 751-2483**

**Dusty Johnson, Chief**

Emergency Response to Natural Disasters and Emergency Situations  
Environmental Child Care Sanitation Inspections  
Environmental Investigations for Communicable Diseases  
Legionella Control and Prevention Assessments  
Lodging Licensing and Health/Safety Inspections  
Manufactured Food Facility Safety Inspections  
On-Site Waste Water Treatment Training and Evaluations  
Retail Food Safety Training and Inspections

**Bureau of Genetics and Healthy Childhood (GHC) (573) 751-6266**

**Jami Kiesling, Chief**

Adult Genetics (Cystic Fibrosis, Hemophilia, and Sickle Cell Anemia)  
Genetic Services  
Metabolic Formula Distribution  
Newborn Health  
Newborn Hearing Screening  
Newborn Blood Spot Screening  
Prenatal Hepatitis B Prevention and Case Management  
Prenatal Substance Use Prevention  
Sexual Assault Forensic Examination and Child Abuse Resource and Education (SAFE-CARE)  
Sickle Cell Anemia  
SIDS Autopsy Reimbursement  
TEL-LINK

**Bureau of Health Care Analysis and Data Dissemination (BHCADD) (573) 522-2808**

**Andrew Hunter, Chief**

Birth Defects Surveillance  
Drug Overdose Surveillance  
Healthcare-Associated Infection Reporting  
Inpatient and Outpatient Data  
MOPHIMS (MICA and Community Data Profiles)  
Syndromic Surveillance (ESSENCE)  
Vital Statistics (Birth, Death, Marriage, Abortion)

**Bureau of HIV, STD and Hepatitis (BHS) (573) 751-6475**

**Dustin Hampton, Chief**

AIDS Drug Assistance Program (ADAP)  
Ending the HIV Epidemic Initiatives (EHE) – Consider listing as “EHE Initiatives”  
HIV/STD Screening, Testing and Prevention Services  
Housing Opportunities for Persons with AIDS (HOPWA) Program – Consider listing as “HOPWA Program”  
Medicaid AIDS Waiver  
Opioid Response  
Pre-exposure Prophylaxis (PrEP) Coordination – Consider listing as “PrEP Coordination Hepatitis C Prevention and Health Education  
Ryan White HIV Case Management

**Bureau of Immunizations (BI) (573) 526-7688**

**Lynelle Paro, Chief**

Immunizations / Vaccines

Immunizations Quality Improvement for Providers (IQIP)

School & Child Care Survey Reporting

Section 317 Vaccine

ShowMeVax (Immunization Registry)

Vaccines for Children

**Bureau of Vital Records (BVR) (573) 526-0348**

**Dylan Bryant, Chief & State Registrar**

Adoptions

Births

Deaths

Delayed Births

Dissolutions of Marriage

Foreign Born Adoptions

Induced Termination of Pregnancies (ITOPs)

Legitimations

Applications/Reports of Marriage

Missouri Adoptee Rights Act (Pre-Adoptive Requests)

Paternity Affidavits

Presumptive Deaths

Putative Father Registry

Reports of Fetal Death

Statements of Single Status

Surrogacies

**Bureau of WIC and Nutrition Services (WICNS) (573) 751-6265**

**Angie Oesterly, Chief**

Breastfeeding Peer Counseling

Breastfeeding Program

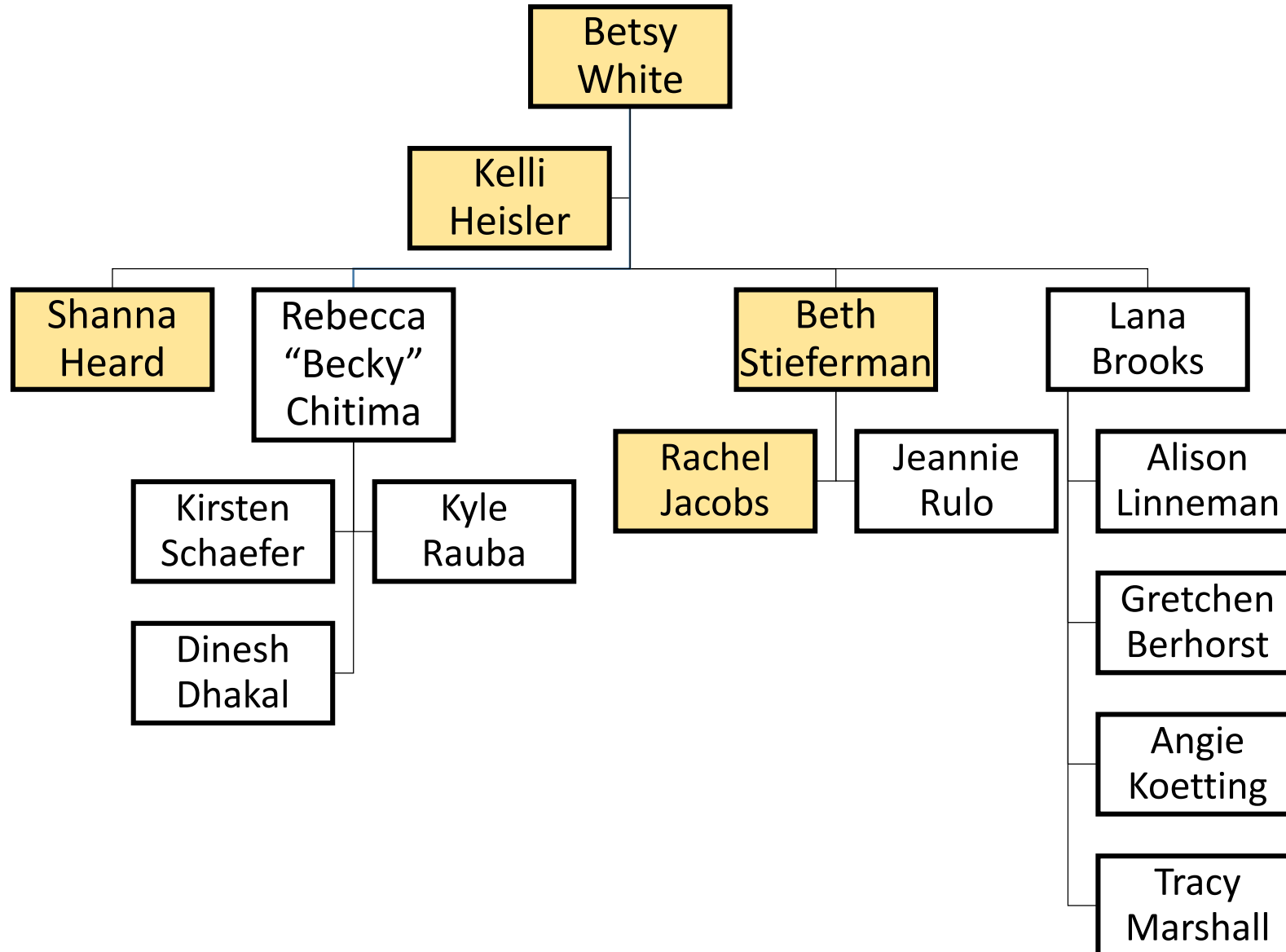
Supplemental Nutrition Program for Women, Infants and Children (WIC)

# Division of Senior and Disability Services (DSDS)

November 2022

<p><b>DSDS DIRECTOR'S OFFICE</b></p> <p><u>MELANIE HIGHLAND:</u> DIRECTOR</p> <p><u>JAKE LUEBBERING:</u> DEPUTY DIRECTOR</p> <p><u>KIM TOEBBEN:</u> DEPUTY DIRECTOR</p> <p>VACANT EXECUTIVE ASSISTANT</p> <p><b>573.526.3626</b></p>	<p><b>CONSTITUENT &amp; EMERGENCY SERVICES UNIT (CESU)</b></p> <p>WENDY BRUEMMER: UNIT MANAGER 573.526.3625</p> <ul style="list-style-type: none"> <li>Liaison for Legislative, constituent, and state agency inquiries; Continuity of</li> <li>Operations Preparedness (COOP), Emergency Preparedness and Disaster Response Training/Tracking for DSDS Staff, Clients and Stakeholders, including AAA's.</li> <li>Coordinate with Office of Public Information (OPI) regarding media inquiries/issues, DSDS Promotions, Public Facing Website, Presentations by DSDS staff, and other Coordinates Activities for Silver Haired Legislature (SHL), Senior Day at the State Fair, Aging Summit and Alzheimer's Walk.</li> </ul>	<p><b>OFFICE OF ORGANIZATIONAL ADVANCEMENT</b></p> <p>JOSEPH SALTER: 573.526.2075</p> <p>TERRY BLACK: 573.526.8574</p> <ul style="list-style-type: none"> <li>Statewide CQI</li> <li>Team Member Engagement</li> <li>Initiatives</li> <li>Telecommuting</li> <li>DSDS Heroes at Work</li> </ul>	<p><b>BUREAU OF SENIOR PROGRAMS (BSP)</b></p> <p>MINDY ULSTAD: CHIEF 573.526.4542</p> <ul style="list-style-type: none"> <li>Alzheimer Services</li> <li>Area Agencies on Aging including: Congregate Meals, Family Caregiver, Home Delivered Meals, Home Modifications, Homemaker Services, Information and Assistance, Medicare Part D Sign-up, Personal Care, Respite, Senior Nutrition, State Plan, Transportation</li> <li>Disease and falls Prevention &amp; Wellness Promotion</li> <li>Grant Development and Oversight</li> <li>Legal Services Developer, including Senior Legal Helpline</li> <li>Senior Independent Living Programs (SILP) Formerly NORC's</li> <li>Senior Community Service</li> <li>Employment Program</li> <li>Senior Immigrants &amp; Refugees</li> </ul>	<p><b>OFFICE OF THE LONG-TERM CARE OMBUDSMAN (LTCO)</b></p> <p>JENNY HOLLANDSWORTH: STATE OMBUDSMAN 573.526.0727</p> <ul style="list-style-type: none"> <li>Advocate for Residents' Rights</li> <li>Assist with questions and complaints from residents and their families regarding "Rights Issues"</li> <li>Coordinate with the ten regional Ombudsman offices comprised of staff and volunteers</li> <li>Trainings and Presentations regarding topics related to Long-Term Care Facility issues</li> </ul>	<p><b>FINANCIAL SERVICES UNIT (FSU)</b></p> <p>SHYRA DOUGHERTY: CHIEF 573.522.9037</p> <ul style="list-style-type: none"> <li>Accounts Payable</li> <li>Budget</li> <li>Employee Expense Accounts</li> <li>Financial Issues</li> <li>Fiscal Notes</li> <li>Grant Oversight</li> <li>Legislative Oversight</li> <li>Payments (DH-59's)</li> <li>Purchasing</li> <li>RTF's, COA's and Salary Justifications</li> <li>Time accounting</li> <li>Fixed Asset Tracking</li> </ul>	
<p><b>SECTION FOR ADULT PROTECTIVE SERVICES (APS)</b></p> <p><u>TIM JACKSON:</u> SECTION ADMINISTRATOR</p> <p><u>SARA AVERY:</u> LEAD SUPPORT</p> <p><b>573.472.6695</b></p>	<p><b>CENTRAL REGISTRY UNIT (CRU)</b></p> <p>ADULT ABUSE, NEGLECT AND FINANCIAL EXPLOITATION HOTLINE: 800.392.0210</p> <p>ONLINE REPORT SUBMISSIONS 24/7: <a href="https://health.mo.gov/safety/abuse">HTTPS://HEALTH.MO.GOV/SAFETY/ABUSE</a></p> <p>Register reports alleging abuse, neglect or financial &amp; exploitation of eligible adults (adults with disabilities age 18 to 59 and seniors age 60 and over) in home and community based settings or residing in or receiving services from: DHSS Licensed Long-Term Care Facilities; Home Health Agencies; Hospice Agencies and Hospitals; Medicaid-funded In-Home Service providers and Consumer Directed Service (CDS) vendors; Missouri Medicaid Audit and Compliance (MMAC); Missouri Department of Mental Health; Missouri Veteran's Homes and VA Hospitals Register Shared Care Tax credit Participants</p>		<p><b>BUREAU OF ADULT PROTECTIVE SERVICES &amp; SUPPORTS (APSS)</b></p> <p>NICOLE (NIKI) GATLIN: CHIEF 573.526.0714</p> <ul style="list-style-type: none"> <li>APS Policy &amp; Procedures, Forms and Manuals, National Trends</li> <li>Staff Development &amp; Training</li> <li>Abuse, Neglect &amp; Exploitation (ANE) Presentations</li> <li>Custodian of Records Requests</li> <li>Information Technology Projects</li> <li>Case Compass (Online APS Data Collection System)</li> <li>Data Collection and Analysis</li> </ul>	<p><b>BUREAU OF PROTECTIVE SERVICES</b></p> <p>KRISTI SILER: CHIEF 573.624.8243</p> <ul style="list-style-type: none"> <li>Conduct Investigations into Abuse, Neglect and Exploitation</li> <li>Provide protective services interventions to vulnerable adults ensuring safety &amp; protection from risks</li> <li>Completes initial response to all reports of Abuse, Neglect, and/or Exploitation.</li> <li>Refers cases involving criminal components to SIU for investigative follow-up.</li> <li>Coordinates efforts with external agencies to ensure wrap-around services for victims of Abuse, Neglect, and/or Exploitation.</li> <li>Provides training/education to community members and partners.</li> </ul>		
<p><b>SECTION FOR HOME AND COMMUNITY BASED SERVICES (HCBS)</b></p> <p><u>VENICE WOOD:</u> SECTION ADMINISTRATOR</p> <p><u>JESSICA SCHAEFER:</u> ASST. SECTION ADMINISTRATOR</p> <p><u>ELLEN WHITTINGTON:</u> LEAD SUPPORT</p> <p><b>573.522.6987</b></p>	<p><b>HCBS ASSESSMENTS, CARE PLANNING &amp; SERVICE COORDINATION</b></p>			<p><b>HCBS PROGRAMMATIC SUPPORTS</b></p>		
	<p><b>HCBS INTAKE AND PERSON CENTERED CARE PLANNING UNIT (PCCP)</b></p> <p>JESSICA BATEMAN: CHIEF 573.522.8195</p> <ul style="list-style-type: none"> <li>Operate call center that receives referrals for HCBS</li> <li>Operate a call center that receives requests for intermittent care plan changes.</li> </ul>	<p><b>BUREAU OF HCBS FIELD OPERATIONS</b></p> <p>VENICE WOOD: SECTION ADMIN 573.526.8597</p> <ul style="list-style-type: none"> <li>Conduct initial assessments and annual reassessments to determine nursing facility level of care for HCBS</li> <li>Develop care plans and coordinate care to meet unmet needs to remain in the least restrictive environment</li> </ul>	<p><b>SPECIAL HEALTH CARE NEEDS (SHCN)</b></p> <p>LISA CRANDAL: CHIEF 573.751.6246</p> <ul style="list-style-type: none"> <li>Adult Brain Injury Program</li> <li>Family Partnership</li> <li>Traumatic Brain Injury State Partnership Grant</li> <li>Missouri Brain Injury Council</li> <li>Children and Youth with SHCN Program</li> <li>Healthy Children and Youth Program</li> <li>Medically Fragile Adult Waiver</li> </ul>	<p><b>HCBS SYSTEMS AND DATA REPORTING (SADR)</b></p> <p>MERCEDES VANDYKE: CHIEF 573.526.8547</p> <ul style="list-style-type: none"> <li>HCBS Reporting</li> <li>Systems Oversight/Development</li> <li>Research &amp; Special Projects</li> <li>Field Assignments</li> <li>Resolution of billing and authorization issues.</li> <li>Provider Enrollment, Termination, and Revalidation Monitoring</li> </ul>	<p><b>QUALITY IMPROVEMENT QUALITY ASSURANCE UNIT</b></p> <p>VERONICA JAMESON: SUPERVISOR 573.840.9587</p> <ul style="list-style-type: none"> <li>Evaluation of consistency and accuracy of assessments and care plans</li> <li>Programmatic improvement initiatives</li> </ul> <p><b>PROVIDER REASSESSOR UNIT</b></p> <p>RENEE GOANS: SUPERVISOR 573.751.6235</p> <p>ABBY GANN: SUPERVISOR 573.526.3921</p>	<p><b>BUREAU OF LONG TERM SERVICES AND SUPPORTS (BLTSS)</b></p> <p>RENA COX: CHIEF 816.889.3050</p> <ul style="list-style-type: none"> <li>State Plan and Federal Waiver Oversight</li> <li>Statute, regulation, policy, and forms development and oversight</li> <li>Research and special projects</li> <li>Coordination with other state agencies</li> <li>Training Unit</li> <li>Show Me Home</li> <li>HIPAA Compliance</li> <li>Hearings Unit</li> <li>Stakeholder and provider presentations and outreach</li> <li>Field Assignments</li> <li>Resolution of billing and authorization issues</li> </ul>

# Home Visiting - Team Members





# Quality Programs - Team Members

