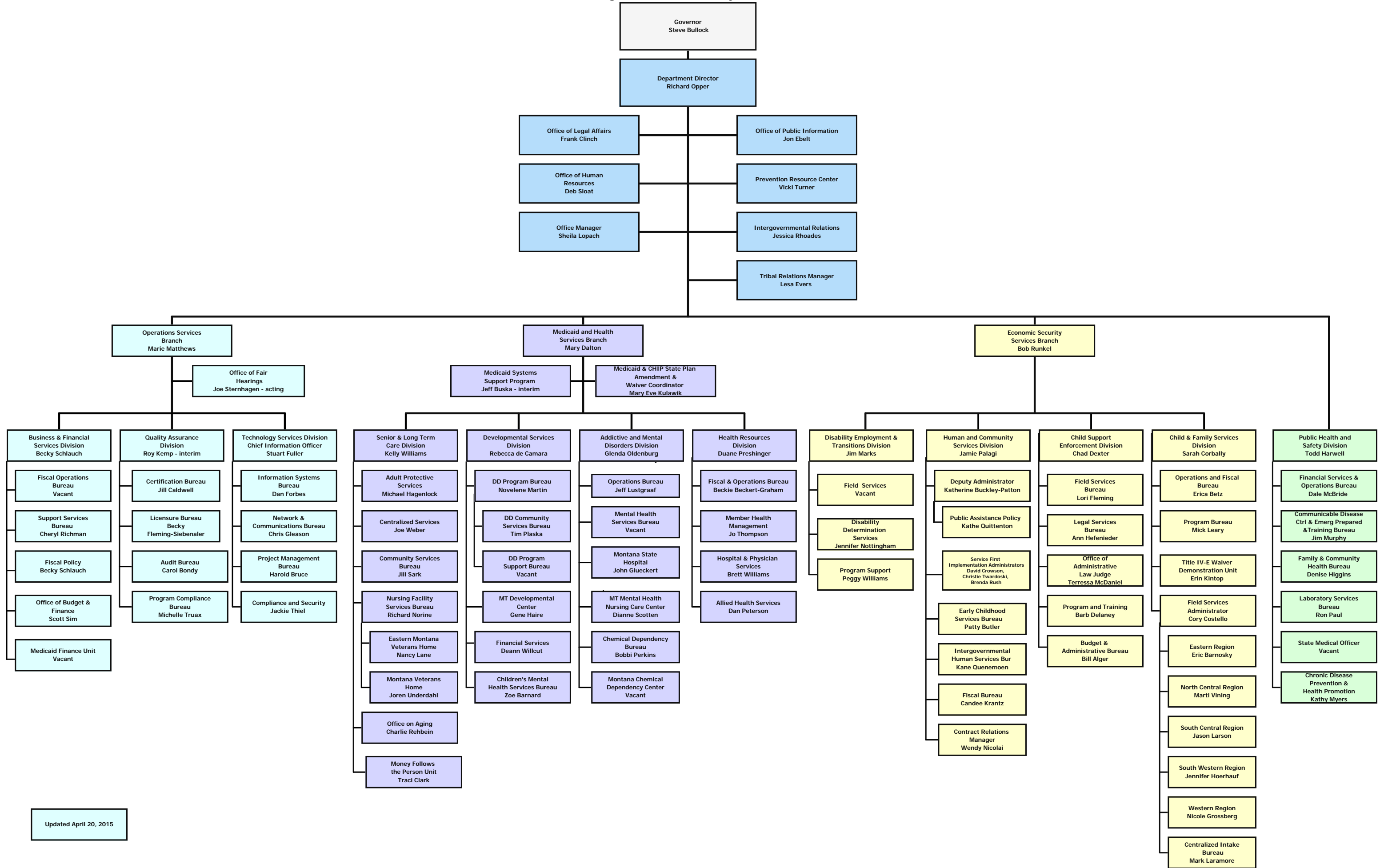


Department of Public Health and Human Services Organizational Chart by Bureau



Updated April 20, 2015

Department Of Public Health & Human Services
Public Health & Safety Division
FAMILY & COMMUNITY HEALTH BUREAU

Denise Higgins
BUREAU CHIEF
69100701

Connie Kyler
Contracts/Fiscal
69100724

**CHILDREN'S SPECIAL
HEALTH
SERVICES SECTION**

Rachel Donohoe
Section Supervisor
69100702

Amber Bell
Newborn Hearing Screening
69101021

Heather Rappin
Nurse Consultant
69100723

Nichole O'Donnell
Clinic Support
69100725

Carissa Scott
Outreach
69100722

Jessica Mason
Data Coordinator
69101004

**MATERNAL CHILD HEALTH/
COORDINATION SECTION**

Ann Buss
Section Supervisor
69100703

Denise Eise
Office Support Spec
69101029

Bar Lund
Health & Specialist
69100619

Vacant
Health & Specialist
69100601

Jill Fife
Primary Care Office
69100912

Toniya Hingston
Chc Health Program

**WOMEN'S & MEN'S HEALTH
SECTION**

Heleen McCaffrey
Section Supervisor
69100802

Kimberly Kish
Health Program
Representative
69100817

Kirk Hughes
Health & Spec
69101218

Christina Drake
Office Support, Specialist
69100721

Patty Kuen
Nurse Consultant
69101727

A.C. Rohrbuecher
Program Specialist
69104810

Tanya Laurito-Gentler
MCH Specialist
69140028

**WIC/NUTRITION
SECTION**

Kate Girid
Section Supervisor
69100708

Vacant
IT Services
69100727

Debi Michaels
IT Services
69100716

Mark Spours
Office Support Spec
69100712

Nichole Sanchez
Contracts
69100714

Vacant
Nutrition & Coordinator
69100715

Chris Fogeman
Nutritional Breastfeeding
Coordinator
69100709

Leah Stone
WIC Vendor Program Manager
69101214

Gabe Rose
Retailer Services
69100713

Karin Moore
Retailer Services
69101026

Benedicta Lohy
Prevention Specialist
69140101

**MATERNAL & EARLY
CHILDHOOD HOME
VISITING**

Dianna Rick
Section Supervisor
69109743

Nichole Cushman
Health & Spec
69101021

Leslie Lee
Health & Spec
69100804

Shea Foley
Health & Spec
69101022

Uiriam Nansen-Gessons
Specialist
69101023

Kate Sherry
Nurse Consultant
69101028