

Lori Brenneke, Division Director (573) 751-6080

Stacy Kempker, Executive Assistant

**Operations Director & OFABS
(573) 526-0219**

Jeff Zoellner, Chief
Christine Knight, Lead Support

**Center for Local Public Health Services
(573) 751-6170**

Tiffany Bayer, Local Public Health Liaison
Jackie McCoy, Lead Support

**Title V MCH Services Block Grant
(573) 751-6435**

Martha Smith, Director
Tara Snellen, Lead Support

Melinda Laughlin, Deputy Director (573) 751-6080

**Jonathan Garoutte,
Assistant Deputy
(573) 751-6111**

**Venkata Garikapaty,
Assistant Deputy
(573) 522-2808**

**State
Epidemiologist**
Dr. Turabelidze,
(314) 877-2826

**ELC/PHHS Grant
Coordinator**
Cheryl Kerr,
(573) 751-6476

**Bureau of Vital
Records**
Dylan Bryant, Chief
and State Registrar
(573) 526-0348
Amber Blackstone,
Lead Support

**Bureau of
Immunizations
(BI)**
(573) 751-7688
Lynelle Paro, Chief
Beth Ott, Lead
Support

**Bureau of
Communicable
Disease Control and
Prevention (CDCP)**
(573) 751-6113
John Bos, Chief
Denise Branch, Lead
Support

**Bureau of
Environmental
Epidemiology (BEE)**
(573) 526-4911
Jeff Wenzel, Chief
Cynthia Brown, Lead
Support

**Bureau of
Environmental
Health Services
(BEHS)**
(573) 751-6095
Dusty Johnson,
Interim Chief
Kayla Snapp, Lead
Support

**Bureau of Health
Care Analysis and
Data Dissemination
(BHCADD)**
(573) 751-6272
Andrew Hunter, Chief
Sarah Weddington,
Lead Support

**Data Modernization /
Interoperability (DMI)**
Zach Kempf, Chief
(573) 522-2808
Sarah Weddington,
Lead Support

**Office of
Epidemiology (OOE)**
(573) 522-2808
Kelsi Kimbrel, Lead
Support

**Bureau of Community
Food and Nutrition
Assistance (CFNA)**
(573) 751-6269
Sarah Walker, Chief
Patti Trinklein, Lead
Support

**Bureau of WIC and
Nutrition Services
(WICNS)**
(573) 751-6265
Angie Oesterly, Chief
Dora Crawford, Lead
Support

Steve Cramer, Deputy Director (573) 522-2806

**Vacant, Assistant
Deputy**

**Pat Simmons, Assitant
Deputy
(573) 522-2806**

**Office of Minority
Health (OMH)**
800-877-3180
Vacant, Chief
Gloria Henderson, Lead
Support

**Bureau of HIV, STD
and Hepatitis (HSH)**
(573) 751-6439
Alicia Jenkins, Chief
Sherry Tolson, Lead
Support

Opioid Response
Lynn Smith, Coordinator

**Bureau of Cancer and
Chronic Disease Control
(CCDC)** (573) 522-2806
Sandy Hentges, Chief
Jackie Sloan, Lead Support

**Bureau of Community Health
and Wellness (CHW)**
(573) 522-2820
Vacant, Chief
Susan Demsko, Lead Support

**Bureau of Genetics and
Healthy Childhood (GHC)**
(573) 751-6266
Jami Kiesling, Chief
Dee Distler, Lead Support

Office of Dental Health (ODH)
(573) 751-5874
Dr. Guy Deyton, Director
Dione Snitker, Lead Support

**Office of Rural Health and
Primary Care (ORHPC)**
(573) 751-6441
Sara Davenport, Chief
Christen Easter, Lead Support

**Office on Women's Health
(OWH)** (573) 751-6219
Sarah Ehrhard Reid, Chief
Carol Rosslan, Lead Support

Division Operations Unit**Jeff Zoellner, Chief****Office of Financial and Budget Services****Purchasing****Payment Processing****Timekeeping (DELTA) Oversight**

Training on Fiscal Management Leadership and Oversight of fiscal management systems

DCPH Special Projects Unit

Fiscal Estimates for Legislation (Fiscal Notes) Preparation of Annual State Budget Request

Legislative Proposals

Continuity of Operations

Public Health Information Network (PHIN)

Ensure IT project completion

Collaborates with stateholders to develop interoperability connections

Center for Local Public Health Services (CLPHS) (573) 751-6170**Tiffany Bayer, Chief**

CHIP H.S.I.

Core Participation Agreements

New LPHA Administrator and Board of Health Administrator Orientation

Technical Assistance and Linkage for LPHAs

Office of Dental Health (ODH) (573) 751-5874**Dr. Guy Deyton, State Dental Director**

Dental Health Education

Dental Health Workforce Issues

Education, Training & Support for Community Water Fluoridation

Elks Mobile Dental and Donated Dental Program

Improving Oral Health Outcomes

Schools Preventive Services Program and Dental Sealant Program for MO Children

Teledentistry

Office of Epidemiology (OOE) (573) 522-2808**Venkata Garikapaty, Chief**

Epidemiology Teams:

- Chronic Disease
- Maternal Child Health
- Communicable Disease

Surveillance Systems:

- Behavioral Risk Factor Surveillance System (BRFSS)
- County Level Study (CLS)
- Missouri Cancer Registry (MCR)
- Missouri Child Health Assessment Program Survey (MoCHAPS)
- National Violent Death Reporting System (NVDRS)
- Pregnancy Risk Assessment Monitoring System (PRAMS)
- Youth Risk Behavior Surveillance System (YRBS)

Surveillance and Reporting of:

- HIV, STDs and TB
- Maternal Mortality / Morbidity
- Other Communicable Diseases
- Vaccine Preventable Diseases
- Zoonotic Diseases

Data Modernization / Interoperability (DMI) (573) 522-2808

Zach Kempf, Manager

Data Systems Enhancements / Upgrades
Develop interoperability within DCPH Systems
Electronic Lab Reporting
EpiTrax
Immunization Systems Product Owner
Monitoring Reporting Compliance
ShowMeVax
WebSurv

Office of Minority Health (OMH) 800-877-3180

Vacant, Chief

Minority Infant Mortality Prevention Initiative
Obesity Prevention
Promoting Healthy Minority Communities

Office of Rural Health and Primary Care (573) 751-6441

Sara Davenport, Chief

Access to Health Care Services
Delta Region Community Health Systems Development Program
Health Equity
Health Professional Shortage Areas
J-1 Visa
Medicare Rural Hospital Flexibility Program
National Interest Waiver
Primary Care, Dental Care, and Mental Health Workforce Development
Professional Student Loan and Loan Repayment Programs
Rural Health Promotion
Small Rural Hospital Improvement Program
State Office of Primary Care
State Office of Rural Health
Rural Healthcare Provider Transition Project
Rural Health Blog

Office on Women's Health (573) 751-6219

Sarah Ehrhard Reid, Chief

Extended Women's Health Services
Maternal Neonatal Levels of Care
Maternal Mortality / PAMR
Pregnancy Assistance Information
Sexual Violence Prevention
Women's Health Council

Bureau of Cancer and Chronic Disease Control (CCDC) (573) 522-2806

Sandy Hentges, Chief

ALS
Arthritis and Osteoporosis
Asthma Prevention and Control
Comprehensive Cancer Control
Diabetes Prevention and Control
Heart Disease
Organ Donor Program
Show-Me Healthy Women (Breast and Cervical Cancer Control)
WISEWOMAN

Bureau of Communicable Disease Control and Prevention (CDCP) (573) 751-6113

John Bos, Chief

Communicable Disease Investigation and Control
Healthcare-associated Infections Program
Tuberculosis Elimination Program
Zoonotic Disease Program

Bureau of Community Food and Nutrition Assistance (CFNA) (573) 751-6269

Sarah Walker, Chief

Child & Adult Care Food Program
Commodity Supplemental Food Program (CSFP)
Summer Food Service Program

Bureau of Community Health and Wellness (CHW) (573) 522-2820

Vacant, Chief

Adolescent Health Program

- Personal Responsibility Education Program
- Sexual Risk Avoidance

Building Communities for Better Health
Injury / Violence Prevention

- Safe Kids Coalition

MCH Services Program
Missouri Tobacco Prevention and Control Program
Physical Activity and Nutrition Program
School Health
Worksite Wellness

Bureau of Environmental Epidemiology (BEE) (573) 526-4911

Jeff Wenzel, Chief

Environmental Illness Surveillance
Environmental Public Health Tracking (EPHT)
Health and Resist Assessment Program (HRAP)
Healthy Indoor Environments
Lead Licensing Program

Bureau of Environmental Health Services (BEHS) (573) 751-6095

Dusty Johnson, Interim Chief

Environmental Investigations for Communicable Diseases
Emergency Response to Natural Disasters and Emergency Situations
Environmental Child Care Sanitation Inspections
Lodging Licensing and Health/Safety Inspections
Legionella Control and Prevention Assessments
On-Site Waste Water Treatment Training and Evaluations
Manufactured Food Facility Safety Inspections
Retail Food Safety Training and Inspections

Bureau of Genetics and Healthy Childhood (GHC) (573) 751-6266

Jami Kiesling, Chief

Adult Genetics (Cystic Fibrosis, Hemophilia, and Sickle Cell Anemia)

Genetic Services

Metabolic Formula Distribution

Newborn Health

Newborn Hearing Screening

Newborn Blood Spot Screening

Prenatal Hepatitis B Prevention and Case Management

Prenatal Substance Use Prevention

Sexual Assault Forensic Examination and Child Abuse Resource and Education (SAFE-CARE)

Sickle Cell Anemia

SIDS Autopsy Reimbursement

TEL-LINK

Bureau of Health Care Analysis and Data Dissemination (BHCADD) (573) 751-6272

Andrew Hunter, Chief

Birth Defects Surveillance

Drug Overdose Surveillance

Healthcare-Associated Infection Reporting

Inpatient and Outpatient Data

MOPHIMS (MICA and Community Data Profiles)

Syndromic Surveillance (ESSENCE)

Vital Statistics (Birth, Death, Marriage, Abortion)

Bureau of HIV, STD and Hepatitis (BHSH) (573) 751-6439

Alicia Jenkins, Chief

AIDS Drug Assistance Program (ADAP)

Ending the HIV Epidemic Initiatives (EHE) – Consider listing as “EHE Initiatives”

HIV/STD Screening, Testing and Prevention Services

Housing Opportunities for Persons with AIDS (HOPWA) Program – Consider listing as “HOPWA Program”

Medicaid AIDS Waiver

Opioid Response

Pre-exposure Prophylaxis (PrEP) Coordination – Consider listing as “PrEP Coordination Hepatitis C Prevention and Health Education

Ryan White HIV Case Management

Bureau of Immunizations (BI) (573) 751-7688

Lynelle Paro, Chief

Immunizations / Vaccines

Immunizations Quality Improvement for Providers (IQIP)

Section 317 Vaccine

ShowMeVax (Immunization Registry)

School & Child Care Survey Reporting

Vaccines for Children

Bureau of Vital Records (BVR) (573) 526-0348

Dylan Bryant, Chief & State Registrar

Adoptions

Births

Deaths

Delayed Births

Dissolutions of Marriage

Reports of Fetal Death

Foreign Born Adoptions

Induced Termination of Pregnancies (ITOPs)

Legitimations

Applications/Reports of Marriage

Missouri Adoptee Rights Act (Pre-Adoptive Requests)

Paternity Affidavits

Presumptive Deaths

Putative Father Registry

Statements of Single Status

Surrogacies

Bureau of WIC and Nutrition Services (WICNS) (573) 751-6265

Angie Oesterly, Chief

Breastfeeding Program

Breastfeeding Peer Counseling

Supplemental Nutrition Program for Women, Infants and Children (WIC)

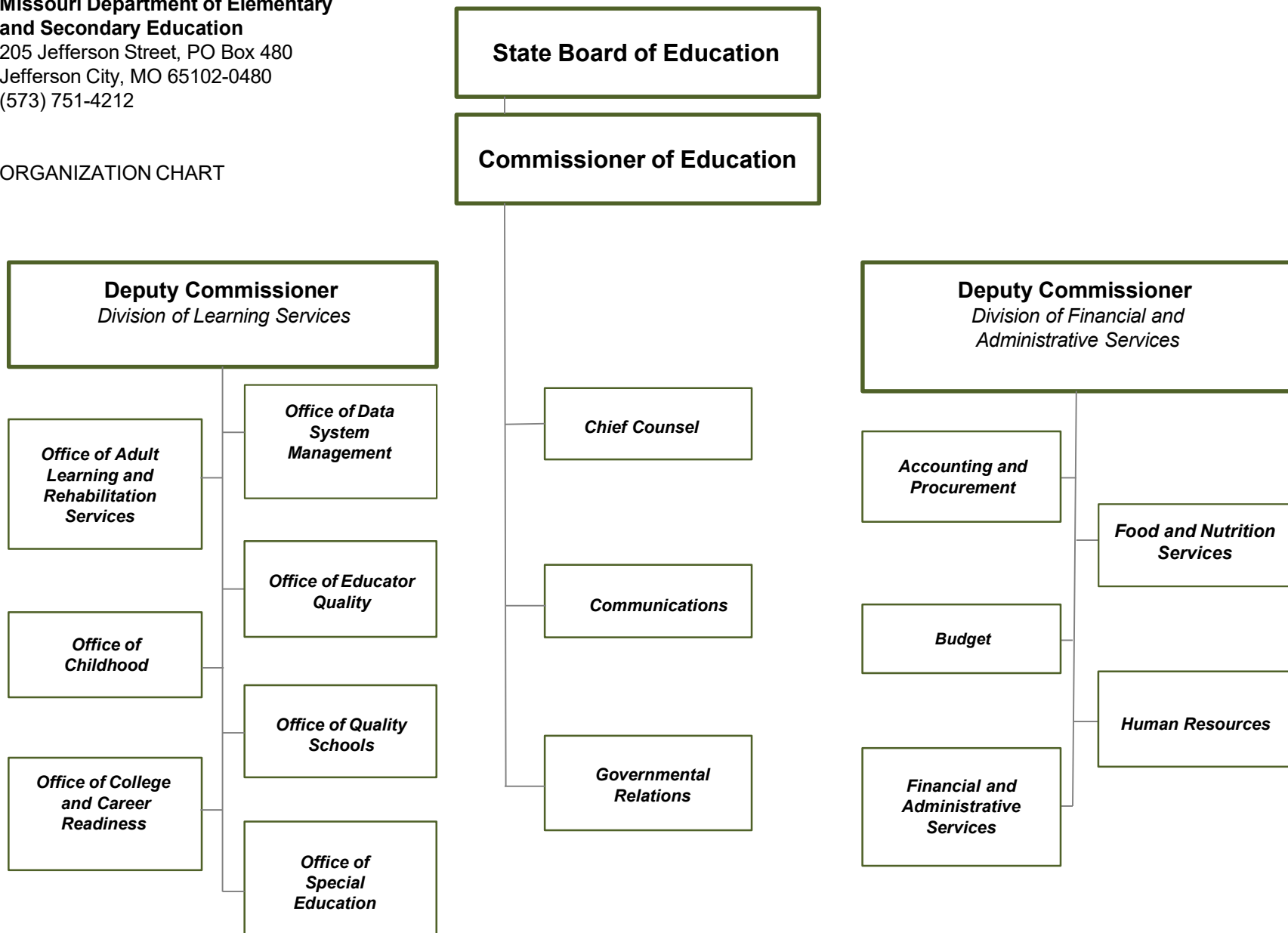
Division of Senior and Disability Services (DSDS)

Updated July 2022

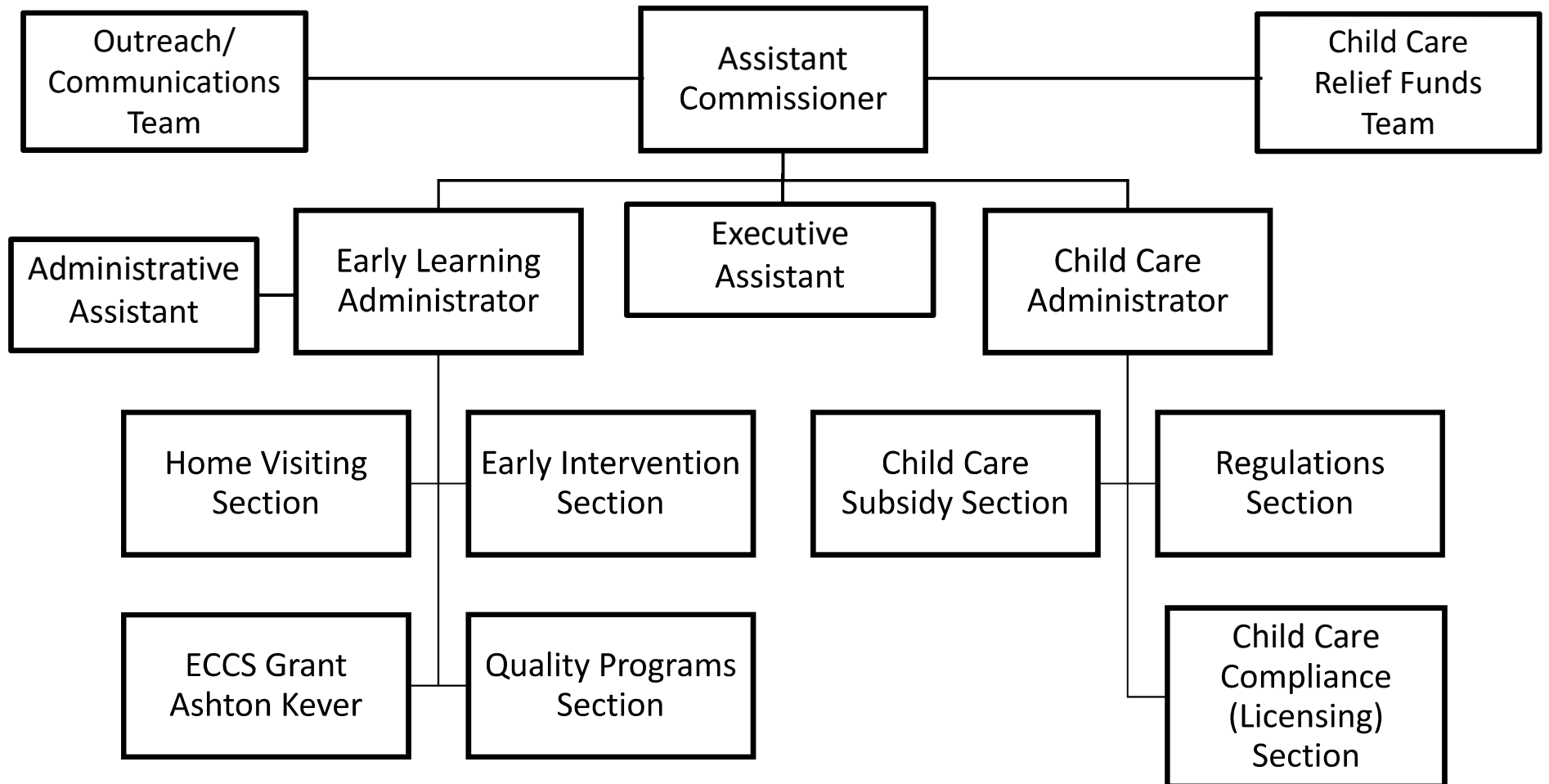
<u>DSDS DIRECTOR'S OFFICE</u> <u>MELANIE HIGHLAND:</u> DIRECTOR <u>JAKE LUEBBERING:</u> DEPUTY DIRECTOR <u>KIM TOEBBEN:</u> DEPUTY DIRECTOR <u>JOANIE COOK</u> EXECUTIVE ASSISTANT 573.526.3626	<u>CONSTITUENT & EMERGENCY SERVICES UNIT (CESU)</u> WENDY BRUEMMER: UNIT MANAGER 573.526.3625 <ul style="list-style-type: none">• Liaison for Legislative, constituent, and state agency inquiries;• Continuity of Operations Preparedness (COOP), Emergency Preparedness and Disaster Response Training/Tracking for DSDS Staff, Clients and Stakeholders, including AAA's.• Coordinate with Office of Public Information (OPI) regarding media inquiries/issues, DSDS Promotions, Public Facing Website, Presentations by DSDS staff, and other Coordinates Activities for Silver Haired Legislature (SHL), Senior Day at the State Fair, Aging Summit and Alzheimer's Walk.	<u>OFFICE OF ORGANIZATIONAL ADVANCEMENT</u> JOSEPH SALTER: 573.526.2075 TERRY BLACK: 573.526.8574 <ul style="list-style-type: none">• Statewide CQI• Team Member Engagement Initiatives• Telecommuting• DSDS Heroes at Work	<u>BUREAU OF SENIOR PROGRAMS (BSP)</u> MINDY ULSTAD: CHIEF 573.526.4542 <ul style="list-style-type: none">• Alzheimer Services• Area Agencies on Aging including: Congregate Meals, Family Caregiver, Home Delivered Meals, Home Modifications, Homemaker Services, Information and Assistance, Medicare Part D Sign-up, Personal Care, Respite, Senior Nutrition, State Plan, Transportation• Disease and falls Prevention & Wellness Promotion• Grant Development and Oversight• Legal Services Developer, including Senior Legal Helpline• Senior Independent Living Programs (SILP) <i>Formerly NORC's</i>	(cont.) <ul style="list-style-type: none">• Senior Community Service• Employment Program• Senior Immigrants & Refugees <u>OFFICE OF THE LONG-TERM CARE OMBUDSMAN (LTCO)</u> JENNY HOLLANDSWORTH: STATE OMBUDSMAN 573.526.0727 <ul style="list-style-type: none">• Advocate for Residents' Rights• Assist with questions and complaints from residents and their families regarding "Rights Issues"• Coordinate with the ten regional Ombudsman offices comprised of staff and volunteers• Trainings and Presentations regarding topics related to Long-Term Care Facility issues	<u>FINANCIAL SERVICES UNIT (FSU)</u> SHYRA DOUGHERTY: CHIEF 573.522.9037 <ul style="list-style-type: none">• Accounts Payable• Budget• Employee Expense Accounts• Financial Issues• Fiscal Notes• Grant Oversight• Legislative Oversight• Payments (DH-59's)• Purchasing• RTF's, COA's and Salary Justifications• Time accounting• Fixed Asset Tracking				
<u>SECTION FOR ADULT PROTECTIVE SERVICES (APS)</u> <u>TIM JACKSON:</u> SECTION ADMINISTRATOR <u>SARA AVERY:</u> LEAD SUPPORT 573.472.6695	<u>BUREAU OF INTAKE & INVESTIGATIONS</u> JERRY GREENE: CHIEF 573.522.9215 ADULT ABUSE, NEGLECT AND FINANCIAL EXPLOITATION HOTLINE: 800.392.0210 (CRU) ONLINE REPORT SUBMISSIONS 24/7: HTTPS://HEALTH.MO.GOV/SAFETY/ABUSE			<u>BUREAU OF ADULT PROTECTIVE SERVICES & SUPPORTS (APSS)</u> NICOLE (NIKI) GATLIN: CHIEF 573.526.0714 <ul style="list-style-type: none">• APS Policy & Procedures, Forms and Manuals, National Trends• Staff Development & Training• Abuse, Neglect & Exploitation (ANE) Presentations• Custodian of Records Requests• Information Technology Projects• Case Compass (Online APS Data Collection System)• Data Collection and Analysis	<u>BUREAU OF PROTECTIVE SERVICES</u> KRISTI SILER: CHIEF 573.624.8243 <ul style="list-style-type: none">• Conduct Investigations into Abuse, Neglect and Exploitation• Provide protective services interventions to vulnerable adults ensuring safety & protection from risks• Completes initial response to all reports of Abuse, Neglect, and/or Exploitation.• Refers cases involving criminal components to SIU for investigative follow-up.• Coordinates efforts with external agencies to ensure wrap-around services for victims of Abuse, Neglect, and/or Exploitation.• Provides training/education to community members and partners.				
<u>SECTION FOR HOME & COMMUNITY BASED SERVICES (HCBS)</u> <u>VENICE WOOD:</u> SECTION ADMINISTRATOR <u>JESSICA SCHAEFER:</u> ASST. SECTION ADMINISTRATOR <u>ELLEN WHITTINGTON:</u> LEAD SUPPORT 573.522.6987	<u>HCBS ASSESSMENTS, CARE PLANNING & SERVICE COORDINATION</u> <u>BUREAU OF HCBS FIELD OPERATIONS</u> VENICE WOOD: SECTION ADMINISTRATOR 573.526.8597 <ul style="list-style-type: none">• Conduct initial assessments and annual reassessments to determine if individuals meet nursing facility level of care, develop care plans to meet unmet needs to remain in the least restrictive environment			<u>SPECIAL HEALTH CARE NEEDS (SHCN)</u> LISA CRANDALL: CHIEF 573.751.6246 <ul style="list-style-type: none">• Adult Brain Injury Program• Brain Injury Waiver Program• MO Brain Injury Advisory Council• Traumatic Brain Injury Grant• Children and Youth with Special Health Care Needs Program• Family Partnership• Kids Assistive	Technology Project <ul style="list-style-type: none">• Healthy Children and Youth Program• Medically Fragile Adult Waiver Program <u>HCBS INTAKE & PERSON CENTERED CARE PLANNING UNIT (PCCP)</u> JESSICA BATEMAN: CHIEF 573.522.8195 <ul style="list-style-type: none">• Operate call center that receives referrals/ requests and completes care plan changes for the following HCBS services:	<ul style="list-style-type: none">✓ State Plan Personal✓ Care Agency model, Residential Care Facilities(RCF) and Consumer Directed Services (CDS)✓ Adult Day Care Waiver✓ Aged and Disabled Waiver✓ Home Delivered Meals (HDM)✓ Home Care & Respite✓ Independent Living Waiver (ILW)✓ Structured Family Care Giving Waiver (SFCW)	<u>HCBS SYSTEMS & DATA REPORTING (SADR)</u> TRAVIS WEST: CHIEF 573.526.8547 <ul style="list-style-type: none">• HCBS Reporting• CyberAccess Web Tool, FRED, Provider Database, CIMOR, and REDCap Oversight• Provider Enrollment, Termination, & Revalidation Monitoring• Resolution of Billing & Authorization Issues• Research & Special Projects• Assessment Assignment• Project Management• HIPAA Compliance• Hearings Unit	<u>QUALITY IMPROVEMENT QUALITY ASSURANCE UNIT (QIQA)</u> VERONICA JAMESON: SUPERVISOR 573.840.9587 <ul style="list-style-type: none">• Evaluation of DSDS staff and provider re-assessor assessments and care planning accuracy and consistency.• Programmatic improvement initiatives <u>PROVIDER REASSESSOR UNIT</u> RENEE GOANS: 573.751.6235 ABBY WECKENBORG: 573.526.3921 <ul style="list-style-type: none">• Review and final authorization of provider re-assessor assessments and care plans	<u>BUREAU OF LONG-TERM SERVICES & SUPPORTS (LTSS)</u> RENA COX: CHIEF 816.889.3050 <ul style="list-style-type: none">• State Plan and Waiver Services• Statutes and Regulations for HCBS Programs• Policy, Forms and Program Development• Presentations for Providers and Stakeholders• Research and Special Assignments• Coordination with other State agencies• Training Unit• Money Follows the Person (MFP)

**Missouri Department of Elementary
and Secondary Education**
205 Jefferson Street, PO Box 480
Jefferson City, MO 65102-0480
(573) 751-4212

ORGANIZATION CHART



Office of Childhood Organization Chart



Section for Home Visiting



Lisa Ivy

Vacant

Home Visiting Section Leader

16 team members

Home visiting programs, school-based
Parents as Teachers parent education
program, Safe Sleep & Safe Cribs

Section for Early Intervention



Lisa Ivy

Sara Ruediger

Early Intervention Section Leader

9 team members

First Steps early intervention
services, Regional hubs & Community
leaders resource initiative

Section for Quality Programs



Lisa Ivy

Stephanie Chandler

Quality Programs Section Leader

16 team members

Preschool, afterschool, various onsite
TA/consultations, PD activities for early
learning programs, Quality Assurance
Report pilot project