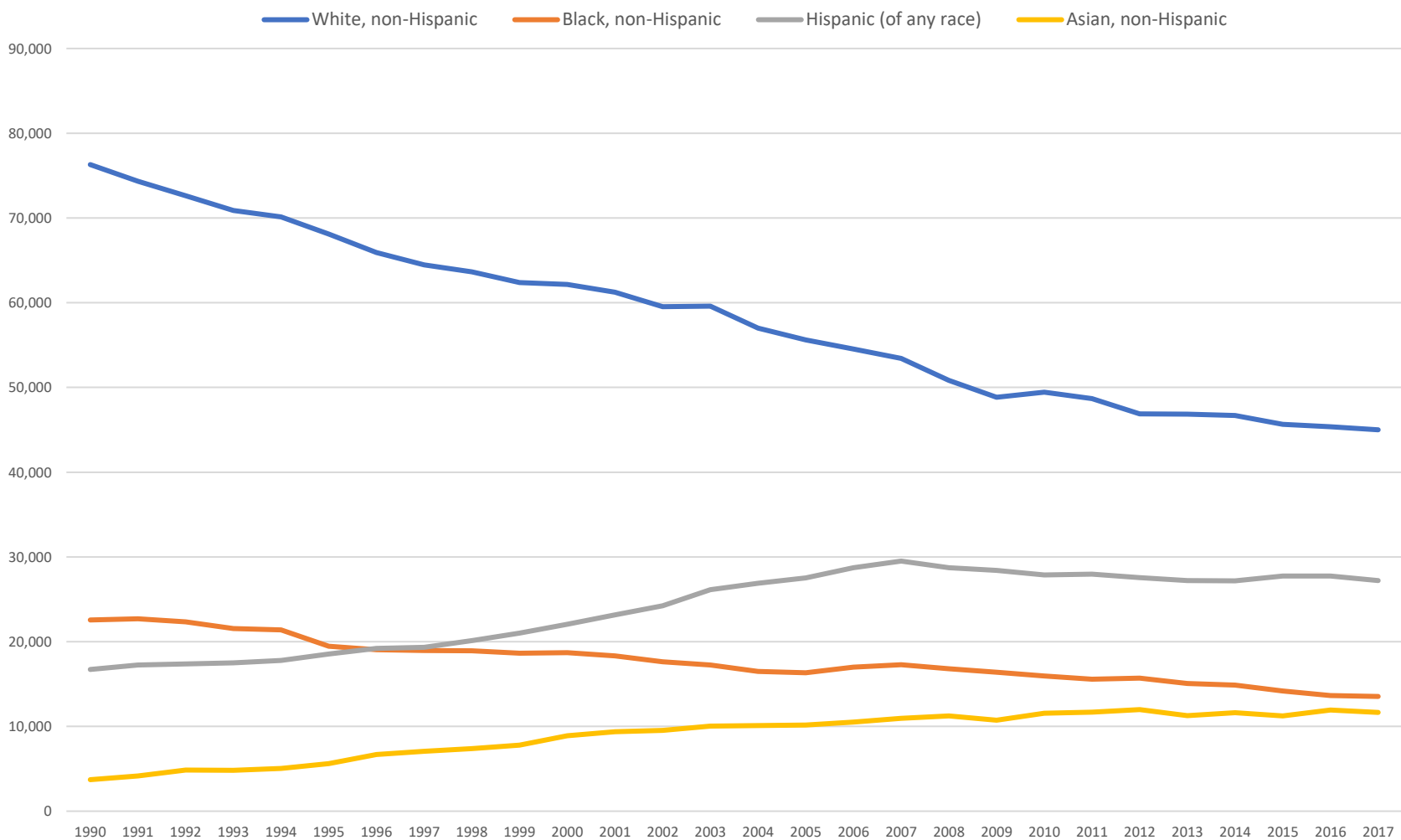


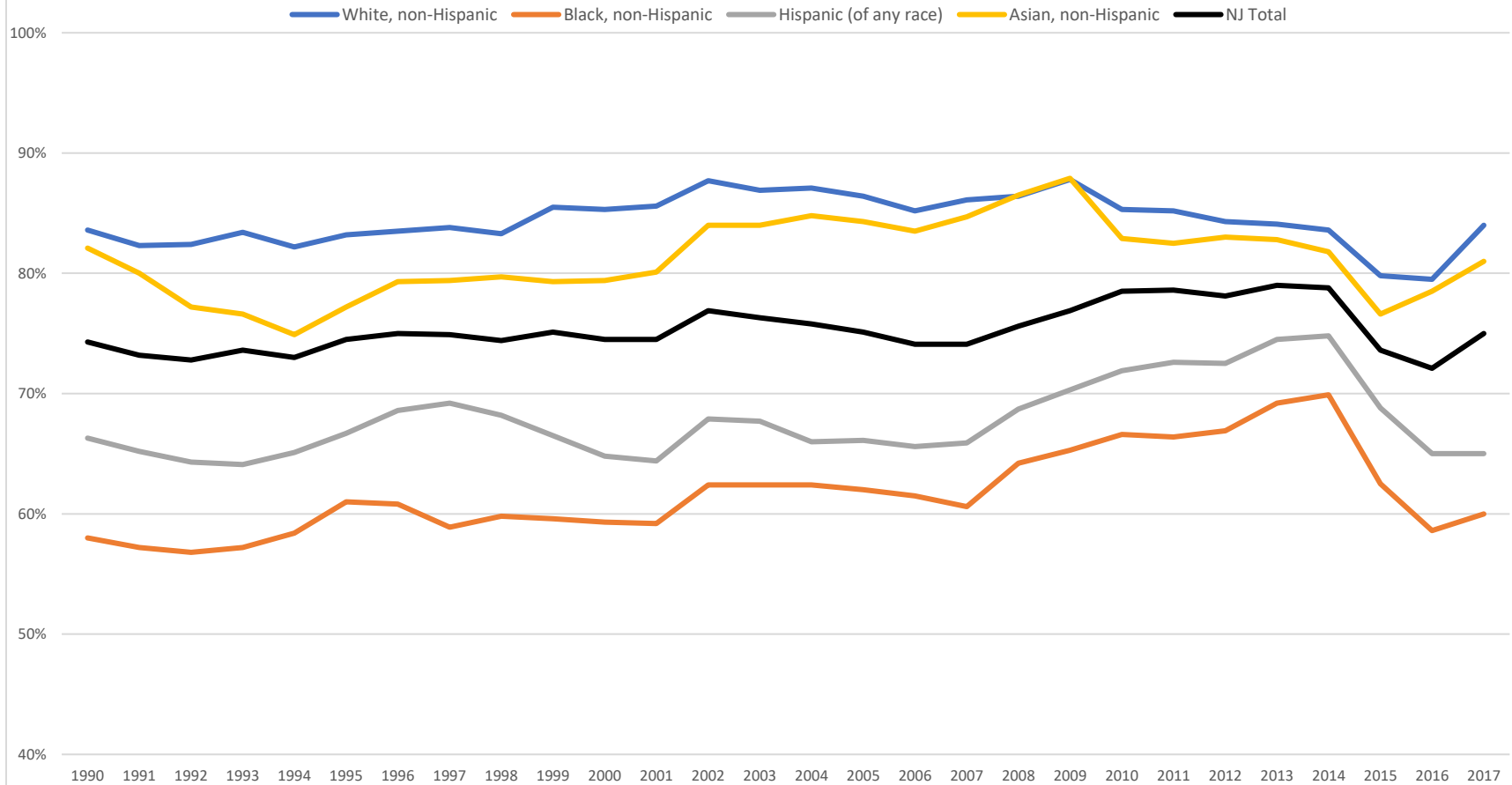
New Jersey Births by Race/Ethnicity*



Source: NJ Birth Certificate Database, Office of Vital Statistics and Registry, NJ DOH

*Race/ethnicity groups - White, non-Hispanic; Black, non-Hispanic; Hispanic; Asian, non-Hispanic

New Jersey First Trimester Prenatal Care Initiation by Race/Ethnicity*

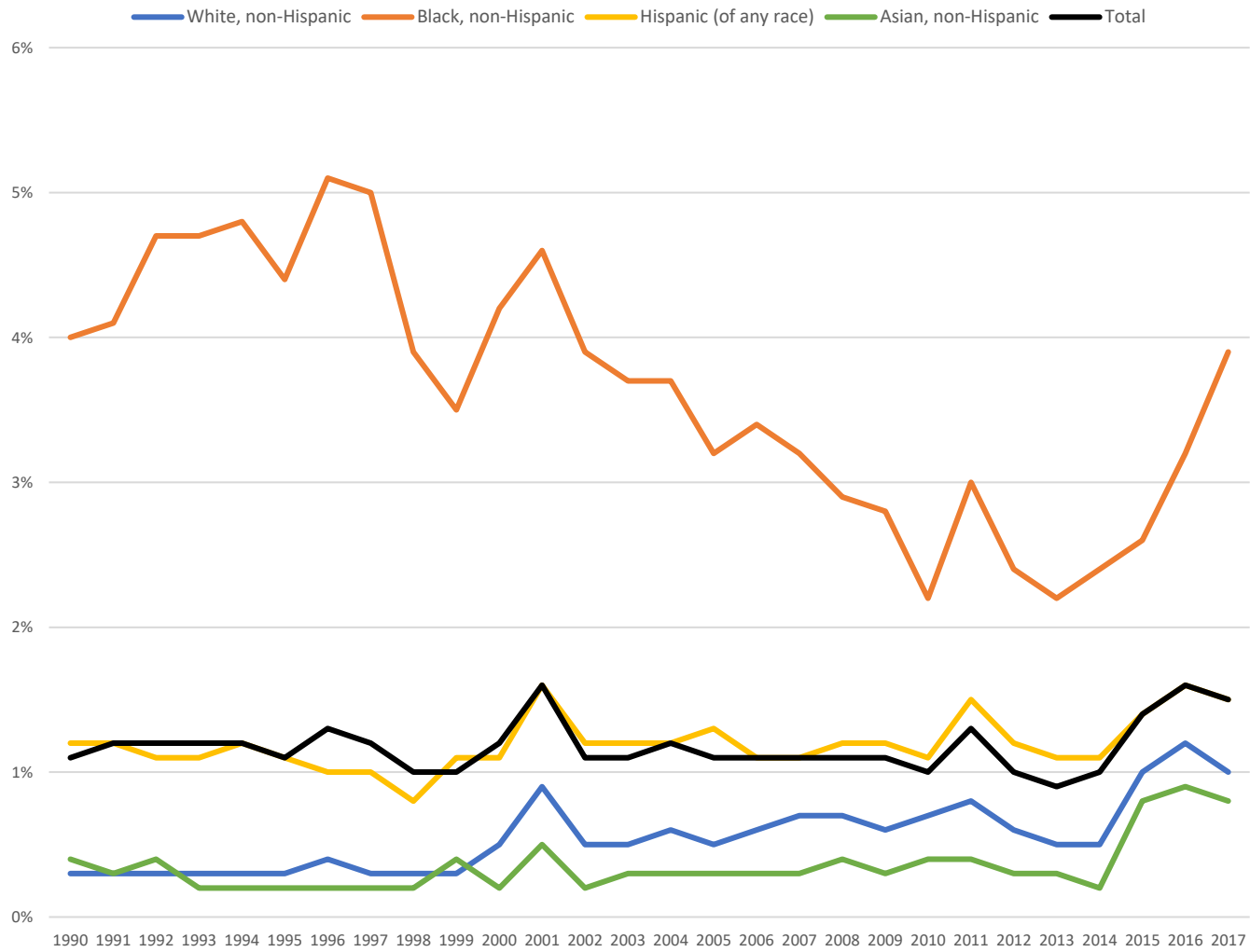


Source: NJ Birth Certificate Database, Office of Vital Statistics and Registry, NJ DOH

*Initiation of prenatal care self-report as within 13 weeks on BC

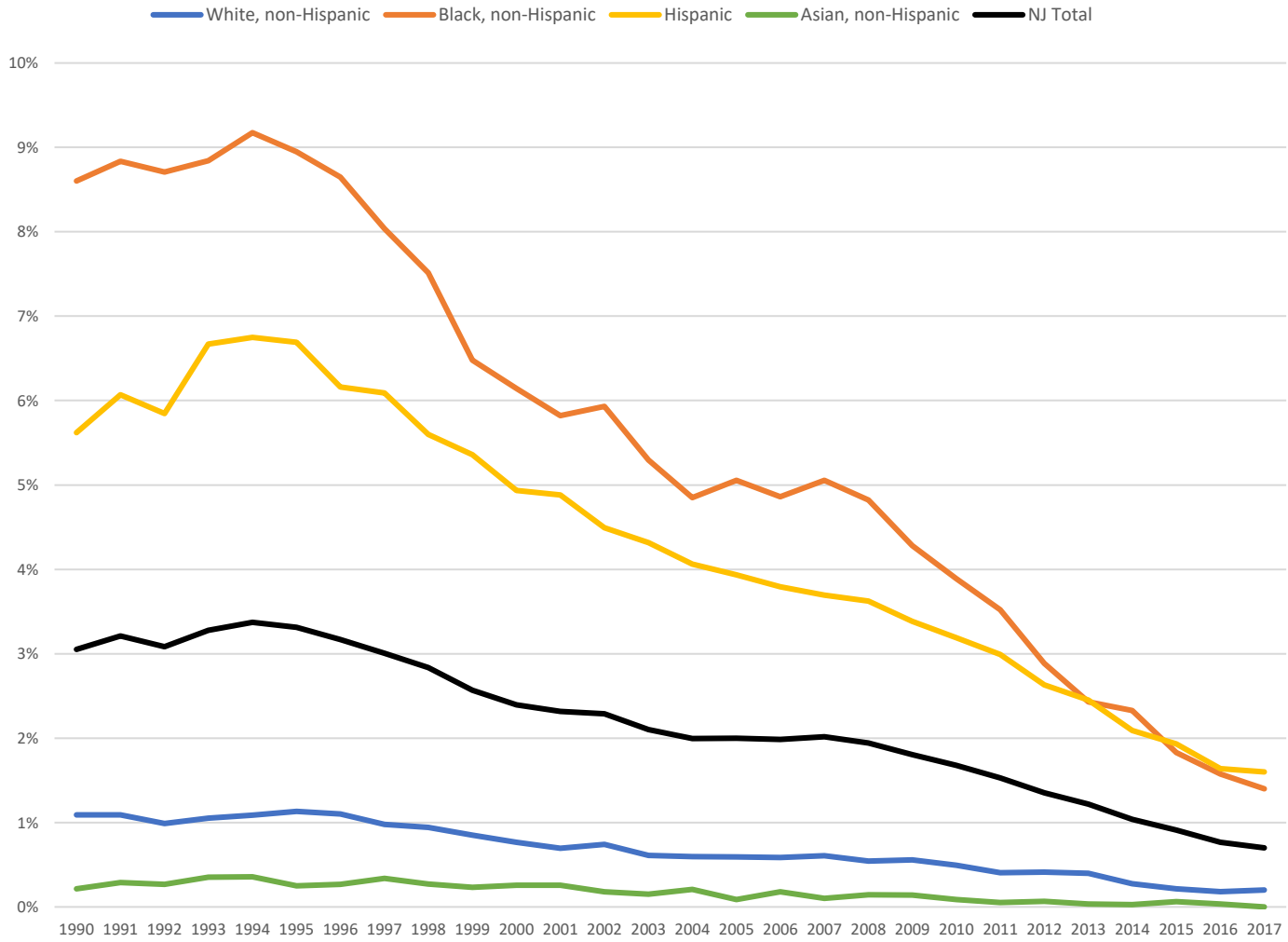
Race/ethnic groups - White, non-Hispanic; Black, non-Hispanic; Hispanic; Asian, non-Hispanic

New Jersey No Prenatal Care by Race/Ethnicity*



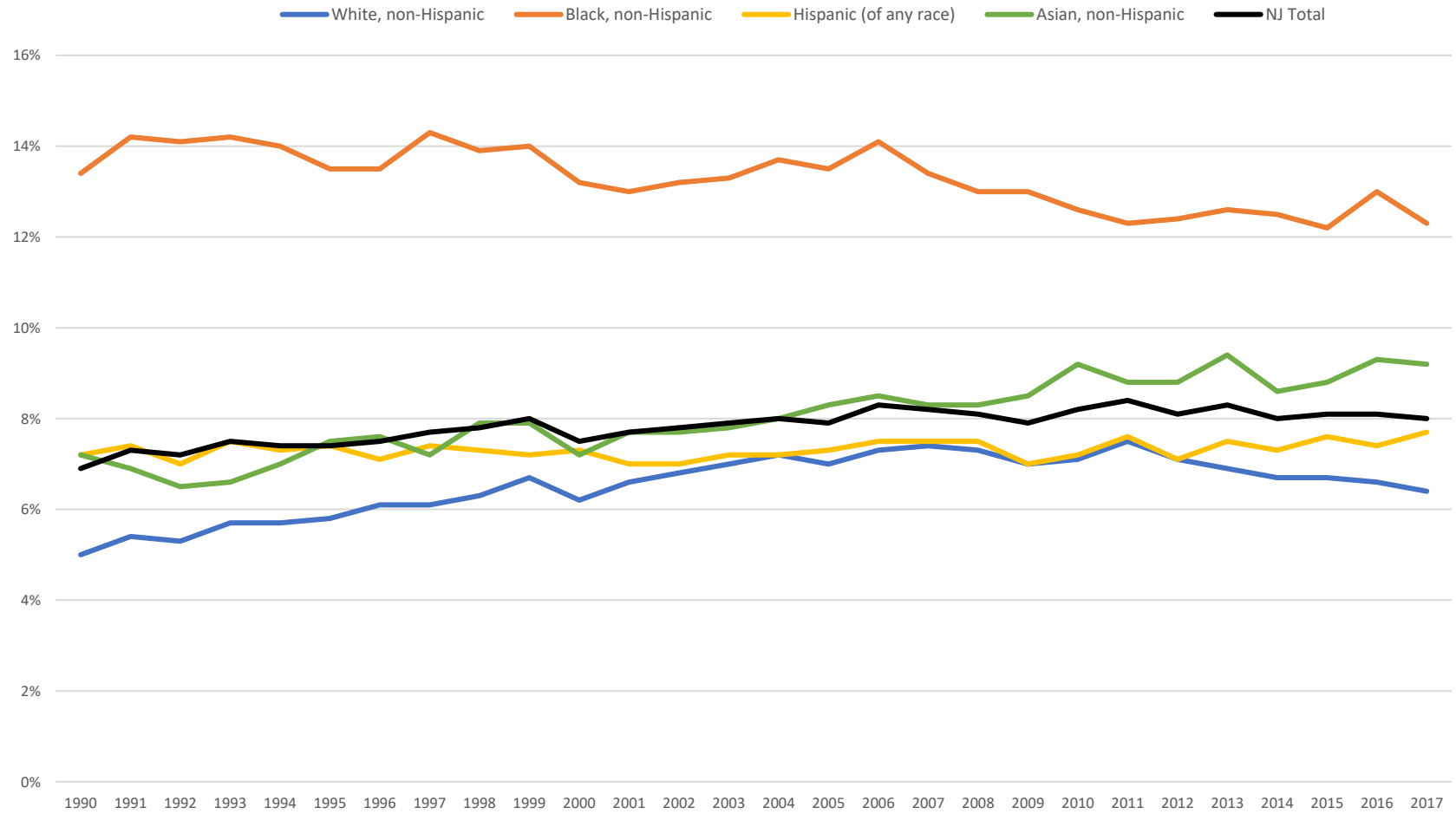
Source: NJ Birth Certificate Database, Office of Vital Statistics and Registry, NJ DOH
 *Source of prenatal care recorded as none
 Race/ethnic groups - White, non-Hispanic; Black, non-Hispanic; Hispanic; Asian, non-Hispanic

New Jersey Teen Births (<18 years) by Race/Ethnicity*



Source: NJ Birth Certificate Database, Office of Vital Statistics and Registry, NJ DOH
 *Live births to mothers <18 years old per 100 births
 Racial/ethnic groups - White, non-Hispanic; Black, non-Hispanic; Hispanic; Asian, non-Hispanic

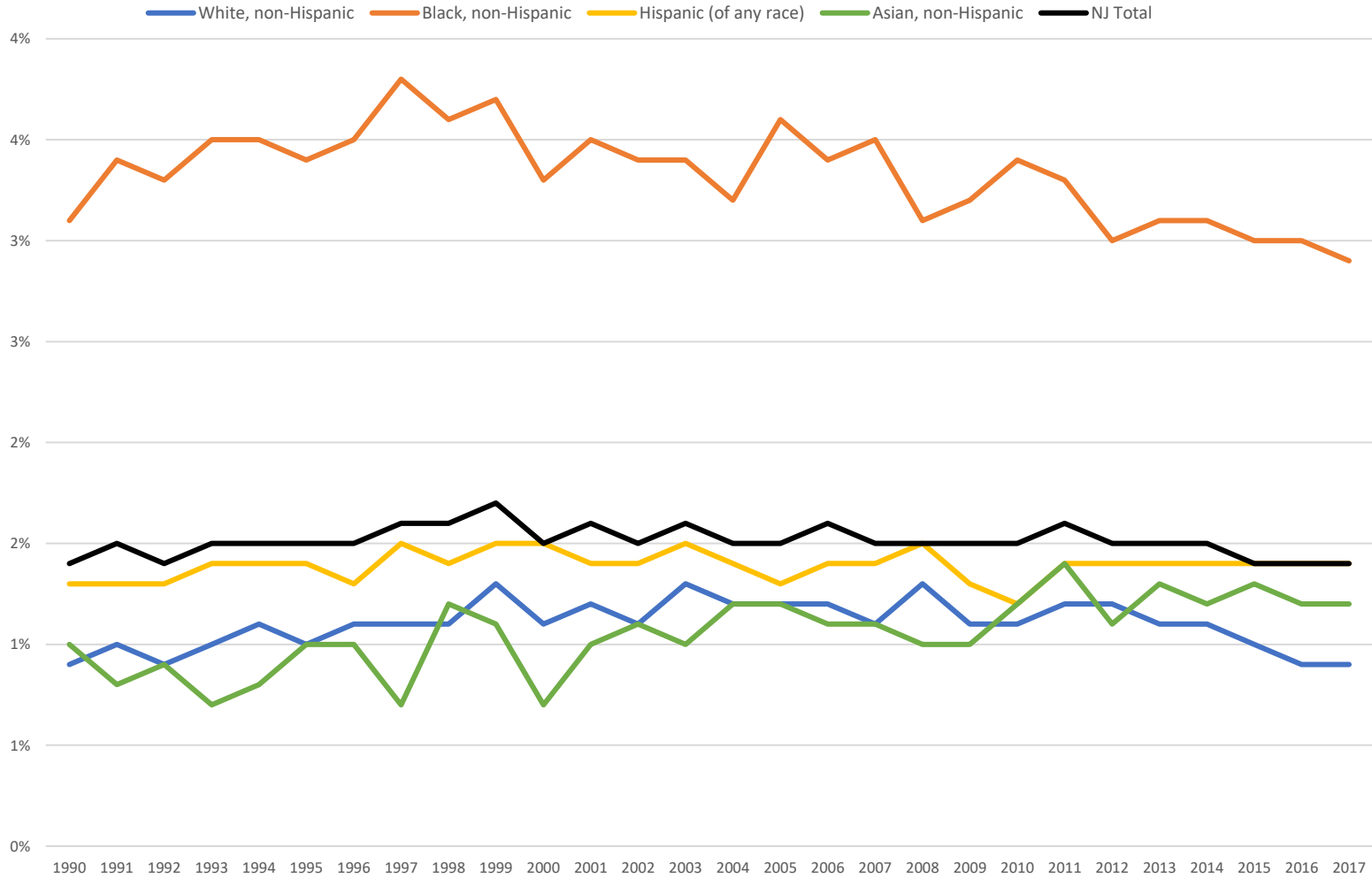
New Jersey Low Birthweight by Race/Ethnicity*



Source: NJ Birth Certificate Database, Office of Vital Statistics and Registry, NJ DOH

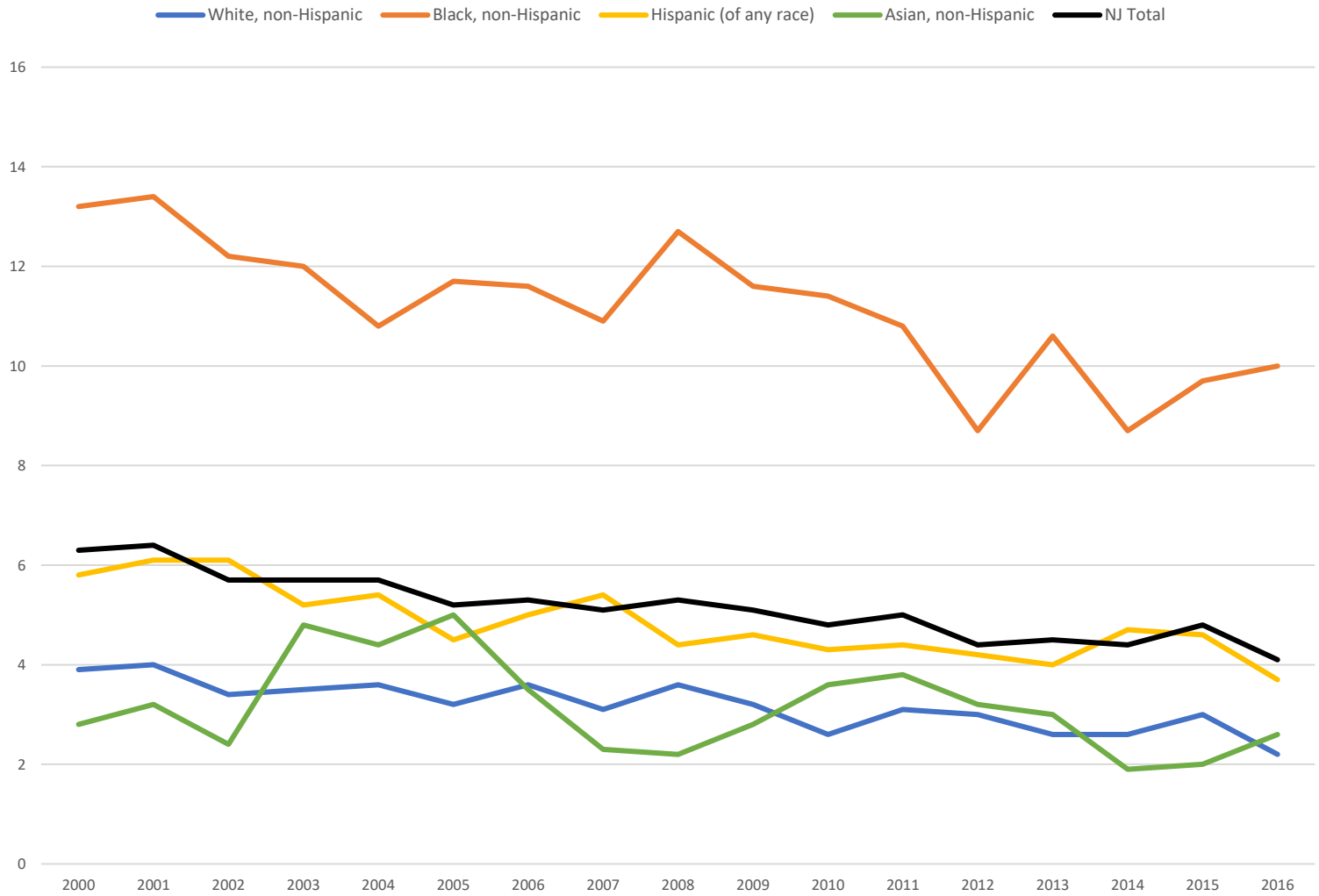
*Low birthweight= birthweight <2,500 grams

New Jersey Very Low Birthweight by Race/Ethnicity*



Source: NJ Birth Certificate Database, Office of Vital Statistics and Registry, NJ DOH
 *Very Low Birthweight = birthweight <1,500 grams

New Jersey Infant Mortality Rates*

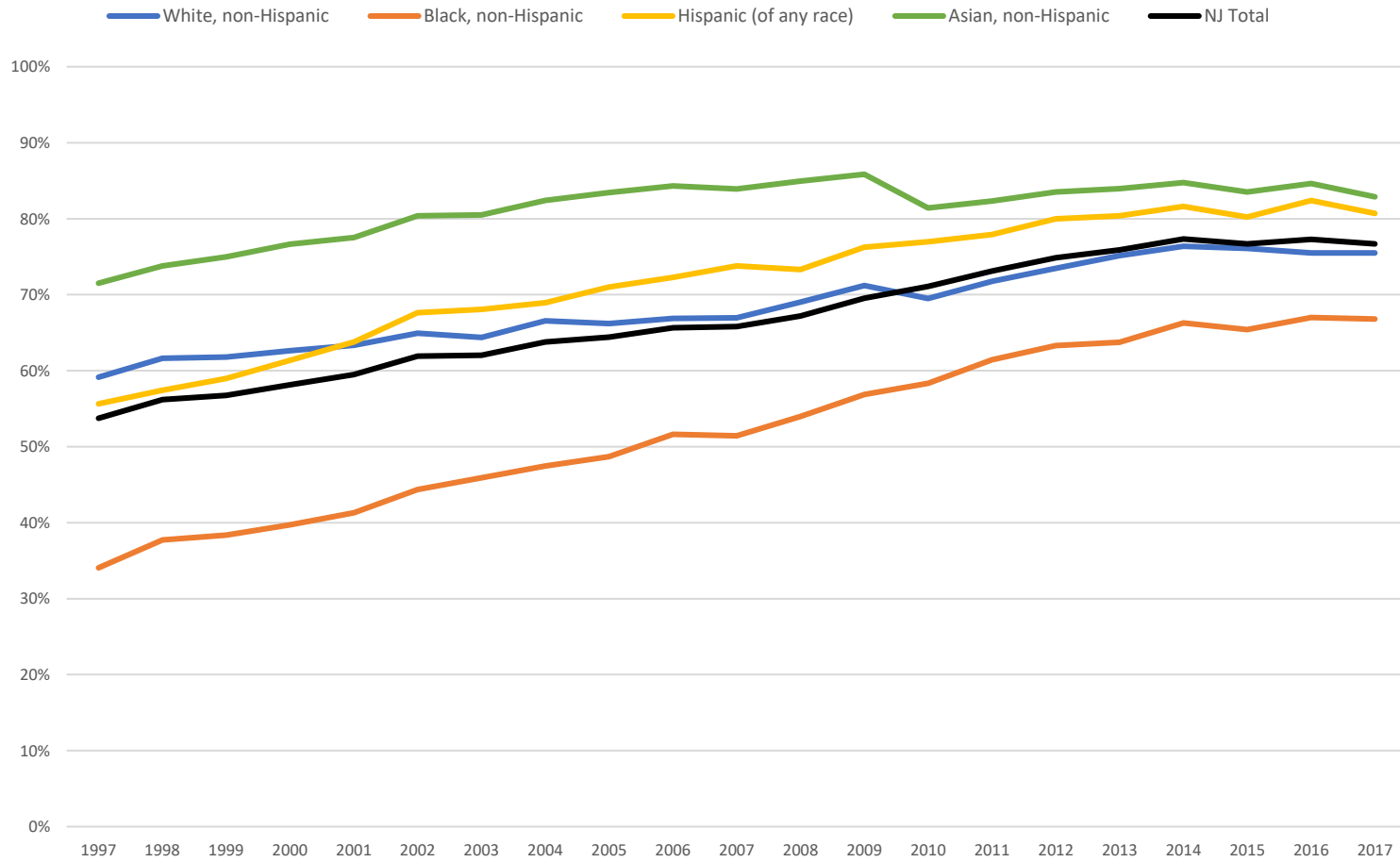


Source: NJ Birth and Death Certificate Databases, Office of Vital Statistics and Registry, NJ DOH

*Infant death certificates and corresponding birth certificates are matched by the Center for Health Statistics, NJ DOH

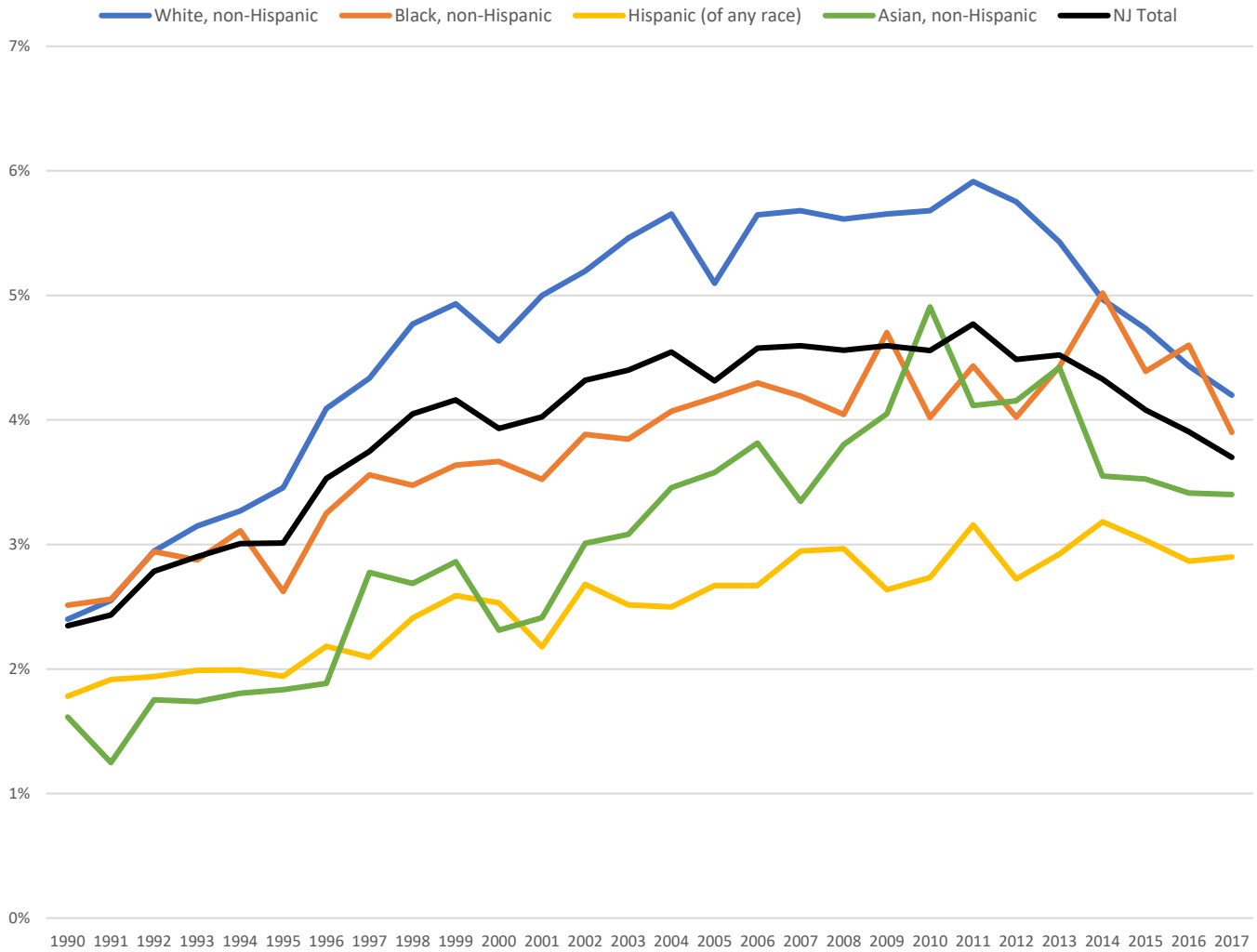
Race/ethnicity groups - White, non-Hispanic; Black, non-Hispanic; Hispanic; Asian, non-Hispanic

New Jersey Any Breastfeeding Rates by Race/Ethnicity*



Source: NJ Birth Certificate Database, Office of Vital Statistics and Registry, NJ DOH
*Any Breastfeeding Rates = Exclusive breastfeeding or Combination feeding prior to newborn discharge
Race/ethnic group - White, non-Hispanic; Black, non-Hispanic; Hispanic; Asian, non-Hispanic

New Jersey Multiple Birth Rate by Race/Ethnicity*



Source: NJ Birth Certificate Database, Office of Vital Statistics and Registry, NJ DOH
 *Multiple birth rate = Percentage of higher order births (>1)
 Race/ethnic groups - White, non-Hispanic; Black, non-Hispanic; Hispanic; Asian, non-Hispanic