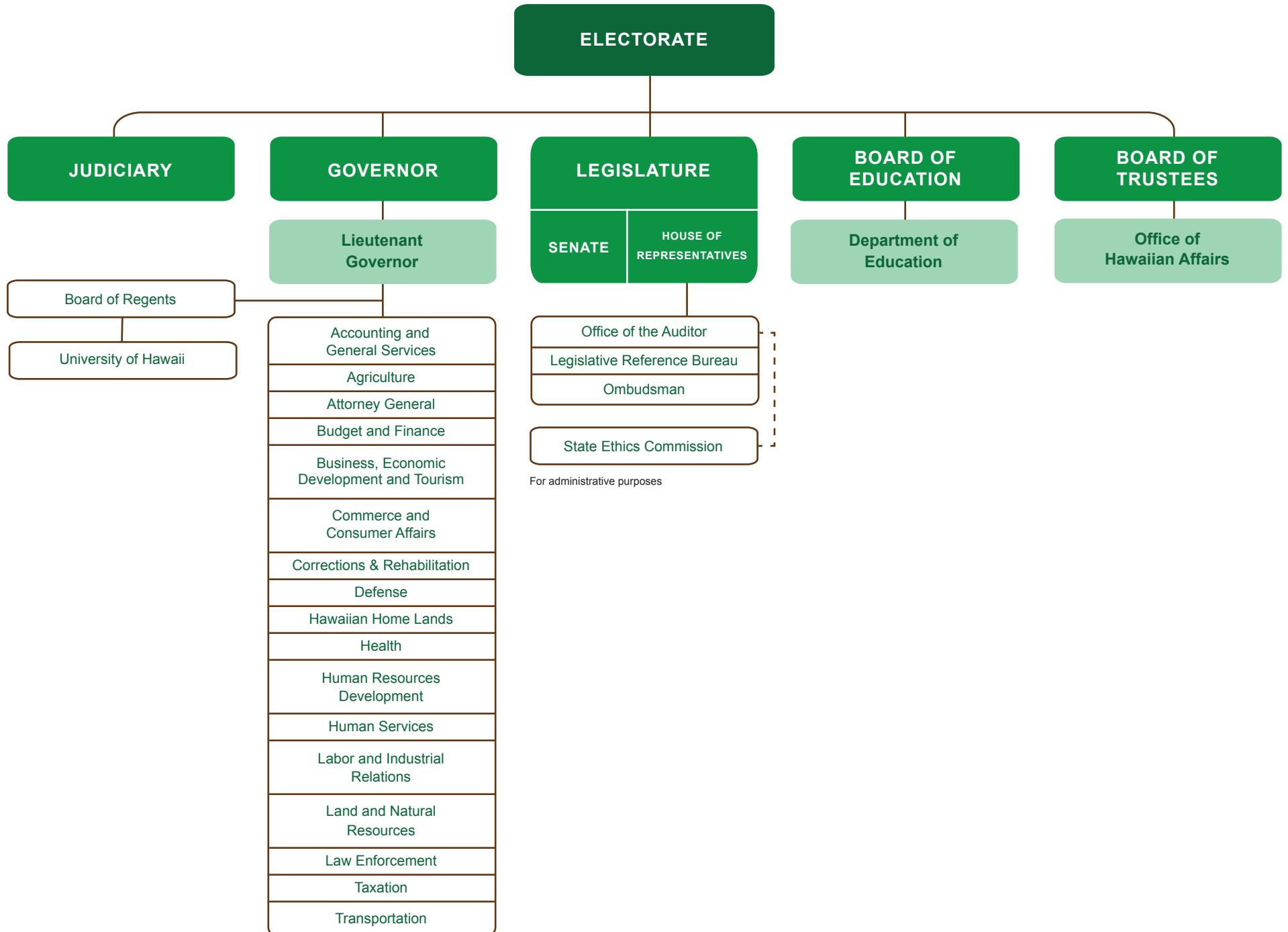
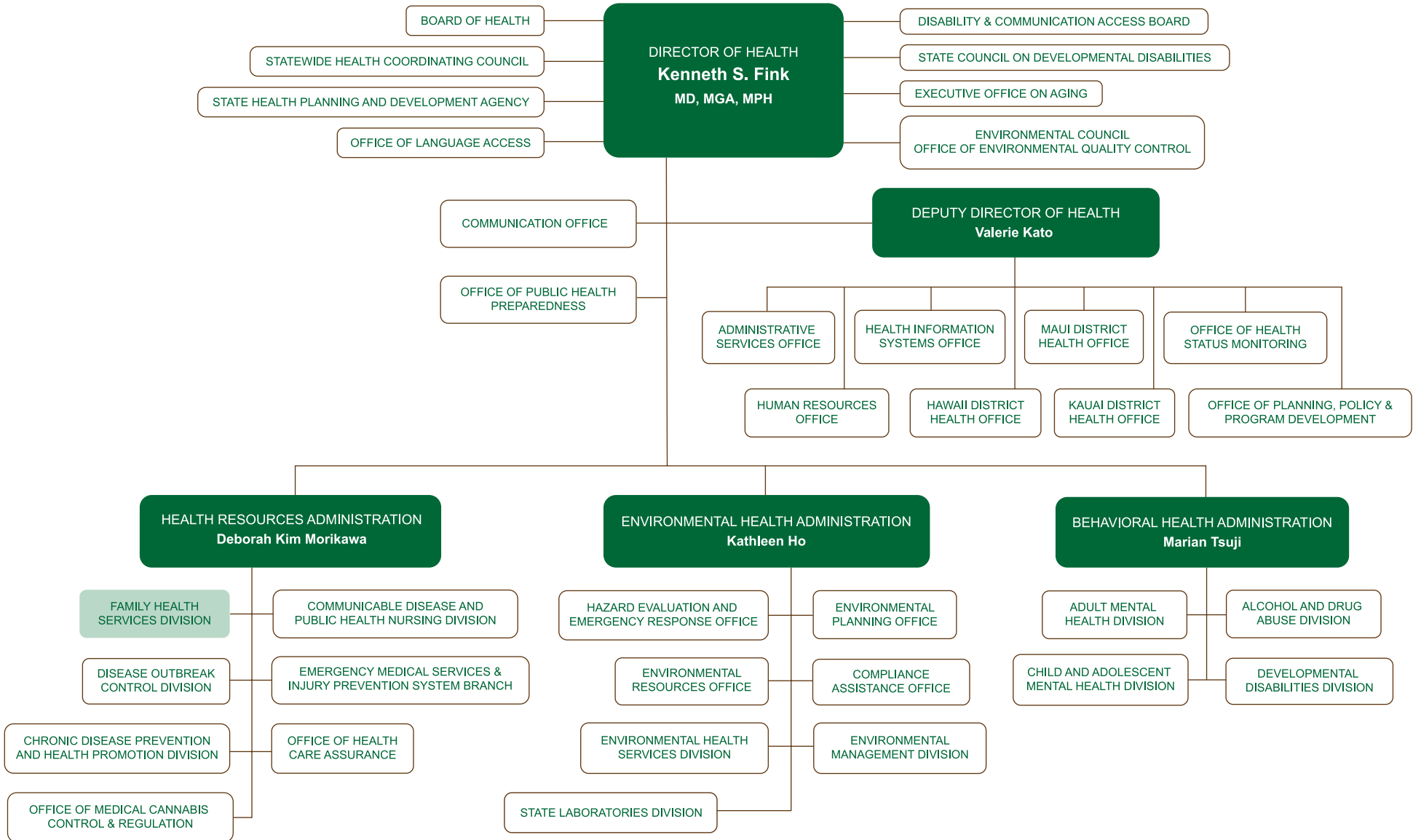


Hawaii State Government

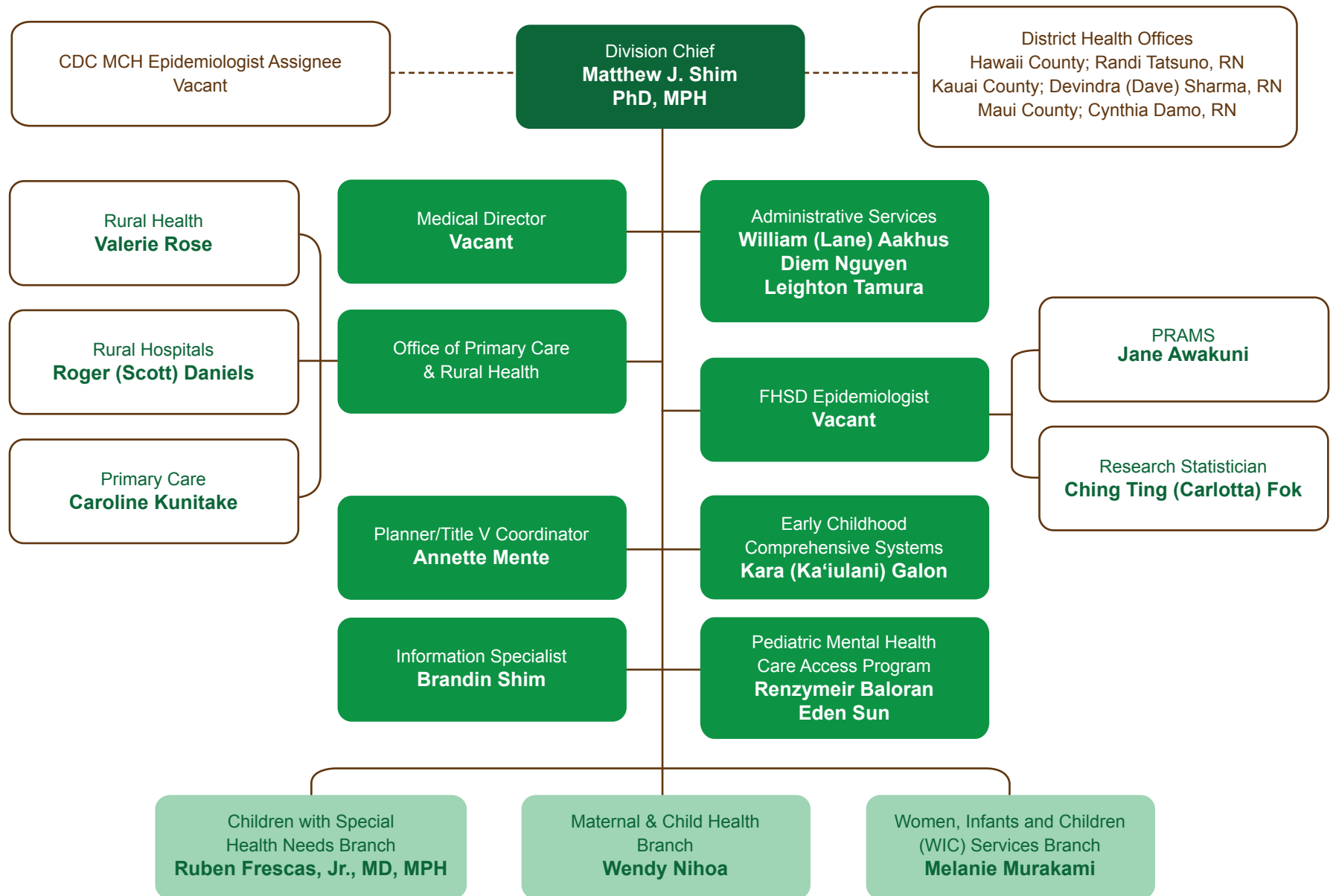




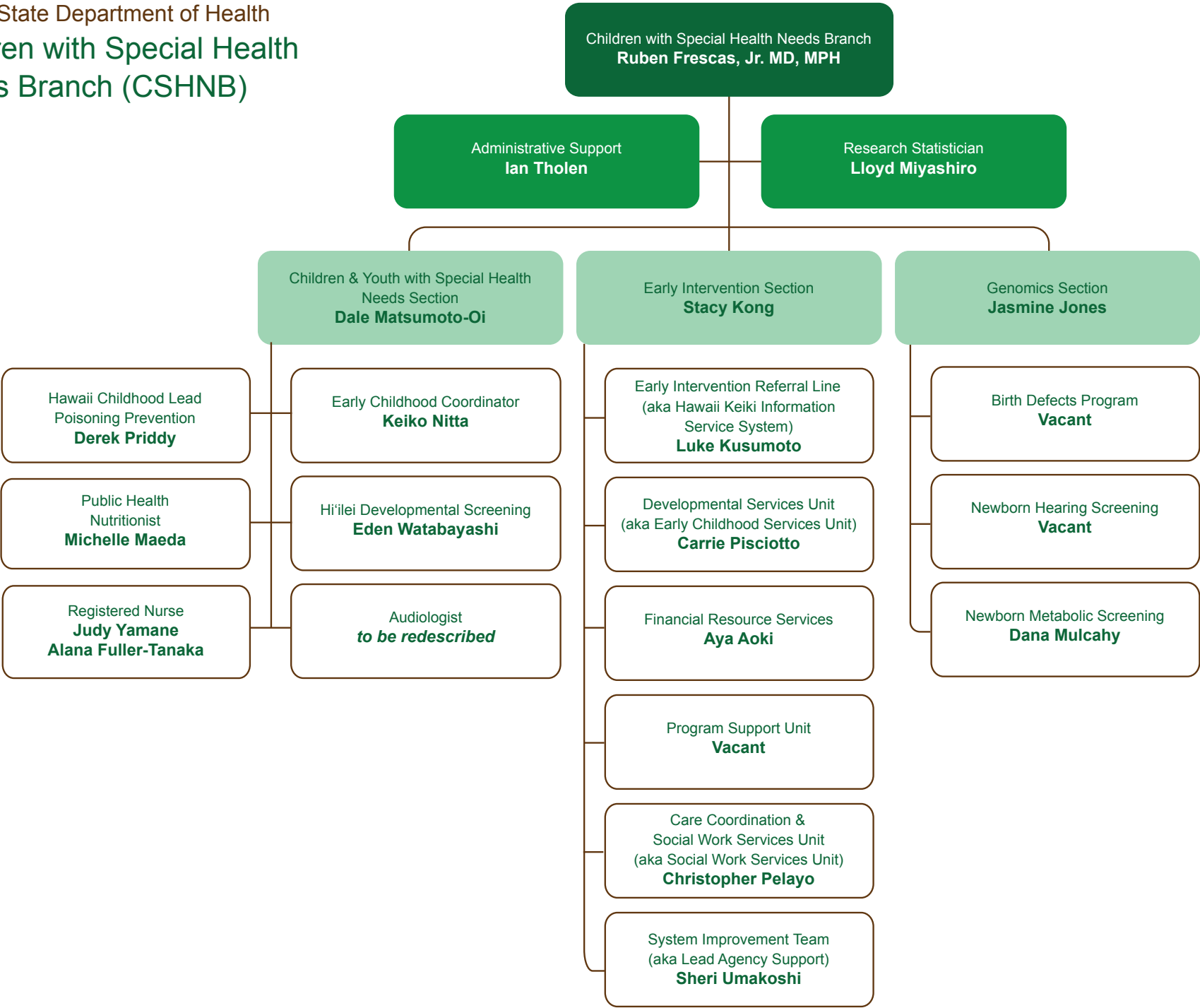
Hawaii State Department of Health



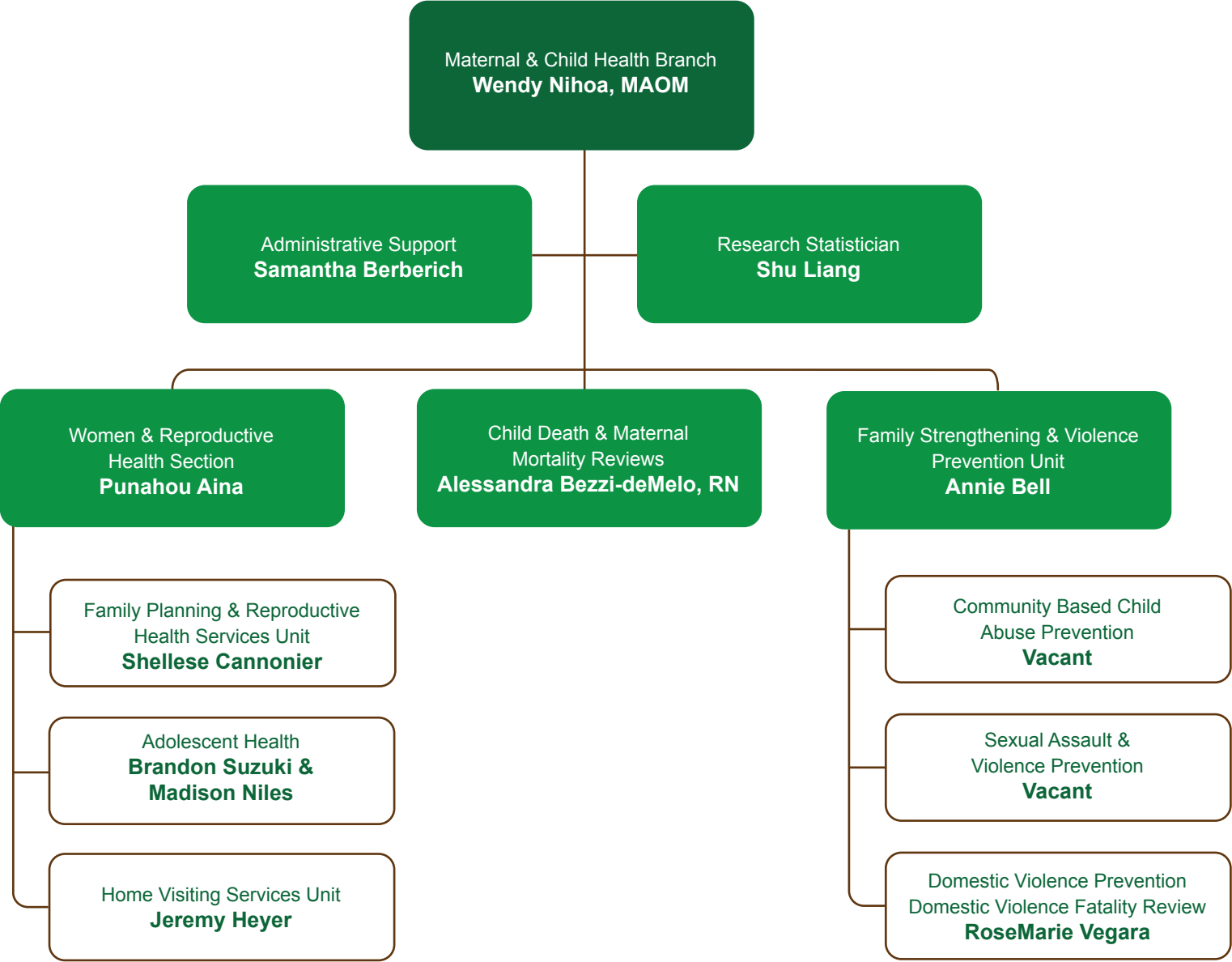
Hawaii State Department of Health
Family Health Services Division (FHSD)



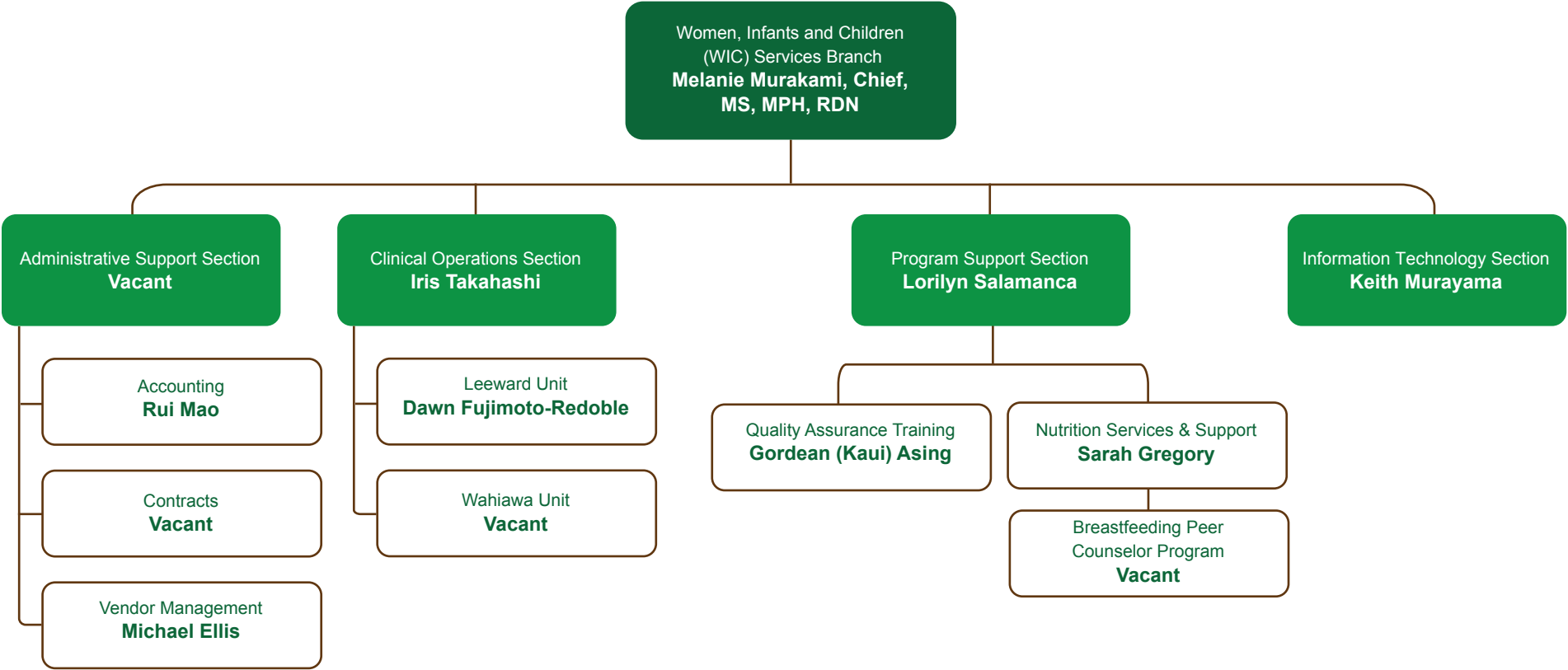
Hawaii State Department of Health
Children with Special Health
Needs Branch (CSHNB)

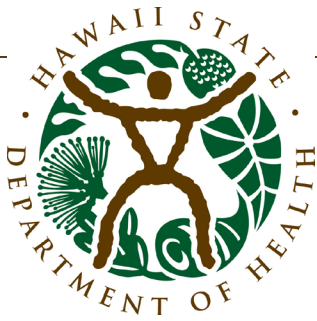


Hawaii State Department of Health
Maternal & Child Health Branch (MCHB)



Hawaii State Department of Health
Women, Infants and Children Services Branch (WIC)





Family Health Services Division

PURPOSE

Information in this handout serves as a reference document on Department of Health (DOH) Family Health Services Division (FHSD).

OVERVIEW of Family Health Services Division

FHSD is the state Maternal and Child Health agency. It falls within the Health Resources Administration within the DOH. FHSD is committed to improving the health of women, infants, children including those with special health care needs, and families. FHSD works to promote health and well-being, with health equity, social determinants of health, and multi-generational approaches. FHSD has three branches – Maternal and Child Health, Children with Special Health Needs, and Women, Infants & Children (WIC) Services.

FHSD Background Information:

- 30 Programs, 18 Grants, ~150 contracts
- 265 Full Time Employee (FTE) Positions
- \$95M Budget (FY 2024): 47% federal funds, 33% state funds, 20% special and other funds



Family Health Services Division
Hawaii, Kauai, Maui District Health Offices

DIVISION ADMINISTRATION	MATERNAL AND CHILD HEALTH BRANCH	CHILDREN WITH SPECIAL HEALTH NEEDS BRANCH	WOMEN, INFANTS AND CHILDREN SERVICES BRANCH
<ul style="list-style-type: none">• Community Health Services• Early Childhood Comprehensive Systems• Medicare Rural Hospital Flexibility• Oral Health• Pediatric Mental Health Care Access Grant• Pregnancy Risk Assessment Monitoring System (PRAMS)• Small Hospital Improvement• State Primary Care• State Rural Health• Title V Maternal and Child Health	<ul style="list-style-type: none">• Adolescent Wellness• Child Abuse and Neglect, Domestic and Sexual Assault Violence Prevention• Child Death Review• Domestic Violence Fatality Review• Family Planning• Hawaii Home Visiting• Maternal Mortality Review	<ul style="list-style-type: none">• Birth Defects• Childhood Lead Poisoning Prevention• Children and Youth with Special Health Needs• Early Childhood• Early Intervention• Genetic Services• Hi'iilei Developmental Screening• Newborn Hearing Screening• Newborn Metabolic Screening• Project LAUNCH (Linking Actions for Unmet Needs in Children's Health)	<ul style="list-style-type: none">• Breastfeeding Peer Counseling• Special Supplemental Nutrition Program for Women, Infants & Children (WIC)

Family Health Services Division



COMMUNITY HEALTH SERVICES: Funded by the Community Health Center Special Fund (from state tobacco taxes), these contractual services improve access to health care for medically under-served populations through Federally Qualified Health Centers (FQHC). The array of safety-net services includes clinical primary care, behavioral, dental, and pharmacy for those who are under/uninsured.

EARLY CHILDHOOD COMPREHENSIVE SYSTEMS: This program is using the collective impact model to strengthen, align, and sustain family-centered systems at the state and community levels that are equitable, sustainable, and comprehensive, using the health system as a key partner. These programs focus on the prenatal-to-age-3 (P-3) period, which is a critical window of opportunity for prevention and intervention. Early childhood experiences that nurture positive health and development—starting prenatally—have lifelong impacts on overall health and well-being.

MEDICARE RURAL HOSPITAL FLEXIBILITY PROGRAM (FLEX): Funded by the federal Office of Rural Health Policy, this program provides strategic planning activities with an emphasis on quality and financial and operational improvements for the state's Critical Access Hospitals (CAH). This assists small rural hospitals to improve access to health services in rural communities via data tracking, analysis, and benchmarking toward quality improvement. Contracts for rural hospitals provide essential access to inpatient, outpatient, and emergency medical services in rural communities.

ORAL HEALTH: Hawaii is working to rebuild the state's dental public health infrastructure (statewide leadership, data surveillance and assessment, coalition building/partnerships, planning, evaluation, and communications). Previously funded by the Centers for Disease Control and Prevention, Oral Health State Infrastructure grant, we continue to seek state-level or federal funding for the program.

PEDIATRIC MENTAL HEALTH CARE ACCESS (PMHCA) GRANT: The PMHCA grant was awarded in 2021 to establish a state system of behavioral health tele-consultation and care coordination for children, especially those in under-served areas and rural communities. Overall, the goal is to promote integration of primary care and behavioral health in order to better services children, youth, and their families in their communities.

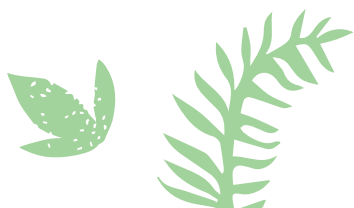
PREGNANCY RISK ASSESSMENT MONITORING SYSTEM (PRAMS): Funded by the federal Centers for Disease Control and prevention, this project is a population-based surveillance system to identify and monitor maternal experiences, attitudes, and behaviors from preconception, through pregnancy and into the inter-conception period.

SMALL HOSPITAL IMPROVEMENT PROGRAM (SHIP): Funded by the Federal Office of Rural Health Policy, this program supports rural hospitals with 49 beds or fewer, allowing them to become joint accountable care organizations (ACOs), participate in shared savings programs, purchase health information technology, equipment, and training to comply with quality improvement activities such as advancing patient care information, promoting interoperability, and payment bundling.

STATE PRIMARY CARE OFFICE (PCO): Funded by the federal Bureau of Health Workforce, this program designates statewide health professional shortage areas which increase eligibility of skilled health care professionals for federal and state scholarships and loan repayments in exchange for a commitment to work in needy communities. This makes it possible for health care providers to recruit and retain health professionals, thereby improving the health of underserved and vulnerable populations.

STATE OFFICE OF RURAL HEALTH (SORH): Funded by the federal Office of Rural Health Policy, this program creates a focal point for rural health issues within each state, linking communities with state, federal and non-profit resources and helping to find long-term solutions. Program goals include educating providers about new health care initiatives, collecting and disseminating data and resources, and supporting workforce recruitment and retention.

TITLE V MATERNAL AND CHILD HEALTH (MCH) BLOCK GRANT PROGRAM: This is a federal-state partnership of Title V of the Social Security Act to improve maternal and child health throughout the nation and to support comprehensive public health systems and services in the state. Funds strengthen the state MCH core public health functions (assessment, assurance, and policy development).



Maternal and Child Health Branch

Maternal and Child Health Branch administers a statewide system of services to reduce health disparities for women, children and families of Hawaii. MCHB programs provide core public health services.

ADOLESCENT WELLNESS: spans across the physical, mental and social emotional aspects of adolescents and young adults 10 to 24 years of age. Concentration on sexual health, positive youth development and transitioning into adulthood.

CHILD ABUSE AND NEGLECT, DOMESTIC AND SEXUAL VIOLENCE PREVENTION: committed to the primary prevention of all forms of violence and stopping violence before it begins so that all people, families, and communities are safe, healthy, and free of violence. The Family Strengthening & Violence Prevention Unit provides programs statewide for the prevention of child abuse and neglect, sexual violence and domestic violence and support for parents.

CHILD DEATH REVIEW: statewide surveillance system for child deaths from ages 0-18 years to reduce preventable deaths to infants, children and youth through multidisciplinary interagency reviews.

DOMESTIC VIOLENCE FATALITY REVIEW: the purpose of the child, maternal, and domestic violence fatality reviews is to reduce the incidence of preventable deaths in our community. The fatality review process analyzes systems responses by community agencies and other organizations involved.

FAMILY PLANNING & PERINATAL SUPPORT SERVICES: provides access to reproductive health and perinatal support services for the uninsured and under-insured. Assists individuals in determining the number and spacing of their children and promotes positive birth outcomes and healthy families. Education, counseling and medical services available through federal and state funded clinical programs.

HAWAII HOME VISITING: provides comprehensive Early Identification (EID) with birthing hospitals, physicians, WIC clinics and Community Health Centers to refer expectant families and families of newborns to home visitation services to improve birth, health and development outcomes and reduce health disparities for high risk families in communities at greatest risk (Oahu: Downtown-Kalihi, Ewa, Kalaeloa, Waianae. Hawaii: Hilo-Puna, North Kona, South Kona. Maui: Wailuku, Kahului, Kihei. Lanai and Molokai. Kauai: Lihue, Puhi-Hanamaulu.) The program is funded through a partnership with the State of Hawaii and the federal Maternal Infant Early Childhood Home Visiting (MIECHV) grant.

MATERNAL MORTALITY REVIEW: a multidisciplinary review of maternal deaths intended to prevent future deaths occurring during pregnancy and within one year of giving birth.



Children with Special Health Needs Branch (CSHNB)

Children with Special Health Needs Branch (CSHNB) is working to assure that all children and youth with special health care needs (CSHCN) will reach optimal health, growth, and development.

BIRTH DEFECTS: provides population-based surveillance and education for birth defects in Hawaii and monitors major structural and genetic birth defects that adversely affect health and development.

CHILDHOOD LEAD POISONING PREVENTION: reduces children's exposure to lead by strengthening blood lead testing and surveillance, identifying and linking lead-exposed children to services, and improving population-based interventions. Program is funded by the Centers for Disease Control and Prevention (CDC).

CHILDREN AND YOUTH WITH SPECIAL HEALTH NEEDS: provides assistance with service coordination, social work, nutrition, and other services for children with special health care needs age 0-21 years with chronic medical conditions. It serves children who have or may have long-term or chronic health conditions that require specialized medical care and their families.

EARLY CHILDHOOD: focuses on systems-building to promote a comprehensive network of services and programs that helps promote children with special health needs and children who are at risk for chronic physical, developmental, behavioral, or emotional conditions to reach their optimal developmental health.

EARLY INTERVENTION SECTION (EIS): provides early intervention services for eligible children from birth to three years old with developmental delay or at biological risk, as mandated by Part C of the Individuals with Disabilities Education Act (IDEA). Services include care coordination; family training, counseling, home visiting; occupational therapy; physical therapy; psychology; social work; special instruction; and speech therapy. Parents/care-givers are coached on how to support the child's development within the child's daily routines and activities.

GENETICS SERVICES: provides information and education about topics in genetics, coordinates genetic activities, and supports clinical genetic services.

HI'ILEI DEVELOPMENTAL SCREENING: is a free resource for parents of children from birth to 5 years old. Program provides developmental screening via a mail or online screen; activities to help a child develop; referrals for developmental concerns; and information about state/community resources.

NEWBORN HEARING SCREENING: provides newborn hearing screening for babies as required by Hawaii state law to identify hearing loss early so that children can receive timely early intervention services.

NEWBORN METABOLIC SCREENING: provides newborn blood spot testing for babies as required by Hawaii state law. The tests help detect rare disorders that can cause serious health, developmental problems and even death if not treated early.

PROJECT LAUNCH (Linking Actions for Unmet Needs in Children's Health): promotes the wellness of young children, birth to eight years of age, by building capacities of adults in the lives of young children to promote healthy social emotional development; to prevent mental, emotional, and behavioral disorders; and to identify/address behavioral concerns before they develop into serious emotional disturbances.

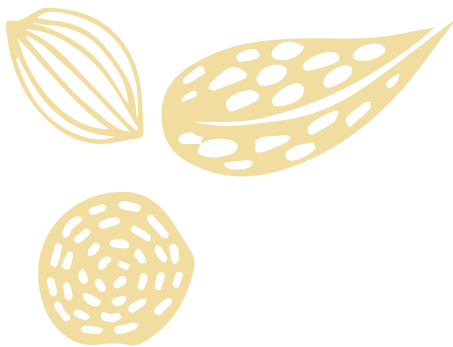


Women Infants and Children (WIC) SERVICES BRANCH

WIC's mission is to safeguard the health of low-income women, infants and children up to age 5 who are at nutritional risk.

Women Infants and Children (WIC): The Special Supplemental Nutrition Program for Women, Infants and Children (WIC) is a federally funded program that provides Hawaii residents with nourishing supplemental foods, nutrition education, breastfeeding promotion and health and social service referrals. The participants of WIC are either pregnant, breastfeeding, or postpartum women, and infants and children under age five who meet income guidelines and have a medical or nutritional risk.

Hawaii WIC's Breastfeeding Peer Counseling Program--Hi'ilaupoli: Hi'ilaupoli means, come together to support breastfeeding. This program is an adjunct to WIC services. Our Peer Counselors are paraprofessionals recruited and hired from WIC's target population, are available in or outside the WIC environment and offer basic breast-feeding support, encouragement and guidance to WIC mothers.





Family Health Services Division Programs By Title V Population Health Domains

WOMEN/MATERNAL HEALTH

Family Planning
Hawaii Home Visiting Network*
Maternal Mortality Review*
Parenting Support Program*
PRAMS*
Sexual Violence Prevention*
WIC Services*

PERINATAL/INFANT HEALTH

Birth Defects Program
Breastfeeding
Child Death Review
Children & Youth w/ Special Needs*
Early Childhood Comp. Systems*
Early Intervention*
Family Planning
Hawaii Home Visiting Network*
Maternal Mortality Review*
Newborn Hearing Screening
Newborn Metabolic Screening
Parenting Support Program*
PRAMS*
WIC Services*

CHILD HEALTH

Child Abuse Prevention
Child Death Review
Child Lead Poisoning Prevention
Children & Youth w/ Special Needs*
Early Childhood Comp. Systems*
Early Intervention*
Hawaii Home Visiting Network*
Parenting Support Program*
Sexual Violence Prevention*
WIC Services*

ADOLESCENT HEALTH

Adolescent Program
Child Death Review
Children & Youth w/ Special Needs*
Parenting Support Program*
Sexual Violence*
Teen Pregnancy Prevention

CHILDREN & YOUTH WITH SPECIAL HEALTH CARE NEEDS

Birth Defects Program*
Childhood Lead Poisoning Prevention*
Children and Youth with Special Health Needs Section*
Early Childhood*
Early Intervention Services*
Hi'iilei Developmental Screening
Newborn Hearing Screening*
Newborn Metabolic Screening*

CROSS-CUTTING OR LIFE COURSE

Critical Access Hospitals
Domestic Violence (DV) Prevention & DV Fatality Review
Genetics Program
Hawaii, Maui, and Kauai District Health Offices
Oral Health Program
Pediatric Mental Health Care Access
Primary Care Office
Primary Care Uninsured/Under-insured Service Contracts
Rural Hospital Subsidy Contracts
State Office of Rural Health
State System Development Initiative
Title V MCH program

Preconception

Prenatal

Early Childhood

Childhood

Adolescence

Adulthood

LIFESPAN

*LISTED IN SEVERAL DOMAINS