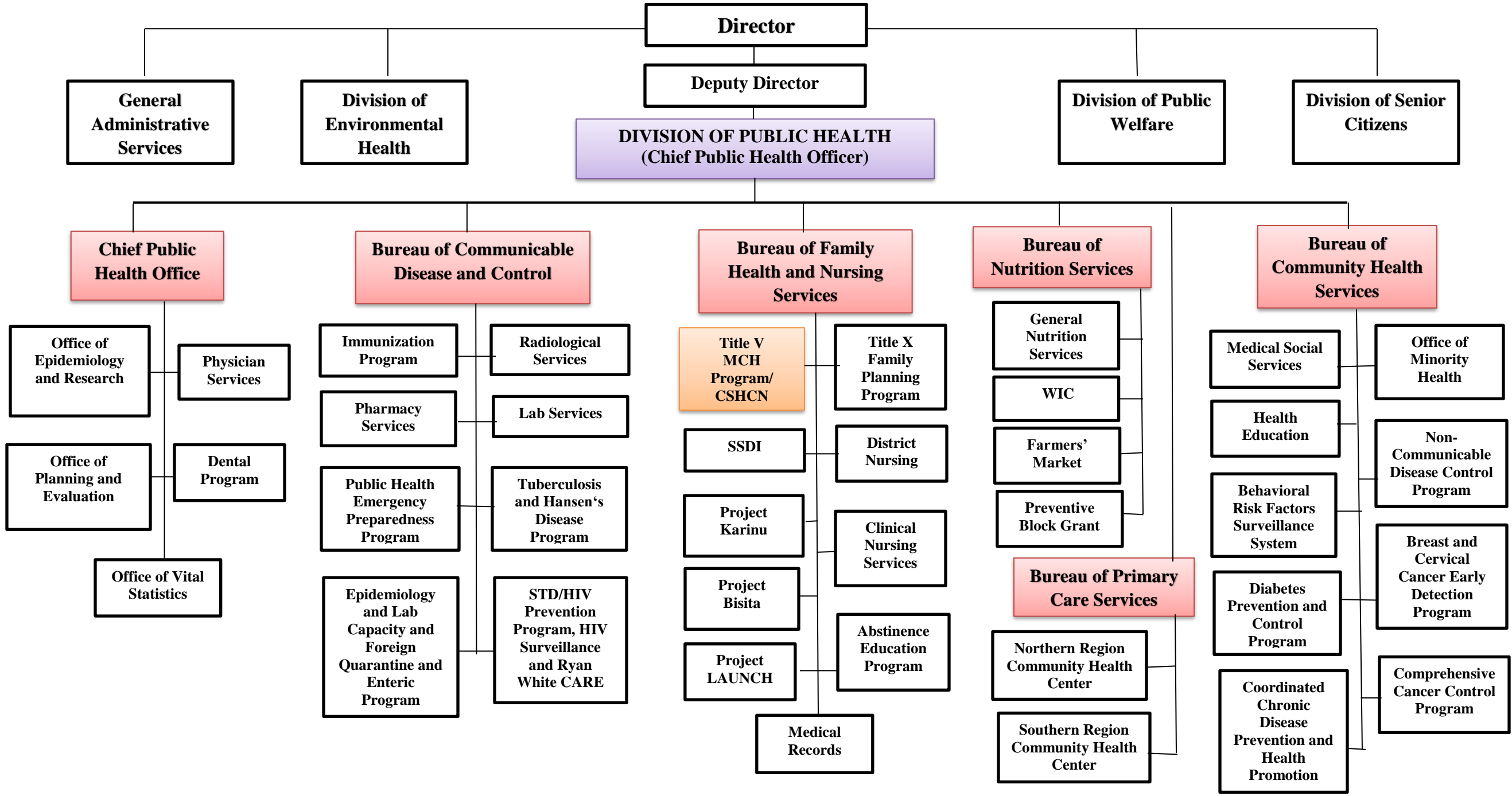


GOVERNMENT OF GUAM
DEPARTMENT OF PUBLIC HEALTH & SOCIAL SERVICES
DIVISION OF PUBLIC HEALTH
2017 ORGANIZATIONAL CHART



**DEPARTMENT OF PUBLIC HEALTH & SOCIAL SERVICES
BUREAU OF FAMILY HEALTH AND NURSING SERVICES
MATERNAL AND CHILD HEALTH PROGRAM
2017 ORGANIZATIONAL CHART**

DIVISION OF PUBLIC HEALTH
Dr. Suzanne Kaneshiro
Chief Public Health Officer

Bureau of Family Health and Nursing Services
Margarita Gay
Administrator

Margaret Bell
Program Coordinator IV
(60%)

Relida Sumaylo
Community Health Nurse
Supervisor (10%)

Marilyn Dela Cruz
Nurse Aide II
(60%)

Cherisse Santiago
Social Worker III
(60%)

Julie Reyes
Nurse Aide II
(60%)

Sherill Tinio
Community Health Nurse
(10%)

Marieta Inciong
Pharmacy Technician
(60%)

Diana Santos
Social Worker III
(60%)

Ester Gutierrez
Nurse Aide II
(60%)

Leonel Arcangel
Community Health Nurse
(50%)

Zenaida Okada
Administrative Assistant
(60%)

Peter Aguon
Medical Records Clerk
(60%)