

Department of Health and Human Services
 Division of Public Health Services
 Bureau of Population Health and Community Services
 Maternal and Child Health Section

Rhonda Siegel
 Administrator II
 #14792 LG 29

Ann Marie Mercuri
 Quality Assurance/Quality Improvement Nurse Consultant
 Public Health Nurse Consultant
 #42911 LG 25

Sarah Pigsley
 Executive Secretary
 #14678 LG 11

Shari Campbell
 Title V/MCH Program Analyst
 Program Evaluation Specialist
 #14666 LG 21

David Laflamme
 Epidemiologist
 Contractor

Child Health & Infant Screening
 Audrey Knight - Child Health Nurse Consultant
 Public Health Nurse Consultant
 #14743 LG 25

Data & Decision Support
 Paulette Valliere - SSDI Program Planner
 Program Planner III
 42836 LG 25

EHDI/Newborn Hearing Screening Program
 Courtney Keane - NB Hearing Screening Prg Coord
 Program Specialist III
 #42904 LG 23

Sara Riordan
 PRAMS Project Coordinator
 Planning Analyst Data Systems
 43573 LG 24

Newborn Screening Program
 Linda Kincaid - Newborn Screening Prg Coord
 Public Health Nurse Coord
 #14735 LG 23

Misty Batchelder
 PRAMS Data Manager
 Program Specialist III
 TMPPT1882 LG 23 - .6 FTE

NBS & NBH Screening Program
 Ann Collins - Perinatal Nurse Coord.
 Public Health Nurse Coord.
 #14732 LG 23

Suzann Beauregard
 Birth Conditions Public Health Nurse Coordinator
 Public Health Nurse Coordinator
 9T2887 LG 23

Newborn Screening Program
 VACANT- Newborn Screening Program Specialist
 Program Specialist III
 #TMPPT1357 LG 23

Injury Prevention
 JoAnne Miles - Injury Prevention Program Manager
 Program Specialist IV
 #42909 LG 25

Young Families (HV/MIECHV)
 Aurelia Moran - Home Visiting Program Supervisor
 Supervisor V
 #42887 LG 26

Kathleen Mullin
 Planning Analyst Data Systems
 MCH/Injury Prevention Surveillance Analyst
 #19634 LG 24

HVNH
 Kristi Hart- HV NH Program Coordinator
 Program Specialist III
 #15582 LG 23

VACANT
 Opioid Overdose Surveillance Coordinator
 Planning Analyst/Data Systems
 9T2896 LG 24

HVNH
 Erica Proto -MIEC Evaluation Coordinator
 Program Planner II
 TMPPT2894 LG 21 - .4 FTE

Vacant
 MCH Program Assistant
 Program Assistant II
 #42908 LG 15 - .5 FTE

Vacant
 Home Visiting Data Specialist
 Systems Development Specialist III
 #9T2851 LG23

Women's Health
 VACANT - FP Program Specialist
 Program Specialist IV
 #19643 LG 25

Early Childhood Program
 Elizabeth Lawrence - Early Childhood Program Manager
 Program Specialist IV
 #42940 LG 25

Haley Johnston
 Family Planning Program Assistant
 Program Assistant II
 #42941 LG 15

Project LAUNCH
 VACANT - Young Child Wellness Advisor
 Health Promotion Advisor
 TMPPT4242 LG 23

Rhonda N. Silverman Siegel – MCH Section Administrator

EDUCATION

UNIVERSITY OF PENNSYLVANIA, Graduate School of Education, Philadelphia, Pennsylvania. Master of Science in Education. May 1986.

UNIVERSITY OF PENNSYLVANIA, Philadelphia, Pennsylvania.
Bachelor of Arts in the Biological Basis of Behavior, May 1984.
Concentration in Human and Animal Organisms.

TEMPLE UNIVERSITY, College of Health, Physical Education, Recreation, and Dance, Philadelphia, Pennsylvania.
Doctoral coursework in Health Education. September 1991 - May 1992.

PROFESSIONAL EXPERIENCE

NEW HAMPSHIRE DEPARTMENT OF HEALTH AND HUMAN SERVICES, Division of Public Health Services, Bureau of Population Health and Community Services, Maternal and Child Health Section Administrator and Title V Director, Concord, New Hampshire. May 2014-present. Administers all aspects of New Hampshire's Title V/MCH program to assure access to statewide health care services for pregnant women, children and adolescents. Oversees 15 state appropriations in excess of \$10 million; responsible for the administration of 15 federal grants; over 60 contracts and 19 staff. Manage a complex array of services including: perinatal health, child health, family planning, newborn hearing screening, newborn metabolic screening, Sudden Unexpected Infant Death Syndrome (SUID) program, maternal mortality review panel, home visiting, injury prevention and adolescent health. Oversees a coordinated set of data initiatives including newborn screening data linkages; Early Hearing Detection Intervention data linkages; perinatal client data form linkage to vital records (PCDF) and the development of linked database of home visiting records.

NEW HAMPSHIRE DEPARTMENT OF HEALTH AND HUMAN SERVICES, Division of Public Health Services, Maternal and Child Health Section, Injury Prevention and Adolescent Health Program Manager, Concord, New Hampshire. April 2003 – May 2014. Manages the Injury Prevention and Adolescent Health programs for the state. Supervises staff within each of the programs. Continues all of the previous functions listed below.

NEW HAMPSHIRE DEPARTMENT OF HEALTH AND HUMAN SERVICES, Division of Public Health Services, Maternal and Child Health Section, Injury Prevention Program, Concord, New Hampshire. Health Promotion Advisor. March 1998-April 2003. Acts as an advocate for injury prevention in the state. Facilitates statewide coalitions on older adult falls, teen motor vehicle issues, sexual violence and the Injury Prevention Advisory Council. Collaborates with other agencies on additional injury topics. Seeks out, writes, and manages grant funding for the entire Injury Prevention Program. Is a member of the New Hampshire SAFE KIDS advisory committee and the Suicide Prevention Council Leadership Team. Acts as liaison and consultant to all health agencies receiving Title V funding on injury prevention issues. Certified Child Passenger Safety Technician.

NEW HAMPSHIRE DEPARTMENT OF HEALTH AND HUMAN SERVICES, Office of Community and Public Health, Division of Family and Community Health, Bureau of Maternal and Child Health, Family Planning Program, Concord, New Hampshire. Health Promotion Advisor. March 1998 - December 2000. Coordinated all family planning community education in the state. Acted as a consultant, liaison, and facilitator for the family planning community health educators located in all Title X agencies. Co facilitated state Women's Health/Family Planning Advisory Committee. Acted as liaison between Region 1 Family Planning Training Center and the state.

CAPITAL REGION FAMILY HEALTH CENTER, Concord Hospital, Concord, New Hampshire. Community Educator/Counselor. November 1992 - March 1998. Coordinated HIV testing and counseling site. Counseled clients regarding HIV/AIDS and HIV antibody test. Conducted outreach sexuality education to members of the community by way of community organizations and schools. Maintained and updated all educational resource materials utilized.

MEDICAL COLLEGE OF PENNSYLVANIA, Department of Obstetrics and Gynecology and the Department of Pediatrics. Adolescent Outreach Counselor/Educator. 1988 - August 1992. Conducted outreach sexuality education and counseling to adolescents in the surrounding community by way of community organizations and schools. Recruited and trained adolescent peer educators. Educated and counseled patients on sexuality issues in adolescent clinics within the hospital. Acted as consultant to hospital staff on adolescent sexuality issues. Coordinated public relations program for the adolescent clinics.

CHERRY HILL WOMEN'S CENTER, Cherry Hill, New Jersey. Counselor/Health Educator. 1987-1988. Educated and counseled women in their decision regarding pregnancy. Provided information on reproductive health issues. Counseled female patients and their escorts on sexuality issues.

MEDICAL SCHOOL OF THE UNIVERSITY OF PENNSYLVANIA, Department of Psychiatry, Obesity Research Group. Research and Counseling Associate. 1985-1987. Conducted and collaborated in research examining the metabolic and behavioral effects of weight loss and regain in both humans and laboratory animals. Counseled adolescents and their families in a behavior modification weight loss program. Collaborated in counseling and research on the nature and methods of treating bulimia and anorexia nervosa.

PROFESSIONAL AFFILIATIONS

American Public Health Association
Safe States Alliance (State Contact)
New Hampshire Public Health Association
Association of Maternal and Child Health Programs

Boards

Board Member of Media Power Youth, Manchester, New Hampshire

Paulette Valliere – Program Planner III – SSDI Project Director

PROFESSIONAL EXPERIENCE

SSDI Project Director / PRAMS Project Director **2014 - present**

Maternal & Child Health Section, Division of Public Health Services
NH Department of Health and Human Services, Concord NH

Oversight and coordination of the State Systems Development Initiative (SSDI) project:

- Manage the creation and use of a secure and confidential system linking applicable maternal and child health data.
- Monitor use of MCH data by other programs to promote future linkages.
- Act as liaison with MCH Epidemiologist preparing analyses and reports of statewide prenatal and child health data.
- Supervision of PRAMS project staff; analysis of PRAMS yearly data sets and production of data books to inform stakeholders, policy makers, and the general public.
- Supervision of new Zika/Birth Conditions project; collaboration on writing administrative rules to govern implementation of the project activities.

PRAMS Project Coordinator **2012 – 2014**

Maternal & Child Health Section, Division of Public Health Services
NH Department of Health and Human Services, Concord NH

Oversight and coordination of all aspects of the NH Pregnancy Risk Assessment Monitoring System project (PRAMS).

- Supervised PRAMS staff and conducted/oversaw data system and human subject training
- Coordinated program activities with other Maternal and Child Health staff and Division of Public Health Services staff and with other agencies and organizations
- Facilitated the PRAMS Steering Committee
- Developed and revised the PRAMS protocol's state-specific sections and participated in the development of the NH questionnaire in collaboration with the PRAMS Project Director and the CDC
- Oversaw all data collection procedures, including mail survey and telephone interviews
- Conducted telephone interviews, asking questions of a sensitive nature; monitored telephone interviews conducted by other PRAMS staff for quality assurance
- Oversaw all data management procedures

Creator / Managing Director / Webmaster **1999 – 2012**

Saga Tours, Bamako, Mali, West Africa

Tourism for Development initiative: Created tour agency; trained and supervised local staff to meet foreign client needs and expectations; itinerary planning and budgeting; client communications and reservations; created/maintained client database; tour cost calculations, pricing and billing; produced brochures for commercial distribution at trade shows; created and maintained website.

Associate Country Director / Community Health Project Director **1994 – 1999**

Peace Corps Gabon, West Africa

Created and managed the Community Health Project, focused on maternal/child health and nutrition, reproductive health, HIV/AIDS prevention through peer education and social marketing.

- Situation analysis; wrote project plan, personnel's scope of work, training design and yearly budgets of approximately \$480,000 USD
- Supervised project personnel; data collection; monitored and evaluated project activities; made adjustments as needed to keep the project accomplishments pertinent, on-target and sustainable
- Wrote training design and conducted yearly in-service workshops for 25 staff and 25 local community counterparts
- Managed rental database for approximately 100 Peace Corps volunteers and staff
- Served as PC liaison to Gabon's National AIDS Program (PNLS)
- Supervised personnel in the field during Ebola outbreak
- Served as Acting Director in the Director's absences
- Recruited local health professional to assume project manager responsibilities upon end of contract

Epidemiologist / Project Officer

1992 – 1993

Louisiana Office of Public Health, New Orleans, LA

Managed all aspects of a case-control study of food-borne disease for the Centers for Disease control and Prevention, to measure the relative and attributable risks of various foods for salmonella, campylobacter and vibrio infections [Crayfish: A newly recognized vehicle for vibrio infections; N.H.Bean et al, *Epidemiology and Infection* (1998), 121, 269-273].

- Managed active surveillance system in 19 counties (population 2.1 million residents)
- Monitored on-going data acquisition; ensured that epidemiologic issues of precision, reliability and validity were addressed; implemented strategies to correct and prevent bias
- Data-entry; use of statistical programs (EpiInfo, SPSS) to analyze data (contingency tables, matched analysis, logistic regression)
- Planned and organized work flow; supervised field epidemiologists and project secretary
- Tracked salaries, supplies and operational expenses
- Compiled data; wrote quarterly reports and final project report summarizing findings and conclusions; presented study findings at staff conference
- Collaborated on the creation of survey research questionnaire on hepatitis risk factors, STD clinic utilization and immunization

EDUCATION

Master of Public Health in Epidemiology

Tulane School of Public Health & Tropical Medicine, New Orleans, LA

Bachelor of Science in Biochemistry

University of New Hampshire, Durham, NH

Bachelor of Arts in Psychology

University of New Hampshire, Durham NH

David J. Laflamme, PhD, MPH

Research Assistant Professor & State Maternal and Child Health Epidemiologist

EDUCATION/TRAINING

Plymouth State College, Plymouth, NH

B.S. 1985-1989 Health Education

Tulane University School of Public Health & Tropical Medicine, New Orleans, LA

M.P.H. 1994-1997 Public Health

Johns Hopkins Bloomberg School of Public Health, Baltimore, MD

Ph.D. 1998-2003 Public Health

Personal Statement

The purpose of SSDI is to develop, enhance and expand State Title V MCH data capacity for its needs assessment and performance measure reporting in the Title V MCH Block Grant program. Improving data capacity allows for data-driven decision making in MCH programs, including assessment, planning, implementation, and evaluation. The development and utilization of linked information systems between key MCH datasets is a vital activity in building data capacity and advancing the utilization of the core and minimum data sets.

I have the expertise, leadership skills and motivation necessary to successfully carry out the proposed work. My training and experience in public health since 1989 spans a broad range of topics and skill sets. Especially relevant to this project is my tenure as the State Maternal and Child Health Epidemiologist for the NH Division of Public Health Services since 2003. In this inaugural role, I have led the advancement of the use of maternal and child health data to inform programs and policy at the state and local level in New Hampshire. I played key roles in the design, implementation, and analysis of two state-level surveys to assess the prevalence of violence against women and men. This included assuring fidelity to methods used in an earlier national survey to allow comparison to national rates, and data analysis including survey weighting. I am facile with data management through my work with several public health datasets (e.g. birth, death, discharges, all-payer claims, etc.) and have completed several data linkage projects using specialized software to develop custom algorithms. I was instrumental in securing the first NH PRAMS grant and continue to serve in the role of PRAMS PI. I participated actively in a national workgroup to develop the Core/Minimum Data Sets. In summary, I have a demonstrated record of successful and productive public health practice projects that warrant my continuation as a key leader of the SSDI project in New Hampshire.

Positions and Employment

2003 – (current) State Maternal & Child Health Epidemiologist, NH Division of Public Health

2003 – (current) Core Faculty Member, Master of Public Health Program, University of New Hampshire

2003 – (current) Research Assistant Professor, Institute for Health Policy & Practice and the Department of Health Management & Policy, UNH

2000-2003 Project Manager, Workplace Policies, Climate, and Stressors study

1999-2002 Cancer Epidemiology Fellow, NIH/NCI Training Grant

1998-2000 Senior Research Assistant, Workplace Policies, Climate and Stressors study

1998 Assistant Program Coordinator, Optima Healthcare Parish Nurse Program
1995-1997 District Sanitation Coordinator, Ilam, Nepal, U.S. Peace Corps
1989-1994 Health Educator, Corporate & Community Health Improvement Program

Other Experience and Professional Memberships

2006- Member, National Association for Public Health Statistics and Information Systems
2004- Reviewer, Maternal and Child Health Journal
2004-2007 Director, New Hampshire Public Health Association
2002- Member, New Hampshire Public Health Association
1998- Member, American Public Health Association

Honors

1989 Eta Sigma Gamma National Health Science Honorary, Life Member
2003 Phi Beta Kappa, Life Member

Selected peer-reviewed publications

1. Laflamme, D.J., McGrath, R.J. (2011) {in response to} State Sponsored Public Reporting of Hospital Quality. *Health Affairs*, 30:2.
2. Potter, S.J., Laflamme, D.J. (2011) An Assessment of State Level Sexual Assault Prevalence Estimates. *Maternal & Child Health Journal*, 15:77-86.
3. Laflamme, D.J. (2010) Preterm Births: A Better Comparison Statistic. *Health Affairs*, 29:1.
4. McGrath, R.J., Laflamme, D.J., Schwartz, A.P., Stransky, M.L., Moeschler, J.B. (2009) Factors affecting access to genetic counseling services for families with children with autism spectrum disorder, Down syndrome, and mental retardation. *Pediatrics*, 124:S443-S449.

Completed Research Support

Assessment of Central Cancer Registry Linkage with All Payers Claims Databases

Rees (PI) 3/1/10 – 8/31/12

Role: Co-investigator

Enhancing Cancer Registry Data for Comparative Effectiveness Research

Rees (PI) 3/1/10 – 8/31/12

Role: Co-investigator

Early Postpartum Breastfeeding Data Quality Laflamme (PI) 9/1/09 – 12/31/09

Role: PI

Violence Against Men Study Laflamme (PI) 6/15/07 – 2/28/09

Role: Co-PI

Violence Against Women Study Banyard (PI) 5/19/06 – 1/31/08

Role: Co-investigator

AUDREY G. KNIGHT
247 HEDGEROSE LANE
HOPKINTON, NEW HAMPSHIRE 03229
(603) 228-0192, KNIGHT03@COMCAST.NET

Education

Yale University, School of Nursing
MSN 1983

New Haven, CT

- Pediatric Nurse Practitioner Track

Northeastern University
College of Nursing
BSN, Cum Laude, 1978

Boston, MA

New Hampshire Registered Nurse License # 025674-21 (expires August 2021)

Professional experience

1986 - present New Hampshire Department of Health and Human Services

Division of Public Health Services, Bureau of Community Health Services
Maternal and Child Health Section

*Child Health Nurse Consultant/Child Health Program Manager/NH SIDS
Program Coordinator/NH Sudden Unexpected Infant Death Project
Coordinator/NH Sudden Unexpected Death in the Young Project Coordinator*

- Provides clinical consultation, education and technical assistance to contract agencies, medical professionals, and the general public in the field of child health;
- Monitors the quality assurance and delivery of health care in agencies contracted with the NH Department of Health and Human Services, Maternal and Child Health Section;
- Supervises the NH Early Hearing, Detection and Intervention Program, and the NH Newborn Screening Program;
- Participates in a variety of state-level advisory committees and inter-departmental workgroups regarding the care of low-income children.
- Coordinates a statewide system of bereavement support services, upon referral from the Office of the Chief Medical Examiner, to family members and care providers impacted by the death of an infant from Sudden Unexpected Infant Deaths (SUID).
- Provides public education and professional training on SIDS/SUID, SIDS/SUID risk reduction, and bereavement support resources.
- Project Coordinator for Centers For Disease Control (CDC) – funded Sudden Unexpected Infant Death (SUID) Registry Pilot Grant, 2010 – 2012; NH SUID Case Registry Capacity Grant, 2012 – 2015; NH Sudden Death in the Young Case Registry Project, 2014 - 2017

Audrey G. Knight, continued

1996-2005 Health First: Family Care Center, federally qualified primary care center,
Franklin, NH

Part-time Pediatric Nurse Practitioner

- Provided well child care to low income children in rural setting

1984 – 1986 Visiting Nurse Association of Franklin, Inc.
Franklin, NH

Maternal and Child Health Coordinator

- Coordinated and provided direct nursing care services at agency's state-funded Prenatal and Child Health Programs, which offered comprehensive health care, education, and support services including home visits to low income woman and children in a rural setting
- Provided educational offerings to the community at large on a variety of topics related to prenatal and child health.

1978-1982 Children's Hospital Medical Center
Boston, MA

Staff/Charge Nurse; Failure To Thrive Team Nurse Consultant

- Provided direct and supervisory care on 28 bed medical unit for infants and toddlers that included intensive care-level patients.
- Served as Nurse Consultant on hospital's "Failure to Thrive" team – a grant-funded multidisciplinary hospital-wide team involved with children admitted with Failure To Thrive diagnosis, their families, and staff assigned to their direct care.

Current Committees/Membership

- NH Sudden Unexpected Infant Death Review Group Co-Chair
- NH Sudden Death in the Young Review Group Co-Chair
- NH Child Fatality Review Committee; Executive Subcommittee
- NH Autism Council, Early Screening and Diagnosis Committee
- NH Newborn Screening Program Advisory Committee
- NH Early Hearing, Detection and Intervention Program Advisory Committee
- NH Abusive Head Trauma Coalition

Awards

- 2013 Recipient of the State of New Hampshire Attorney General's Task Force on Child Abuse and Neglect's Dr. Roger M. Fossum Award for Outstanding Dedication and Service on Behalf of New Hampshire's Children and Families
- 2013 New Hampshire Pediatric Society Public Citizen of the Year

Anne Marie Mercuri
36 Timber Lane
Gilford, NH 03246
603-387-2771

Education: University of New Hampshire – Manchester, NH (2011)

Degree: Masters of Public Health

Salem State College - Salem, MA (1995)

Degree: Bachelor of Science in Nursing

Honors: Sigma Theta Tau Honor Society

Stonehill College - North Easton, MA (1988)

Degree: Bachelor of Science in Biology

Licenses & Certifications:

New Hampshire Registered Nurse

American Heart Association, Basic Life Support Instructor

Lean, Green Belt Certification

Work Experience:

Dec. 2015- Present **New Hampshire, Department of Health & Human Services- Concord, NH
Quality Assurance/Quality Improvement Nurse Consultant, Maternal & Child
Section**

- Provides clinical consultation, education and technical assistance to agencies, medical professionals and the general public in the field of health care quality assurance and performance measurement.
- Monitors the quality and delivery of clinical care and administrative systems in community agencies which contract to provide services with New Hampshire Division of Public Health Services, Bureau of Population Health and Community Services, Maternal and Child Health (MCH) Section.
- Develops, coordinates and implements an annual quality assurance program for MCH and Family Planning contracted agencies providing direct care programs, including making site visits, performing chart audits, and reviewing statistical forms, proposals and required reports to ensure program excellence and agency compliance with state and federal guidelines and regulations.
- Serves as the clinical Quality Assurance liaison between the MCH Section and other state and federal offices, departments, agencies, committees and the contract agencies to enhance coordination of efforts on issues related to performance measurement and quality assurance.
- Participant: Department of Public Health Quality Council

July 2006- Dec. 2015 **Central New Hampshire VNA & Hospice- Laconia, NH**

Young Family Program Manager

- Acted as a bridge between senior leadership and the front lines to turn high-level objectives into action at the department or unit level.
- Directed the provision of Maternal-Child Health services provided under Young Family Program (YFP) & Supervises YFP staff (RN & paraprofessionals).
- Collected program data and provides written summary to the Executive Director and funders per grant requirements.
- Continuous Quality Improvement (CQI) Committee member: Developed & Implemented MCH CQI projects: Sudden Unexpected Infant Death Education, Maternal Depression

Screening, Smoking Cessation, and Lead testing for children.

- Collaborated with community agencies to promote public health activities and MCH services including: Home Visiting New Hampshire, Healthy Families America, School Flu Clinics, Community Action Program Health Advisory Board member.
- Provided staff education: American Health Association CPR, Coaching Approach to Communication.
- Participant Middle Management team known as Clinical Council: Administrator on Call, Staffing & resource utilization, Reviewed agency policy & procedures.
- Pediatric Workgroup participant: VNA Health Systems of Northern New England (alliance of six community based not-for-profit home health agencies providing quality home health, hospice and other community services). Activities include: Planning & Coordinating Pediatric Continuing Education for member agency staff, Establishing pediatric competencies consistent with evidence based interventions and collaborating with DHMC to improve pediatric discharge and transition to home.

Feb. 2004- **Central New Hampshire VNA & Hospice- Laconia, NH**

Dec. 2015 **Maternal-Child Health Nurse**

- Immunization Coordinator: maintained proper vaccine storage, scheduled and vaccinated children and agency staff. Coordinated School-Based Flu Clinics.
- Provided Family Centered Care and developed plans of care addressing the medical, developmental and the social needs of the children and their family.
- Performed clinical tasks related to maternal postpartum care, newborn care, and pediatric homecare.

April 2003- **Visiting Nurse Association of Franklin- Franklin, NH**

Feb. 2004 **Maternal-Child Health Nurse**

- Provided nursing care and assessment to pediatric clients in their own home.
- Provided perinatal care, lactation support and education to women and their infants.

July 2003- **Lakes Region General Hospital- Laconia, NH**

April 2007 **Childbirth Educator**

- Certified Childbirth Educator and Lactation Counselor.

July 1999- **Lakes Region General Hospital- Laconia, NH**

July 2003 **Registered Nurse- Family Birthplace**

- Provided Antenatal, Labor and delivery, Post-partum and neo-natal nursing care.
- Served as a Resource Nurse to supervise day to day shift activities.
- Served as a preceptor to supervise and support the onboarding of new nurses.
- Participated in unit based and hospital wide committees: Professional practice, Staff education, Medication safety, code committee.
- Served as a Mock code educator: Educated staff members in emergency response measures for cardiac emergencies.

April 1998 - **Speare Memorial Hospital - Plymouth, NH**

July 1999 **Registered Nurse – Obstetrical Unit**

- Provided antepartum, intrapartum, postpartum and neonatal nursing care.

June 1995 - **Lakes Region General Hospital – Laconia, NH**

July 1999 **Registered Nurse – Cardiac Telemetry Unit**

- Provided nursing care for cardiac patients including Telemetry / Dysrhythmia monitoring.
- Participated in Professional Practice Committee to ensure best practices for patient care.

JoAnne Miles-Holmes, MPH

general public to improve understanding of injury trends and issues for use in organizational budgets, planning, and program monitoring.

Planning Analyst-Data Systems at New Hampshire DHHS-DPHS, HSDM

Supervisors: Karla Armenti and Thomas Lambert August 2006 – April 2012

Supported several programs by performing data analysis, applying epidemiological statistics to data, report writing and editing, and data quality assurance

Adjunct Faculty-Massage Therapy and Medical Assisting at McIntosh College

Supervisor: Anne Tiemann, RN December 2003 - July 2006

Classes taught for Massage Therapy Program include: anatomy & physiology, kinesiology lecture & lab, massage lecture & lab, neuromuscular therapy lecture & lab, related modalities and adjunct therapies, health & hygiene.

Classes taught for Medical Assistant Program: anatomy & physiology, medical terminology, medical records management, biostatistics.

Project Coordinator and Research Assistant at University of New Hampshire

Supervisor: Dr. Raelene Shippee-Rice May 2000 - September 2003

Research Assistant at New Hampshire Hospital Association, Internship

Preceptor: Kathy Bizarro May 2001 - August 2001

Clerical Representative at Wentworth Douglass Hospital, Internship

Preceptor: Sheila Woolley, VP Nursing Administration May 2000 - September 2000

Licensed Massage Therapist and Business Owner

Miles Muscular Therapy October 1993 - February 1998

ADDITIONAL TRAINING

MS Access Database Workshop	June 2000
SAS Online Training	Levels I, II and III 2006
MS Excel Statistical Analysis	December 2007
NH-DHHS Supervisor Certificate Program	December 2012
Introduction to ArcGIS	October 2013
LEAN Process Improvement Facilitator	April 2014
Continuous Improvement Practitioner	April 2014
Stroudwater Quality Improvement Basic Training Program	June 2016

Ann M. Collins

18 Nesenkeag Drive
Litchfield, NH 03052
(603) 440-8222
Ann.Collins@dhhs.nh.gov

Skills

Registered Nurse

- Highly skilled career professional with over 15 years practical experience in both hospital and office settings.
- Caring, compassionate, hard worker dedicated to the comfort and support of both patients and their family members. Excellent listening and problem solving skills. Eager to learn new things and share knowledge. Thrives in work environments involving collaboration with others for the well being of our patients.
- Experience in different EMR systems, managing heavy daily patient volume in both scheduled and walk in medical offices.
- Experience that ranges from newborn through elder care in both inpatient and outpatient settings, both IV and phlebotomy experience.

Experience

September 2016 - present
Perinatal Nurse Coordinator
Department of Health and Human Services
Division of Public Health Services
Maternal and Child Health Section
Concord, NH

March 2012 - August 2016
RN for Southern NH Health Systems Immediate Care
Foundation Medical Partners, Nashua, NH

September 2009 - March 2012
OB/GYN Specialty Office RN
Foundation Medical Partners, Nashua, NH

January 2007 – September 2009
Labor & Delivery/Antepartum/Postpartum Care
Southern NH Medical Center, Nashua NH

January 2005 – January 2007
Labor & Delivery/Antepartum/Postpartum Care
Elliot Hospital, Manchester, NH

2001 – January 2005
Medical/Surgical Nurse
Southern NH Medical Center, Nashua NH

Education

Rivier College, Nashua, NH - *Registered Nurse 2001*
Regis College, Weston, MA - *BA, Biology 1993*

Haley Johnston

51 Woodcrest Ct. Manchester, NH 03109
haley.johnston42@gmail.com | 207-227-1880

Personal Statement

As a public health professional, I have obtained a wealth of information about public health at a community level. I have also gained experience on chronic disease education, and program planning. In addition, I have gained knowledge in program planning for Family Planning/Title X.

Key Skills

- Ability to prioritize
- Dependable
- Works well as a team member
- Effective communication skills
- Problem solving skills
- Research skills/Data Analytics
- Computer skills: Microsoft Office Suite, SPSS, Photoshop
- Certified in FEMA ICS-100, Local Public Health Emergency Response, NIH protecting human participants

Education

MCPHS University – Boston, MA Graduation: September 1, 2016
Masters of Public Health (MPH) – Community Health Concentration GPA: 3.8

The University of Maine – Orono, ME Graduation: May 2014
Bachelors of Arts Psychology – Developmental Concentration GPA: 3.0
Minor: Child Development and Family Relations

Clinical Experience

Eye Center Northeast – Bangor, ME Dates: 6/11 – 1/14
Optometric Technician/Medical Receptionist

- Patient workups for optometrist including medical history and patient complaints
- Patient Tests- Eye Chart, Visual Field and Optical Coherence Tomography (OCT)

Work Experience

NH Department of Health & Human Services – Concord, NH
Dates: January 2017-current
Family Planning Program Assistant

- Assist with the NH Title X Family Planning Program
- Administrative duties
- Assist with Personal Responsibility Education Program (PREP)
- Partnered with staff on program contracts

Haley Johnston

51 Woodcrest Ct. Manchester, NH 03109
haley.johnston42@gmail.com | 207-227-1880

Haley J Photography – Manchester, NH Dates: June 2014-current
Owner/Lead Photographer

- Schedule and shoot photo sessions and weddings
- Organize and publish social media posts
- Write weekly blog posts
- Create wedding day timelines for wedding clients

Breathe New Hampshire – Manchester, NH Dates: May 2016-August 2016
Intern

- Assisted the program director and COPD program manager on the current NH COPD Plan
- Created COPD toolkits for primary care providers/public health networks
- Assisted in ideas for improving the youth anti-tobacco program
- Imported donations into Rasier's Edge

L.L.Bean – North Hampton, NH Dates: 11/14 – 5/16
Sales Representative

- Customer service
- Cashier
- Stocked merchandise

The Daily Maine Campus – Orono, ME Dates: 10/10 – 8/14
Photo Editor

- Took photos that are published in the newspaper and web
- Edited photos for printing deadlines
- Organized and managed a team of photographers

University of Maine Psychology Lab – Dr. Sandra Sigmon Dates: 09/13-5/14

- Women's health focused lab
- Imported data into SPSS
- Ran human participants in the lab
- Worked on independent tasks

The City of Presque Isle – Recreation Center Dates: 06/06-01/11

- Lifeguard
- Water Safety Instructor
- Taught swimming lessons to children ages 0-16 years old
- Supervised open swimming and bathhouse

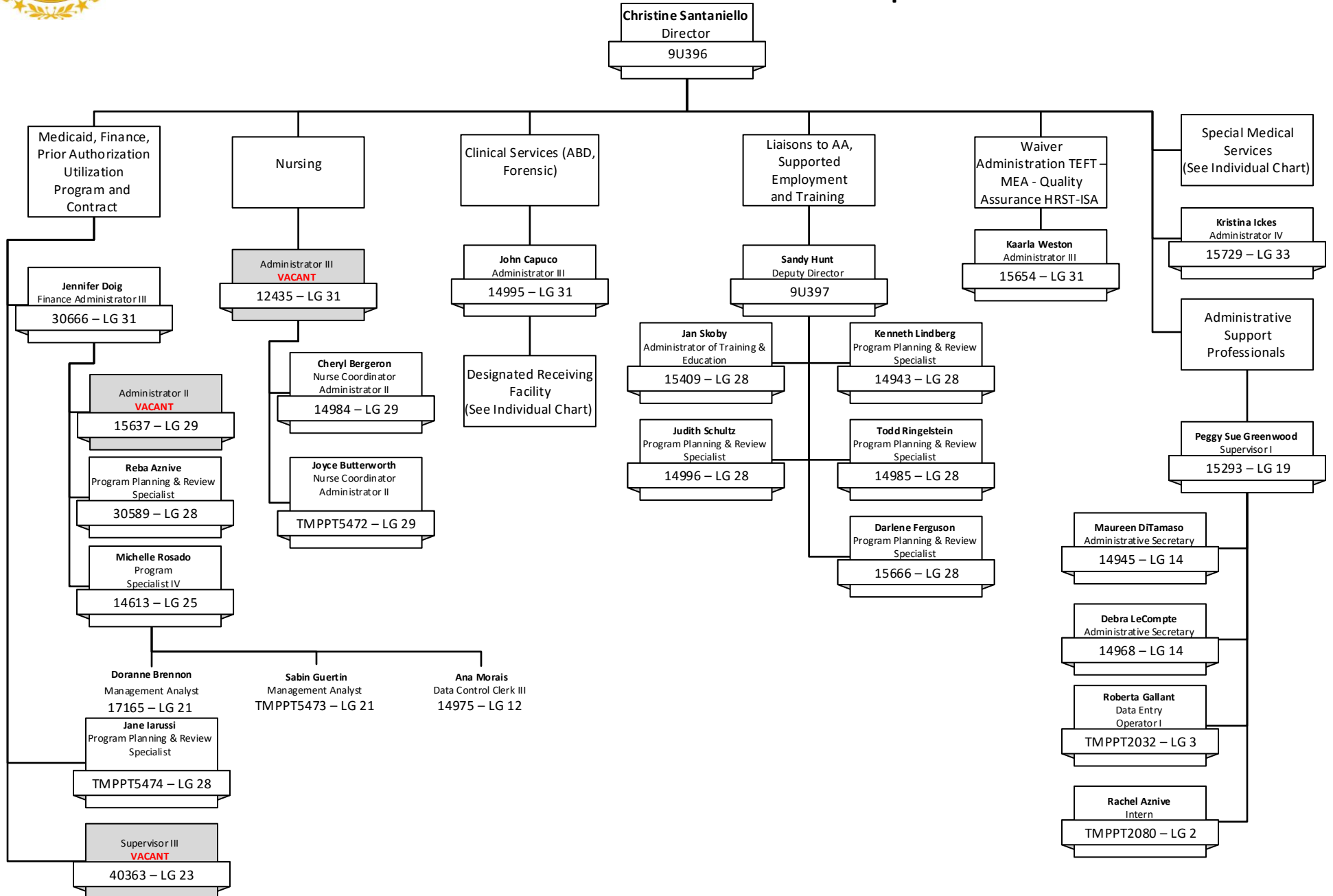
Volunteer Experience

Green Campus Initiative – University of Maine

- Eco-Representative (08/10-1/11)
- Recycling Manager (2/11-5/11)
- Created ways for students and faculty to recognize how important recycling is and to encourage involvement of recycling activities.

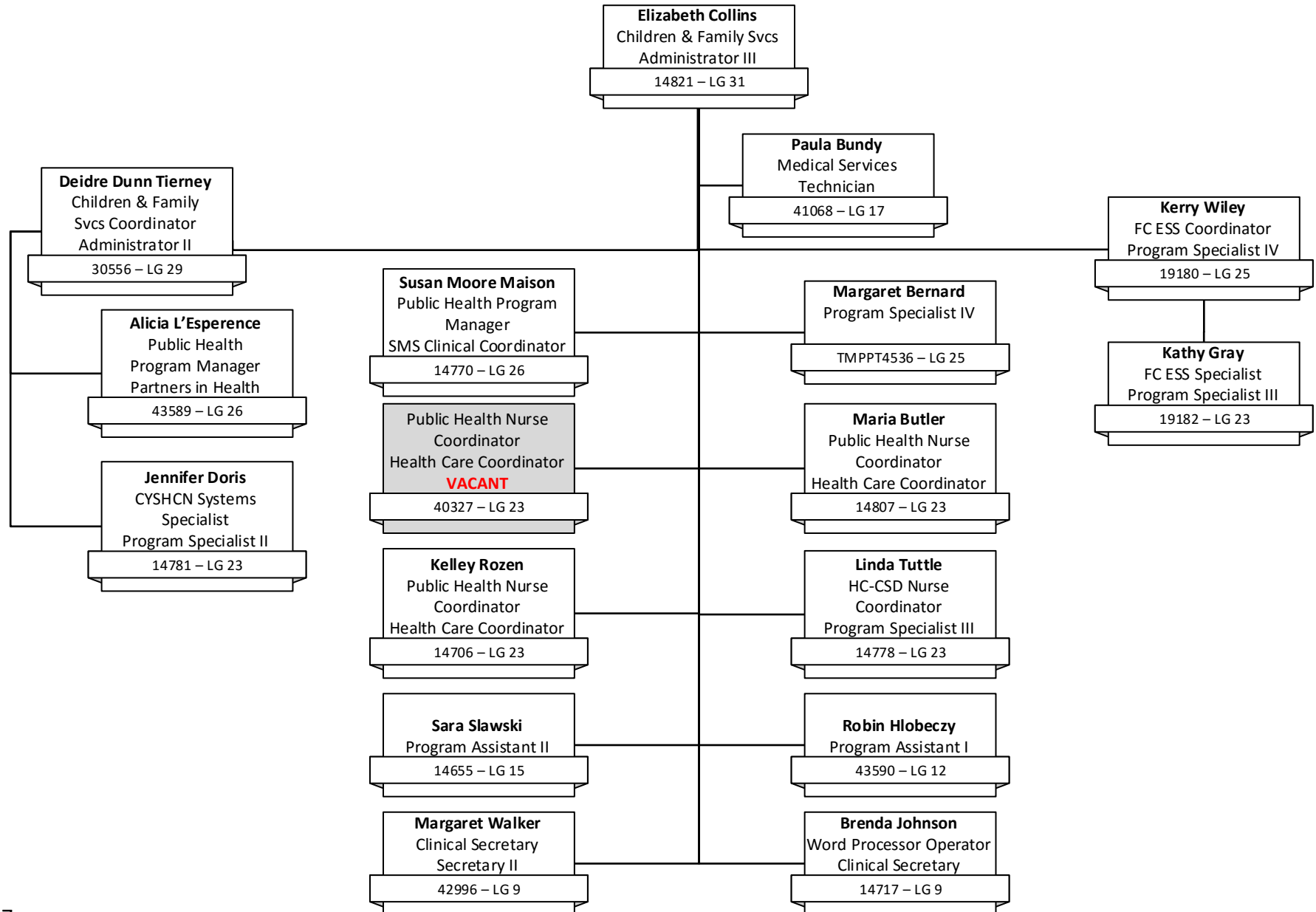


NH Department of Health and Human Services Office of Medicaid Services - Developmental Services





NH Department of Health and Human Services Office of Medicaid Services - Developmental Services Special Medical Services



Elizabeth Collins, RN-BC, MS, Administrator III, Title V CYSHCN Director. Ms. Collins has been the CYSHCN Director for 10+ years and has completed the NH LEND program and the Maternal Child Health - Public Health Leadership Institute (MCH-PHLI). Prior to becoming the CYSHCN Director she had over 20 years working with vulnerable populations in direct care and is ANCC certified in Psychiatric Mental Health Nursing. Ms. Collins holds a Master of Science Degree in Nursing Leadership from the University of New Hampshire.

Deirdre Dunn, MS, is an Administrator II with Special Medical Services. She oversees the activities related to family support, early childhood systems and statewide collaboration. She had previously held the position as Early Childhood Special Projects Coordinator in MCH managing Home Visiting, Early Childhood Comprehensive Systems, Healthy Child Care NH and other early childhood projects. Ms. Dunn has a MS in Early Childhood Education with a focus on Leadership and Policy, from Wheelock College and over 20 years of experience in community based early childhood programs.

Susan Moore, RN, BS is the Clinical Program Manager at Special Medical Services. She supervises the Health Care Coordinator and Neuromotor & Complex Care Programs and is liaison to the Child Development Clinic, and Nutrition and Feeding & Swallowing Programs. . Previously, she has served in the capacity of clinical coordinator for numerous programs within Special Medical Services, having started her career within the state of NH as the Newborn Screening Program Coordinator. She is presently enrolled in the NH-ME LEND program. Ms. Moore holds a Bachelor of Science degree in Health Planning & Policy from Granite State College.